

PUBLIC LAND SURVEY MONUMENT RECORD

TYPE OF MONUMENT: HARRISON (BROKEN-TOP)
 ADAMS COUNTY COORDINATES, NAD 83 (2007)

N. 175352.653

E. 578568.023

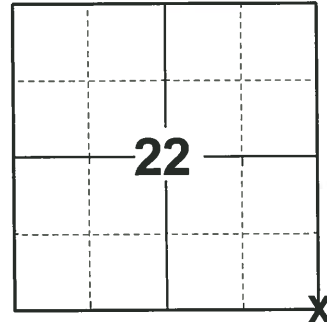
ELEVATION- - - - - DATUM - - - - -

FIELD WORK DATE: 10/01/2020

BASIS FOR MONUMENT LOCATION

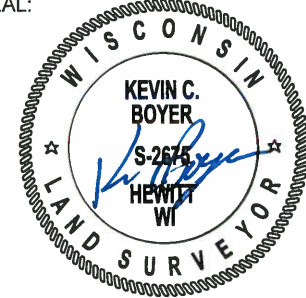
1976 - PLS 1103 RAN EDM/TRANSIT TRAVERSE AROUND SECTIONS 27 AND 34, AND PARTS OF SECTION 26 AND 35 TO DETERMINE SEARCH AREAS FOR INVESTIGATION. EXCAVATION YIELDED NO EVIDENCE OF THE ORIGINAL CORNER OR ANY REMONUMENTATION. RELOCATED CORNER BY DOUBLING OVER LINE BETWEEN THE NORTHWEST CORNER AND THE NORTH QUARTER CORNER OF SECTION 27.

2020 - PLS 2675 FOUND HARRISON (BROKEN-TOP) 6"± BELOW THE ROAD SURFACE AND 3 TIES (NORTH 2 HAVE BEEN DISTURBED BUT BASE OF IRON STILL GOOD AND SW TIE IS UNDER ASPHALT "METAL LOCATOR SOUNDED") THE MONUMENT AGREES WITH THE BASE LOCATION OF THE NORTHERLY IRONS AND THE "METAL LOCATOR SOUND" TO THE SW. ACCEPTED THE HARRISON (BROKEN-TOP) AS THE CORNER LOCATION. SET 4 NEW TIES AND MEASURED TO THE EXISTING TIES.



LOCATION
 (INDICATE CORNER BY "X")

SEAL:



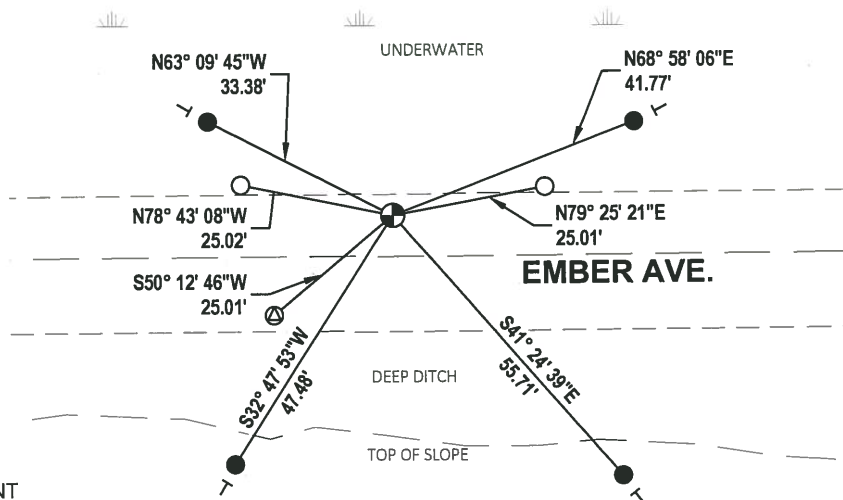
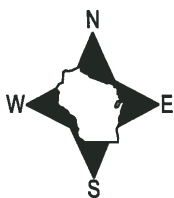
DATA SHOWN HERE ON THIS TIE SHEET IS CORRECT AND COMPLETE TO THE BEST OF MY KNOWLEDGE AND BELIEF.

PROFESSIONAL LAND SURVEYOR

DATE 11/3/2020

- TIE SKETCH

NOTE: THE CORNER LANDS 6.6'± NORTH OF EMBER AVE. CENTERLINE.



- SET 3/4" x 18" IRON REBAR, 1.50#/FT
- FOUND 3/4" IRON ROD
- ⊕ FOUND HARRISON (BROKEN-TOP) MONUMENT
- VINYL "T" POST
- ⊗ FOUND "METAL LOCATOR SOUND"

ADAMS COUNTY

Survey Monument Record

TYPE OF MONUMENT: Harrison Monument

STATE PLANE COORDINATES: N _____

E _____

ELEVATION — M.S.L. DATUM: _____

THETA ANGLE: _____

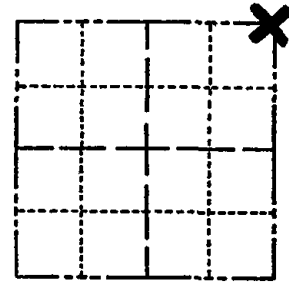
FIELD BOOK: 37 PAGE 57

CORNER NO. 1059

SECTION 27

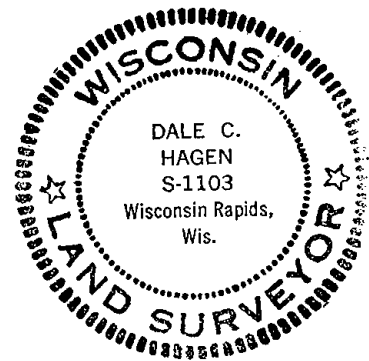
TOWN 16

RANGE 7



LOCATION (Indicated by 'X')

SEAL:



BASIS FOR MONUMENT LOCATION

(Use reverse side if necessary)

Show info such as: History of corner, with reference to Vol. and pg. dates, surveyor; exact description of monument replaced; if location computed, by taped or EDM traverse; landowner remarks, etc.

Ran EDM/transit traverse around Sections 27 and 34, and parts of Section 26 and 35 to determine search areas for investigation.

Excavation yielded no evidence of the original corner or any remonumentation.

Relocated corner by doubling over line between the Northwest corner and the North Quarter corner of Section 27.

CORNER	O.K.	3-28-77	GR-SS
"	"	3-22-82	"
Bottom	"	12-9-86	GR-SS
"	"	12-26-91	12' GR
"	"	12-6-96	SS
"	"	1-02-02	Mh

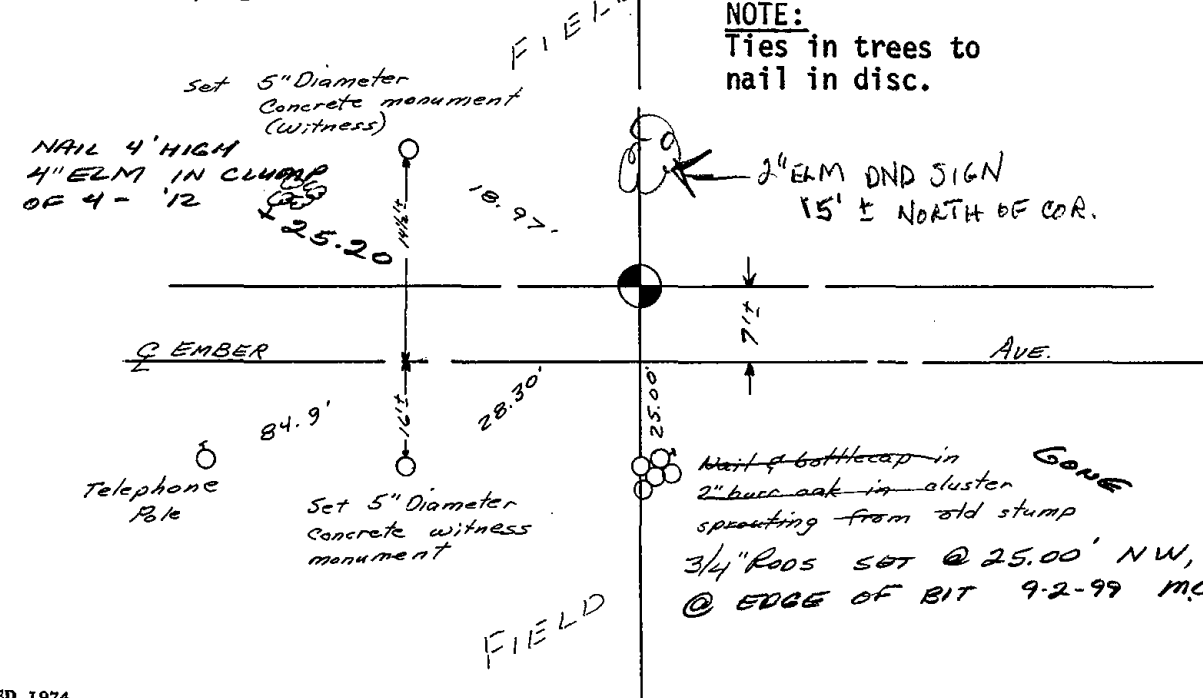
CERTIFIED CORRECT:

Dale C. Hagen
Registered Land Surveyor

DATE: 7-7-76

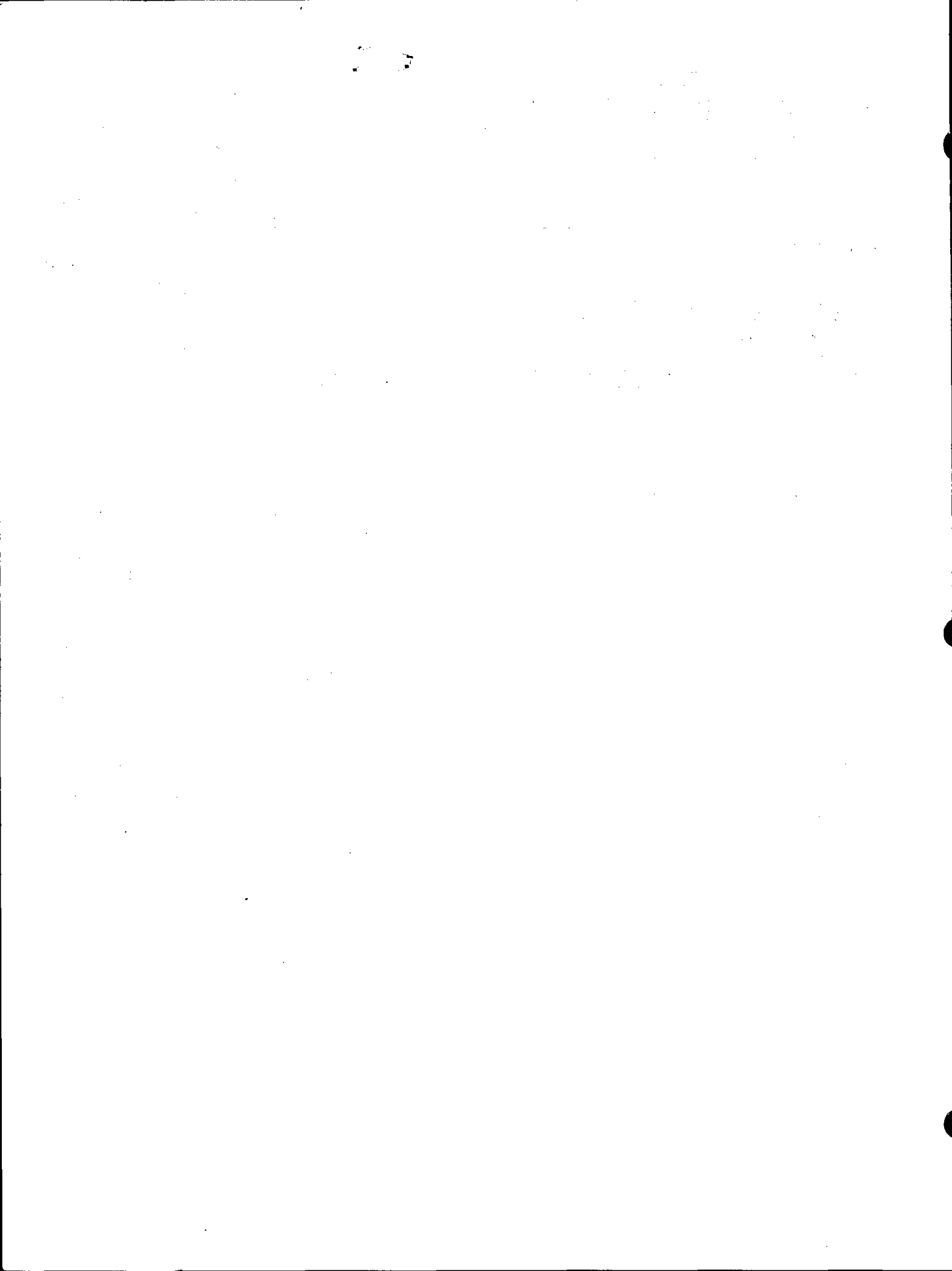
TIE SKETCH SEE ATTACHED SHEET, MC & BF, 9-2-99

OK, 5-15-07-JG
(Show at least four ties) 1-18-12 IN NEW TIE MS FIELD



NOTE:
Ties in trees to nail in disc.





JAMS COUNTY

Survey Monument Record

CORNER NO. 1059
 SECTION 27
 TOWN 16
 RANGE 7

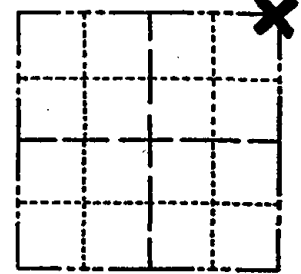
TYPE OF MONUMENT: Harrison Monument *top broken off*

STATE PLANE COORDINATES: N _____
 E _____

ELEVATION — M.S.L. DATUM: _____

THETA ANGLE: _____

FIELD BOOK: 37 PAGE 57



LOCATION
(Indicated by 'X')

SEAL:

BASIS FOR MONUMENT LOCATION

(Use reverse side if necessary)

Show info such as: History of corner, with reference to Vol. and pg, dates, surveyor; exact description of monument replaced; if location computed, by taped or EDM traverse; landowner remarks, etc.

Ran EDM/transit traverse around Sections 27 and 34, and parts of Section 26 and 35 to determine search areas for investigation.

Excavation yielded no evidence of the original corner or any remonumentation.

Relocated corner by doubling over line between the Northwest corner and the North Quarter corner of Section 27.



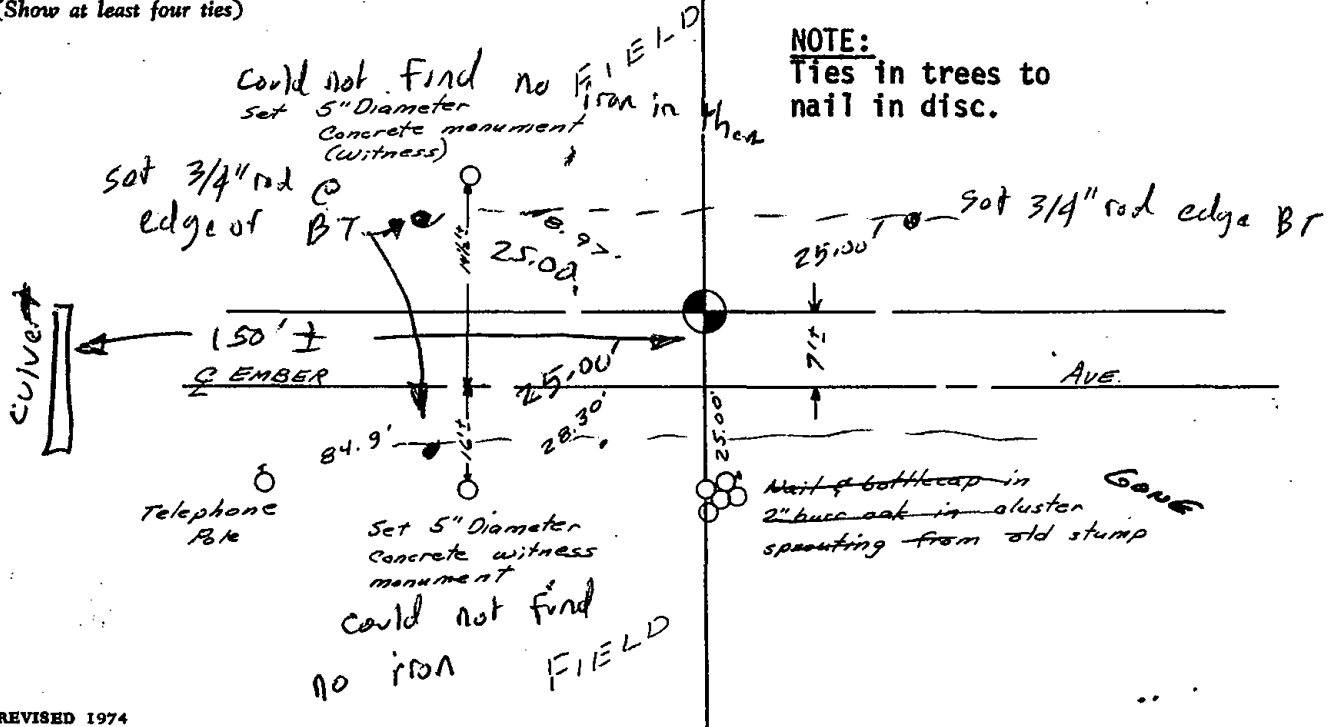
CORNER	O.K.	3-28-77	GR-SS
"	"	3-22-82	"
Bottom	"	12-9-86	GR-SS
"	"	12-26-91	1/2' GR
"	"	12-6-96	SS

CERTIFIED CORRECT:

Dale C. Hagen
 Registered Land Surveyor
 DATE: 7-7-76

TIE SKETCH *New Ties 9-2-99 - MC + BF*

(Show at least four ties)



ADAMS COUNTY

Survey Monument Record

TYPE OF MONUMENT: Harrison Monument

STATE PLANE COORDINATES: N _____ E _____

ELEVATION — M.S.L. DATUM: _____

THETA ANGLE: _____

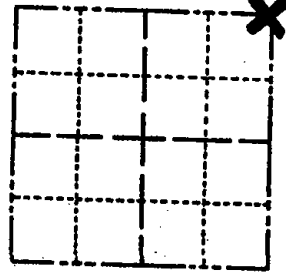
FIELD BOOK: 37 PAGE 57

CORNER NO. 1059

SECTION 27

TOWN 16

RANGE 7



LOCATION (Indicated by 'X')

SEAL:

BASIS FOR MONUMENT LOCATION

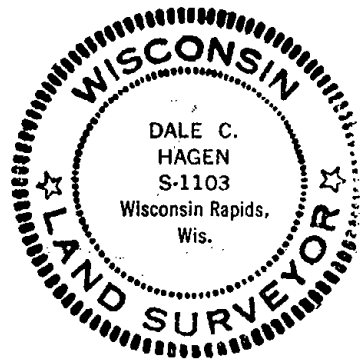
(Use reverse side if necessary)

Show info such as: History of corner, with reference to Vol. and pg. dates, surveyor; exact description of monument replaced; if location computed, by taped or EDM traverse; landowner remarks, etc.

Ran EDM/transit traverse around Sections 27 and 34, and parts of Section 26 and 35 to determine search areas for investigation.

Excavation yielded no evidence of the original corner or any remonumentation.

Relocated corner by doubling over line between the Northwest corner and the North Quarter corner of Section 27.



CERTIFIED CORRECT:

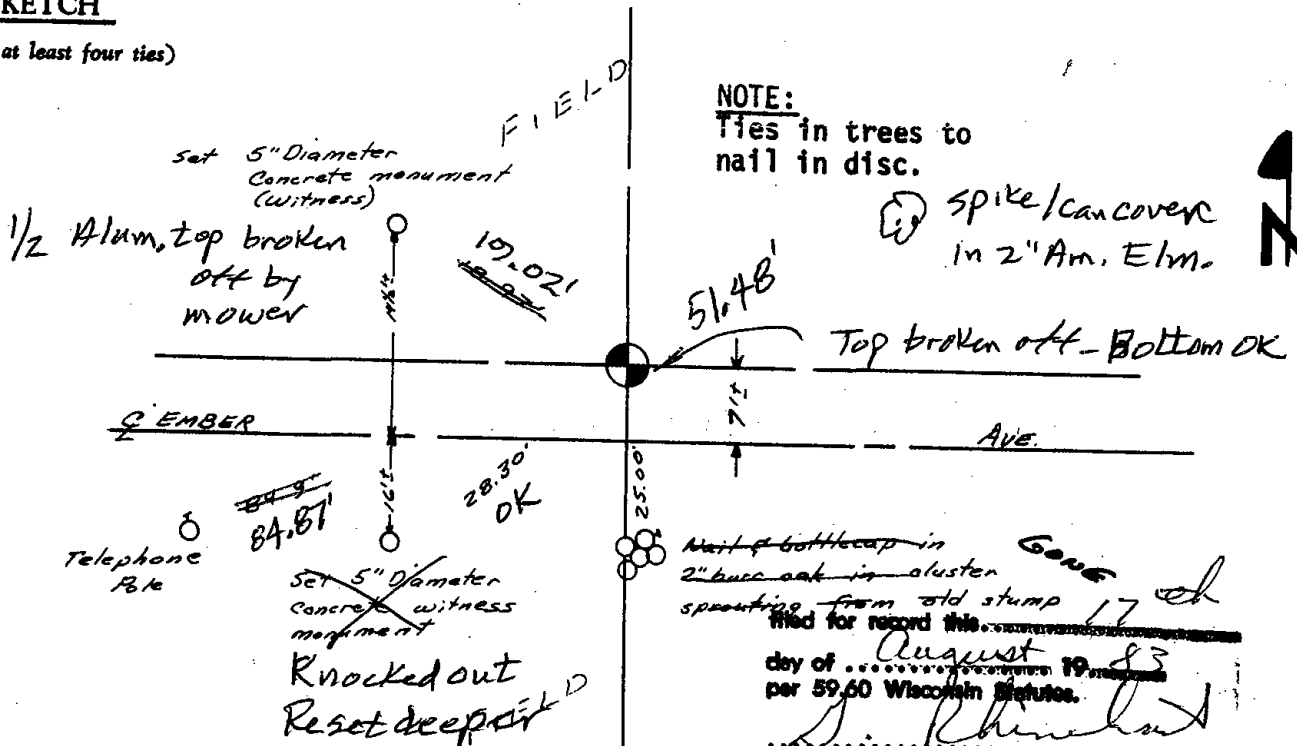
Dale C. Hagen Registered Land Surveyor

DATE: 7-7-76

CORNER OK 3 1877 GR 55
" " 3-22-82
June 14 '83 Ken Carlson

TIE SKETCH

(Show at least four ties)



NOTE: Ties in trees to nail in disc.

spike/can cover in 2" Am. Elm.

Top broken off - Bottom OK

Nail & bottlecap in 2" bucc oak in cluster sprouting from old stump filed for record this

day of August 19 83 per 59.60 Wisconsin Statutes.

ADAMS COUNTY SURVEYOR



1



Faint, illegible text at the bottom left of the page.