

24  
SECTION

16  
TOWN

07  
RANGE

# ADAMS COUNTY

COUNTY CORNER NO: 92

ROMPORTOL ID: 41607240020

## PUBLIC LAND SURVEY MONUMENT RECORD

TYPE OF MONUMENT: HARRISON  
ADAMS COUNTY COORDINATES, NAD 83 (2007)

N. 175378.698

E. 586456.926

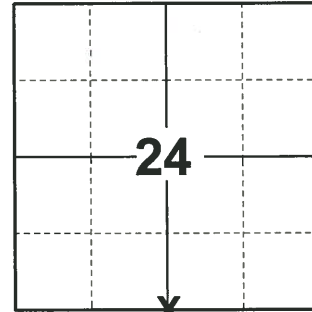
ELEVATION-      DATUM     

FIELD WORK DATE: 09/30/2020

### BASIS FOR MONUMENT LOCATION

1976 - PS 1478 SET MONUMENT EQUIDISTANT AND ON LINE BETWEEN ADJACENT SECTION CORNERS. NO EVIDENCE OF THE CORNER NOR THE B.T. BY M.C. SMITH (VOL. 1 PG. 87) WERE FOUND DURING EXCAVATION WITH BACKHOE AT THIS POINT.

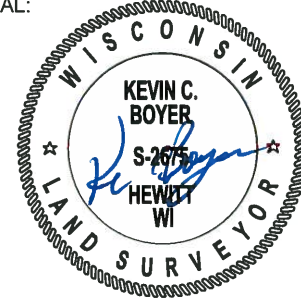
2020 - PLS 2675 FOUND HARRISON 3"± BELOW THE ROAD SURFACE AND 2 WITNESSES. THE MONUMENT AGREES WITH BOTH WITNESSES. ACCEPTED THE HARRISON AS THE CORNER LOCATION. SET 4 NEW TIES AND MEASURED TO THE EXISTING WITNESSES.



LOCATION

(INDICATE CORNER BY "X")

SEAL:



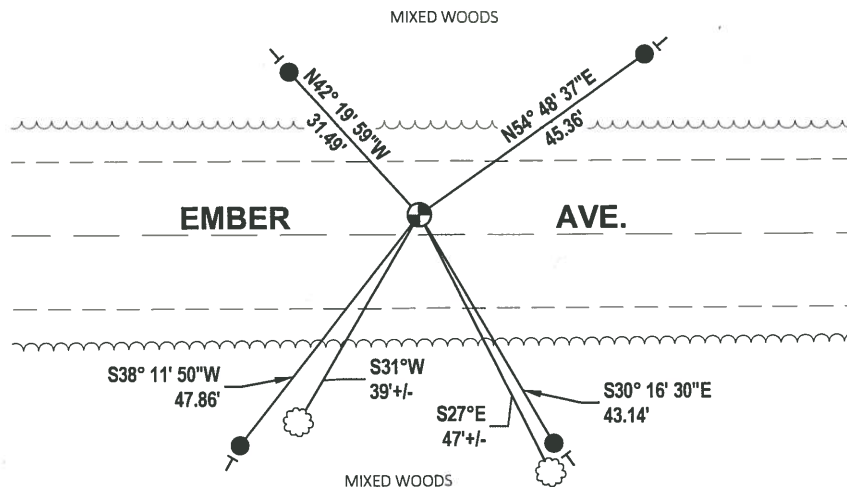
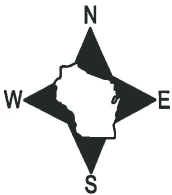
DATA SHOWN HERE ON THIS TIE SHEET IS CORRECT AND COMPLETE TO THE BEST OF MY KNOWLEDGE AND BELIEF.

PROFESSIONAL LAND SURVEYOR

DATE 11/3/2020

### - TIE SKETCH

NOTE: THE CORNER LANDS 3.3'± NORTH OF EMBER AVE. CENTERLINE.



- SET 3/4" x 18" IRON REBAR, 1.50#/FT
- ⊕ FOUND HARRISON MONUMENT
- VINYL "T" POST
- ☼ WITNESS TREE

# Government Land Corner Certificate

Adams County

TYPE OF MONUMENT: Harrison

STATE PLANE COORDINATES: N \_\_\_\_\_  
E \_\_\_\_\_

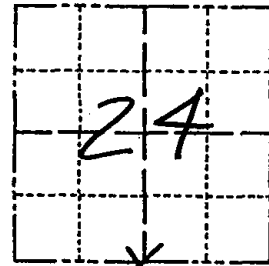
ELEVATION — M.S.L. DATUM: \_\_\_\_\_

THETA ANGLE: \_\_\_\_\_

FIELD BOOK: \_\_\_\_\_ PAGE \_\_\_\_\_

DRAWN BY: N.J.

CORNER NO. 92  
SECTION 24  
TOWN 16  
RANGE 7



LOCATION  
(Indicated by 'X')

SEAL:



## BASIS FOR MONUMENT LOCATION

Show info such as: History of corner, with reference to Vol. and pg., dates, surveyor; exact description of monument replaced; if location computed, by taped or EDM traverse; landowner remarks, etc. (Use reverse side if necessary)

Set monument equidistant and on line between adjacent section corners.

No evidence of the corner nor the B. T. by M. C. Smith (Vol. 1 pg 87) were found during excavation with backhoe at this point.

DATA SHOWN HERE ON  
CERTIFIED CORRECT:

*Gregory P. Rhinehart*  
Registered Land Surveyor

DATE: 11/5/79

## TIE SKETCH

Show at least four ties, also fence lines, roads, topo, size and type of witness trees and if off road - best way to arrive at corner.

