

## PUBLIC LAND SURVEY MONUMENT RECORD

TYPE OF MONUMENT: HARRISON (BROKEN-TOP)  
 ADAMS COUNTY COORDINATES, NAD 83 (2007)

N. 172657.304

E. 562734.714

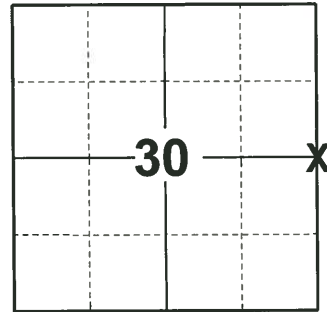
ELEVATION- \_\_\_\_\_ DATUM \_\_\_\_\_

FIELD WORK DATE: 10/06/2020

### BASIS FOR MONUMENT LOCATION

1974 - PLS 878 SET ON A STRAIGHT LINE EQUIDISTANT BETWEEN SECTION CORNERS. EXCAVATED AREA WITH BACKHOE- FOUND NOTHING.

2020 - PLS 2675 FOUND HARRISON (BROKEN-TOP) 8"± BELOW THE ROAD SURFACE AND 1 TIE. THE MONUMENT AGREES WITH THE EXISTING TIE. ACCEPTED THE HARRISON (BROKEN-TOP) AS THE CORNER LOCATION. SET 4 NEW TIES AND MEASURED TO THE EXISTING TIE.



### LOCATION

(INDICATE CORNER BY "X")

SEAL:



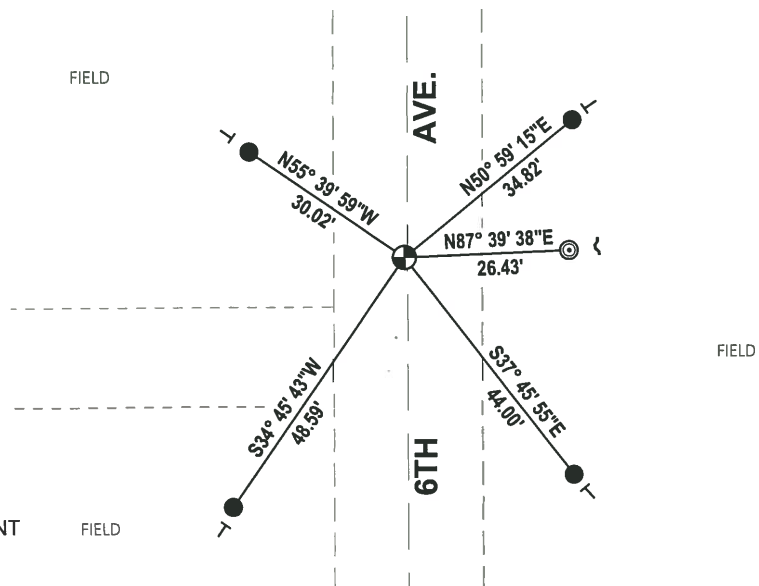
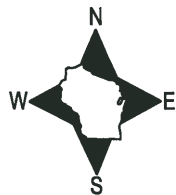
DATA SHOWN HERE ON THIS TIE SHEET IS CORRECT AND COMPLETE TO THE BEST OF MY KNOWLEDGE AND BELIEF.

PROFESSIONAL LAND SURVEYOR

DATE 11/3/2020

### TIE SKETCH

NOTE: THE CORNER LANDS .5± WEST OF 6TH AVE. CENTERLINE.



- SET 3/4" x 18" IRON REBAR, 1.50#/FT
- ⊙ FOUND 2-3/8" O.D. IRON PIPE
- ⊕ FOUND HARRISON (BROKEN-TOP) MONUMENT
- ┘ STEEL FENCE POST
- └ VINYL "T" POST

ADAMS COUNTY

Survey Monument Record

TYPE OF MONUMENT: Harrison Standard

STATE PLANE COORDINATES: N \_\_\_\_\_

E \_\_\_\_\_

ELEVATION — M.S.L. DATUM: \_\_\_\_\_

THETA ANGLE: \_\_\_\_\_

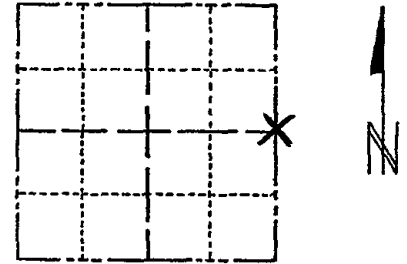
FIELD BOOK: \_\_\_\_\_ PAGE \_\_\_\_\_

CORNER NO. 382 95

SECTION 30

TOWN 16

RANGE 7



LOCATION  
(Indicated by 'X')

SEAL:



BASIS FOR MONUMENT LOCATION

(Use reverse side if necessary)

Show info such as: History of corner, with reference to Vol. and pg, dates, surveyor; exact description of monument replaced; if location computed, by taped or EDM traverse; landowner remarks, etc.

Set on a straight line equidistant between section corners. Excavated area with backhoe-found nothing.

CORNER	O.K.	2-22-77	GR-SS
"	"	3-22-82	"
"	"	12-9-86	GR-SS
"	"	12-26-91	KZ-GR
"	"	1-15-97	JG-SS
"	"	1-03-02	Mk.
	OK	1-30-07	JG-SS
	OK	01-18-12	MS

CERTIFIED CORRECT:

*Anthony B. Kiedrowski*  
Registered Land Surveyor

DATE: 6/12/74

TIE SKETCH

(Show at least four ties)

Ties are to nail and disc.

