

## PUBLIC LAND SURVEY MONUMENT RECORD

TYPE OF MONUMENT: HARRISON  
 ADAMS COUNTY COORDINATES, NAD 83 (2007)

N. 172699.411

E. 573305.847

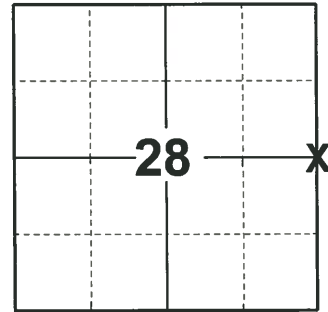
ELEVATION- \_\_\_\_\_ DATUM \_\_\_\_\_

FIELD WORK DATE: 10/06/2020

### BASIS FOR MONUMENT LOCATION

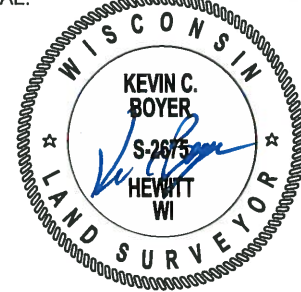
1975 - PLS 1103 RAN EDM/TRANSIT TRAVERSE AROUND SECTIONS 27 AND 34; AND PARTS OF SECTIONS 26 AND 35. ESTABLISHED LOCATION OF CORNER BY RE-CONSTRUCTION OF SURVEY BY FRED ZIETLOW, RLS 922, IN SECTION 28. DID NOT ATTEMPT TO EXCAVATE BECAUSE CORNER FALLS IN CUT SECTION OF ROAD.

2020 - PLS 2675 FOUND HARRISON FLUSH WITH THE ROAD SURFACE, 1 TIE AND 2 WITNESSES. THE MONUMENT AGREES WITH THE EXISTING TIE AND WITNESSES. ACCEPTED THE HARRISON AS THE CORNER LOCATION. SET 1 NEW TIE, MEASURED TO FOUND PROPERTY IRONS, AND THE EXISTING TIE AND WITNESSES.



**LOCATION**  
 (INDICATE CORNER BY "X")

SEAL:



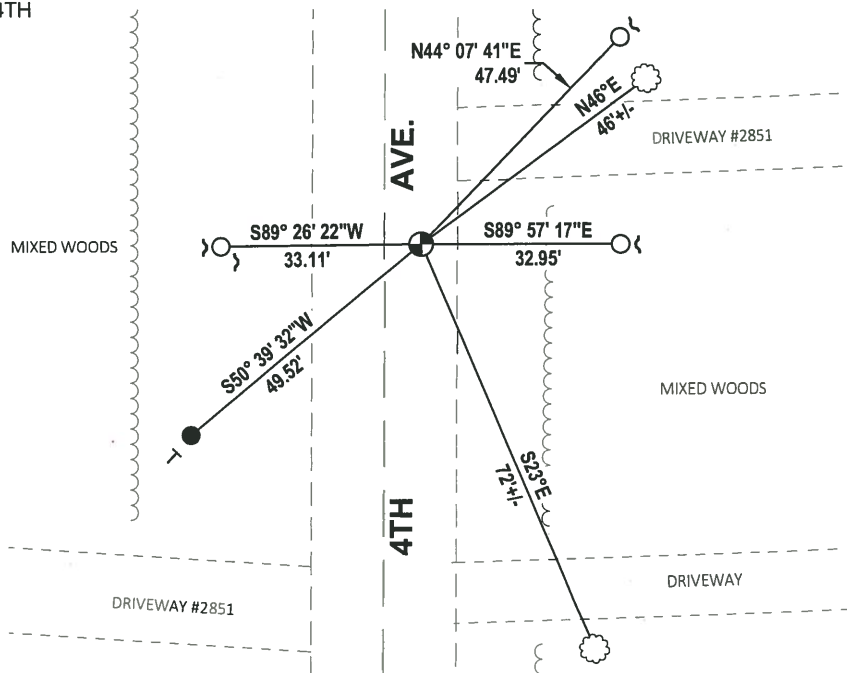
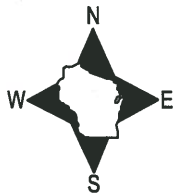
DATA SHOWN HERE ON THIS TIE SHEET IS CORRECT AND COMPLETE TO THE BEST OF MY KNOWLEDGE AND BELIEF.

PROFESSIONAL LAND SURVEYOR

DATE 11/3/2020

### - TIE SKETCH

NOTE: THE CORNER LANDS 6.3± EAST OF 4TH AVE. CENTERLINE.



- SET 3/4" x 18" IRON REBAR, 1.50#/FT
- FOUND 3/4" IRON ROD
- ⊕ FOUND HARRISON MONUMENT
- ✓ STEEL FENCE POST
- ├ VINYL "T" POST
- ☼ WITNESS TREE

ADAMS COUNTY

Survey Monument Record

TYPE OF MONUMENT: Standard Harrison

STATE PLANE COORDINATES: N \_\_\_\_\_

E \_\_\_\_\_

ELEVATION — M.S.L. DATUM: \_\_\_\_\_

THETA ANGLE: \_\_\_\_\_

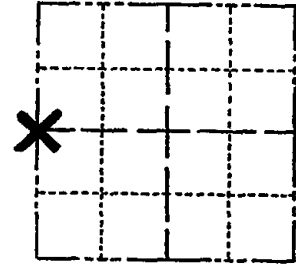
FIELD BOOK: \_\_\_\_\_ PAGE \_\_\_\_\_

CORNER NO. 685 <sup>(97)</sup>

SECTION 27

TOWN 16

RANGE 7



LOCATION  
(Indicated by 'X')

SEAL:

BASIS FOR MONUMENT LOCATION

(Use reverse side if necessary)

Show info such as: History of corner, with reference to Vol. and pg, dates, surveyor; exact description of monument replaced; if location computed, by taped or EDM traverse; landowner remarks, etc.

Ran EDM/transit traverse around Sections 27 and 34; and parts of Sections 26 and 35.

Established location of corner by re-construction of survey by Fred Zietlow, RLS 922, in Section 28.

Did not attempt to excavate because corner falls in cut section of road.

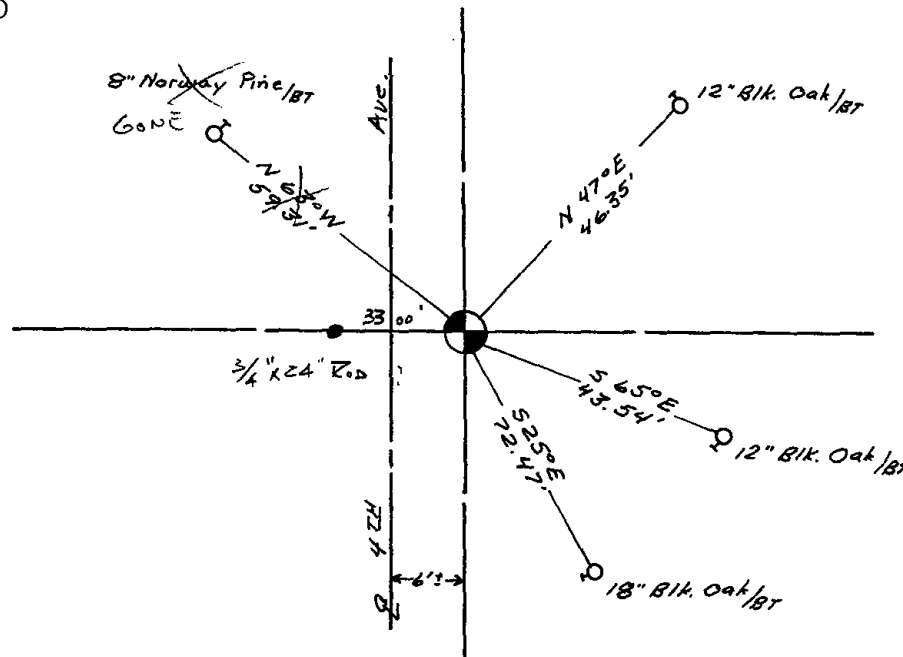


COR. OK	4-12-82	GR-55
" "	12-12-86	CR
160E-1NEW	12-26-91	K2-GR
OK	12-16-96	SS
OK	3-4-02	JG
OK	6-19-07	JG

CERTIFIED CORRECT  
*Dale C. Hagen*  
 Registered Land Surveyor  
 DATE: 6/3/75

TIE SKETCH OK 01-20-12 MS

(Show at least four ties)



**ADAMS COUNTY**

**Survey Monument Record**

TYPE OF MONUMENT: Standard Harrison

STATE PLANE COORDINATES: N \_\_\_\_\_

E \_\_\_\_\_

ELEVATION — M.S.L. DATUM: \_\_\_\_\_

THETA ANGLE: \_\_\_\_\_

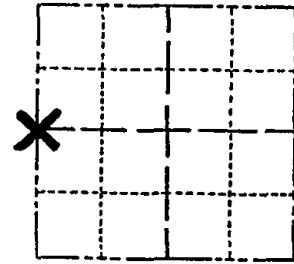
FIELD BOOK: \_\_\_\_\_ PAGE \_\_\_\_\_

CORNER NO. 685 <sup>77</sup>

SECTION 27

TOWN 16

RANGE 7



LOCATION  
(Indicated by 'X')

SEAL:



**BASIS FOR MONUMENT LOCATION**

(Use reverse side if necessary)

Show info such as: History of corner, with reference to Vol. and pg, dates, surveyor; exact description of monument replaced; if location computed, by taped or EDM traverse; landowner remarks, etc.

Ran EDM/transit traverse around Sections 27 and 34; and parts of Sections 26 and 35.

Established location of corner by re-construction of survey by Fred Zietlow, RLS 922, in Section 28.

Did not attempt to excavate because corner falls in cut section of road.

COR. OK	4-12-82	GR-55
" "	12-12-86	GR
160E - 1 NEW	12-26-91	KZ-GR
OK	12-16-96	SS
OK	3-4-02	JG
OK	1-28-03	MC + BF

CERTIFIED CORRECT  
*Dale C. Hagen*  
 Registered Land Surveyor  
 DATE: 6/3/75

**TIE SKETCH**

(Show at least four ties)

