

27
SECTION

16
TOWN

07
RANGE

ADAMS COUNTY

COUNTY CORNER NO: 98

ROMPORTOL ID: 41607272000

PUBLIC LAND SURVEY MONUMENT RECORD

TYPE OF MONUMENT: HARRISON
ADAMS COUNTY COORDINATES, NAD 83 (2007)

N. 172700.407

E. 578569.914

ELEVATION- _____ DATUM _____

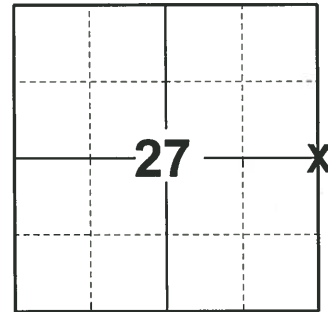
FIELD WORK DATE: 10/06/2020

BASIS FOR MONUMENT LOCATION

UNKNOWN - PLS 1103 TRAVERSED SECTION 27-16-7 WITH EDM/T2. SET HARRISON PROPORTIONATE AND ON LINE. CORNER FALLS 23.20' WEST OF CORNER PER HAPPY ACRES, WHICH WAS NOT SET.

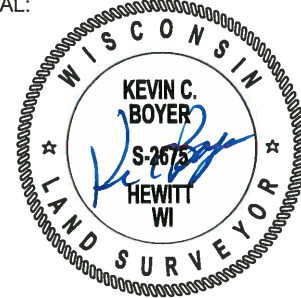
2007 - PLS UNKNOWN RESET HARRISON MONUMENT

2020 - PLS 2675 FOUND HARRISON 6"± BELOW THE GROUND, 2 TIES AND 3 WITNESSES. THE MONUMENT AGREES WITH ALL THE TIES AND WITNESSES. ACCEPTED THE HARRISON AS THE CORNER LOCATION. SET 3 NEW TIES AND MEASURED TO THE EXISTING TIES AND WITNESSES.



LOCATION
(INDICATE CORNER BY "X")

SEAL:

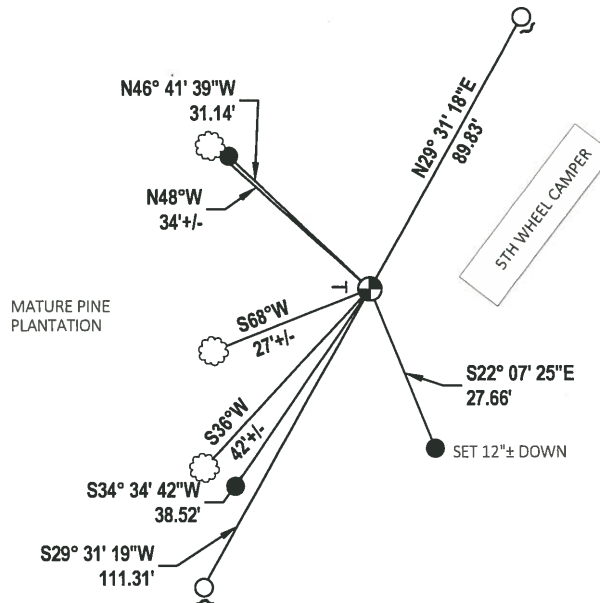


DATA SHOWN HERE ON THIS TIE SHEET IS CORRECT AND COMPLETE TO THE BEST OF MY KNOWLEDGE AND BELIEF.

PROFESSIONAL LAND SURVEYOR

DATE 11/3/2020

- TIE SKETCH



- SET 3/4" x 18" IRON REBAR, 1.50#/FT
- FOUND 3/4" IRON ROD
- ⊕ FOUND HARRISON MONUMENT
- ┘ STEEL FENCE POST
- └ VINYL "T" POST
- ☁ WITNESS TREE

ADAMS COUNTY

Survey Monument Record

TYPE OF MONUMENT: HARRISON STANDARD

STATE PLANE COORDINATES: N _____

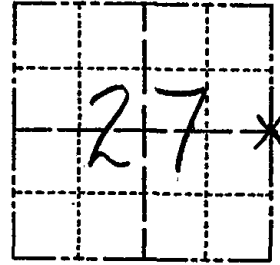
E _____

ELEVATION — M.S.L. DATUM: _____

THETA ANGLE: _____

FIELD BOOK: 37 PAGE 71

CORNER NO. 98
SECTION 27
TOWN 16
RANGE 7



LOCATION
(Indicated by 'X')

SEAL:

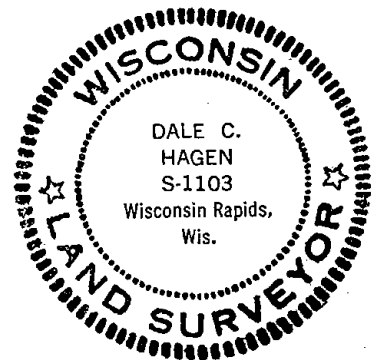
BASIS FOR MONUMENT LOCATION

(Use reverse side if necessary)

Show info such as: History of corner, with reference to Vol. and pg, dates, surveyor; exact description of monument replaced; if location computed, by taped or EDM traverse; landowner remarks, etc.

Traversed Section 27-16-7 with EDM/T2.

Set Harrison proportionate and on line.
Corner falls 23.20 feet west of corner per Happy Acres, which was not set.



CERTIFIED CORRECT

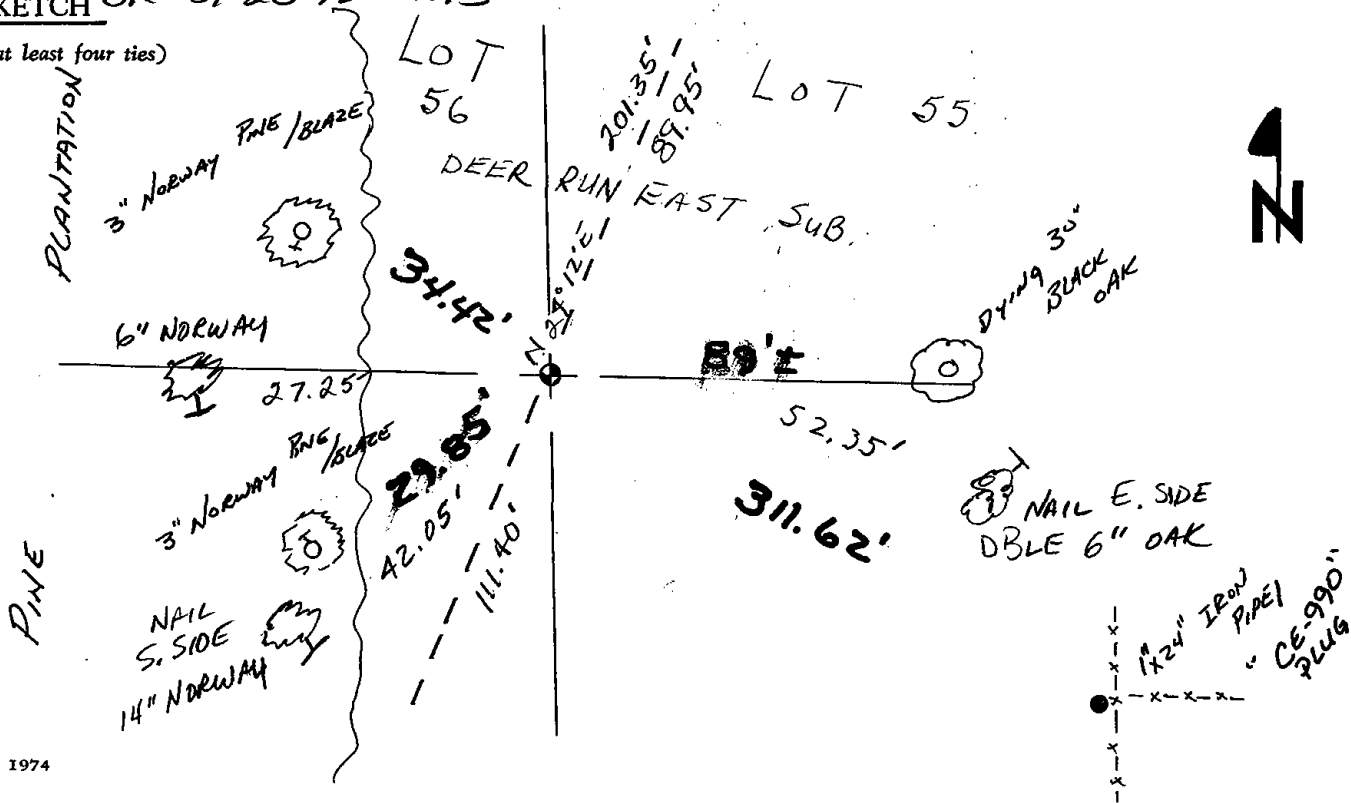
Dale C Hagen
Registered Land Surveyor

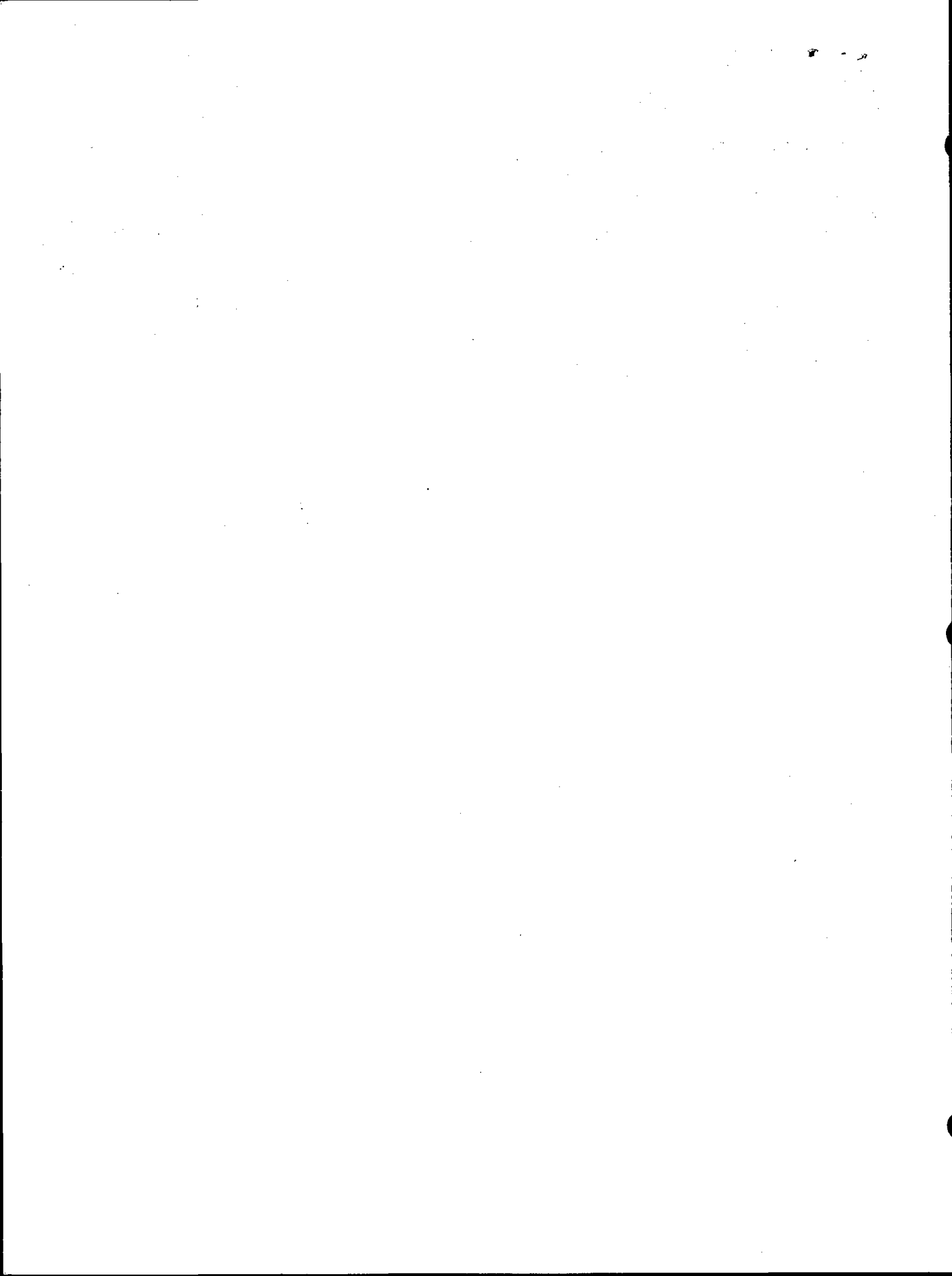
DATE: _____

- COR OK 4-13-82 GR-SS "SEE PLAT"
- " " 12-12-86 CR OK
- " " 12-30-91 GR-56
- " " 1-15-97 JG-SS
- " " 3-5-02 - JG
- COR RESET 9-14-07 3-NEW TIES SS-CS
- SEE ATTACHED 'FIELD NOTES'

TIE SKETCH OK 01-20-12 MS

(Show at least four ties)





@ E 1/4 COR - HARRISON MEASUREMENTS
 85 BARS - COMPARED LOCATIONS
 @ # 24 BASED ON BARS @ 21, 23
 100 TO WEST @ 22 HARRISONS PER SIN
 DIST MEASUREMENT 2652.04
 XC = 2651.72
 COMP 40 COR # 25 - 100 TO # 16
 = 656.90
 XC = 656.84
 27 = 29 TO SET 24
 N 27 SITE 20
 SET 1/4" BAR # 24 - THIS IS 2' SW
 of 6" W.P. - AND OBSOLETE
 DEPRESSION HERE - CANTONARY,
 A CAMPER PHOENIX 6' EAST
 HARRISON SET 9-14-07

