

30 SECTION 16 TOWN 07 RANGE

ADAMS COUNTY

COUNTY CORNER NO: 103
ROMPORTOL ID: 41607300000

PUBLIC LAND SURVEY MONUMENT RECORD

TYPE OF MONUMENT: HARRISON (BROKEN-TOP)
ADAMS COUNTY COORDINATES, NAD 83 (2007)

N. 170002.159

E. 562731.777

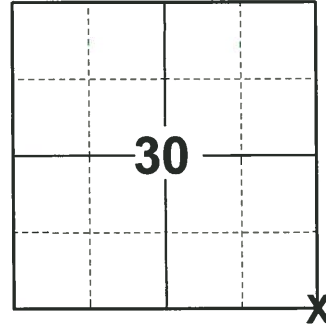
ELEVATION- - - - DATUM - - - -

FIELD WORK DATE: 10/06/2020

BASIS FOR MONUMENT LOCATION

1974 - PLS 878 THIS POINT SET BY INTERSECTING THE NORTH LINE OF THE NORTHWEST 1/4 OF THIS SECTION EXTENDING TO A LINE 33' EAST OF WHISPERING OAKS SUB.

2020 - PLS 2675 FOUND HARRISON (BROKEN-TOP) 18"± BELOW THE ROAD SURFACE AND DID NOT RECOVER ANY EXISTING TIES OR WITNESSES. ACCEPTED THE HARRISON (BROKEN-TOP) AS THE BEST AVAILABLE EVIDENCE OF THE CORNER LOCATION AND SET 4 NEW TIES.



LOCATION
(INDICATE CORNER BY "X")

SEAL:



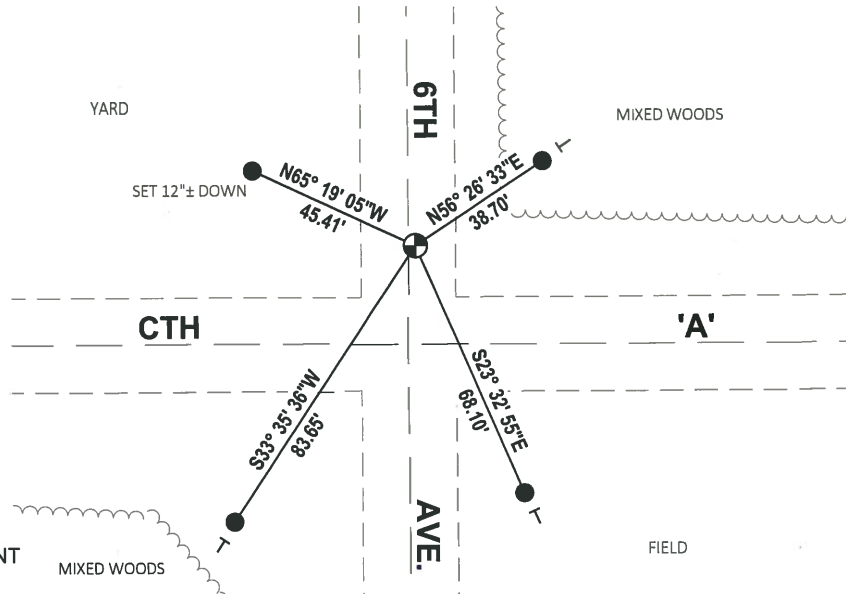
DATA SHOWN HERE ON THIS TIE SHEET IS CORRECT AND COMPLETE TO THE BEST OF MY KNOWLEDGE AND BELIEF.

PROFESSIONAL LAND SURVEYOR

DATE 11/3/2020

TIE SKETCH

NOTE: THE CORNER LANDS 1.7'± EAST OF 6TH AVE. CENTERLINE AND 24.6'± NORTH OF CTH 'A' CENTERLINE.



- SET 3/4" x 18" IRON REBAR, 1.50#/FT
- ⊕ FOUND HARRISON (BROKEN-TOP) MONUMENT
- VINYL "T" POST

ADAMS COUNTY

CORNER NO. 388

Survey Monument Record

SECTION 31

TYPE OF MONUMENT: Harrison Standard

TOWN 17-15

STATE PLANE COORDINATES: N _____

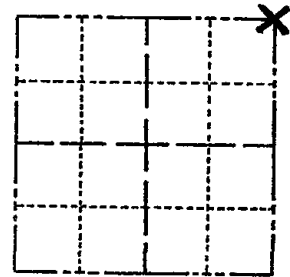
RANGE 67

E _____

ELEVATION — M.S.L. DATUM: _____

THETA ANGLE: _____

FIELD BOOK: _____ PAGE _____



LOCATION
(Indicated by 'X')

SEAL:

BASIS FOR MONUMENT LOCATION

(Use reverse side if necessary)

Show info such as: History of corner, with reference to Vol. and pg, dates, surveyor; exact description of monument replaced; if location computed, by taped or EDM traverse; landowner remarks, etc.

This point set by intersecting the north line of the northwest $\frac{1}{4}$ of this section extended to a line 33' east of ~~Wis~~ Whispering Oaks Sub.



CORNER	D.K.	2-22-77	GR-SS
"	"	3-22-82	"
"	"	12-9-86	"
"	"	12-26-91	KZ-GR
"	"	1/15/97	JG-SS
"	"	1-03-02	MH
2 NEW TIES		1-30-07	JG-SS
01-20-12		OK	MS

CERTIFIED CORRECT:

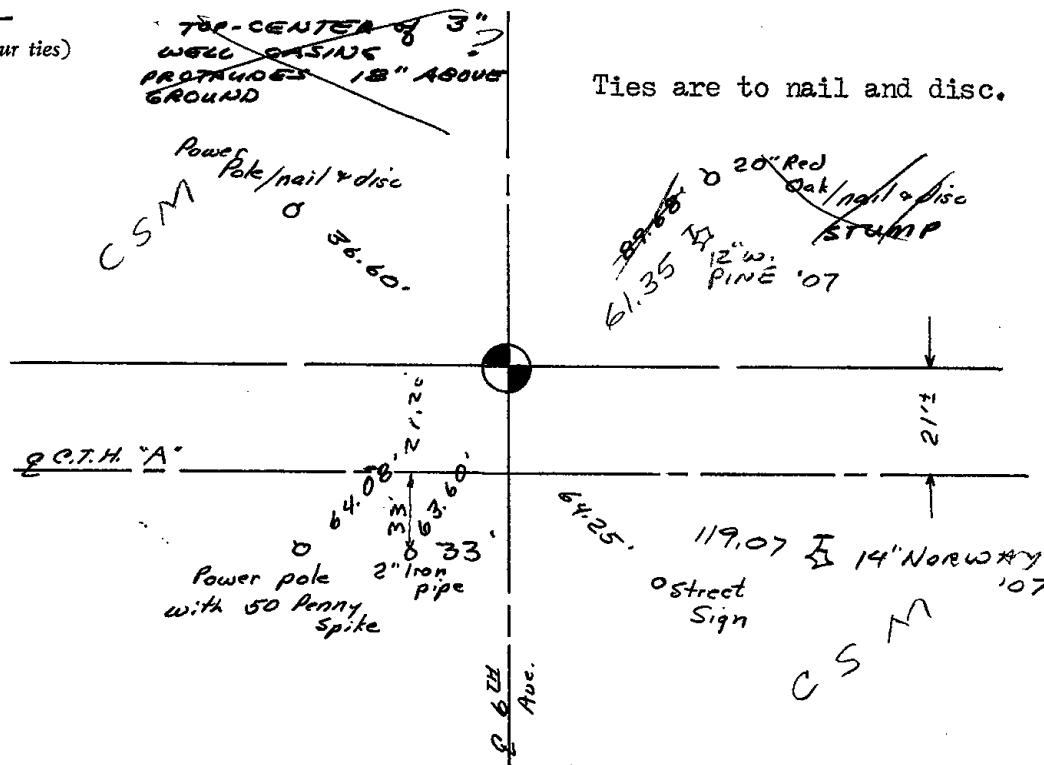
Anthony B. Kiedrowski

Registered Land Surveyor

DATE: 6/6/74

TIE SKETCH

(Show at least four ties)



Ties are to nail and disc.