

27
SECTION

16
TOWN

07
RANGE

ADAMS COUNTY

COUNTY CORNER NO: 109

ROMPORTOL ID: 41607270000

PUBLIC LAND SURVEY MONUMENT RECORD

TYPE OF MONUMENT: HARRISON
ADAMS COUNTY COORDINATES, NAD 83 (2007)

N. 170048.485

E. 578571.965

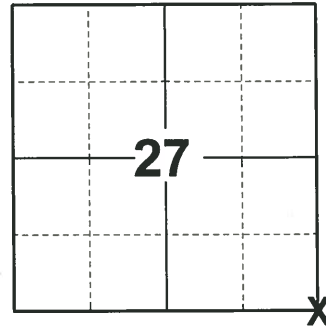
ELEVATION- DATUM

FIELD WORK DATE: 08/25/2020

BASIS FOR MONUMENT LOCATION

1975 - PLS 1103 RAN EDM/TRANSIT TRAVERSE AROUND SECTIONS 27 AND 34 AND PARTS OF SECTIONS 26 AND 35. COULD FIND NO EVIDENCE OF THE ORIGINAL CORNER OR ANY REMONUMENTATION. ALL OF THE ADJACENT LAND IS UNDER SINGLE OWNERSHIP AND HAS BEEN CULTIVATED, SO NO ATTEMPT TO EXCAVATE WAS MADE. SET CORNER BY DOUBLE PROPORTIONATE MEASURE BETWEEN ADJACENT GOVERNMENT CORNERS.

2020 - PLS 2675 FOUND HARRISON 4"± BELOW THE GROUND AND 1 WITNESS TREE. THE MONUMENT AGREES WITH THE WITNESS TREE. ACCEPTED THE HARRISON AS THE CORNER LOCATION. SET 4 NEW TIES AND MEASURED TO THE EXISTING WITNESS TREE.



LOCATION
(INDICATE CORNER BY "X")

SEAL:

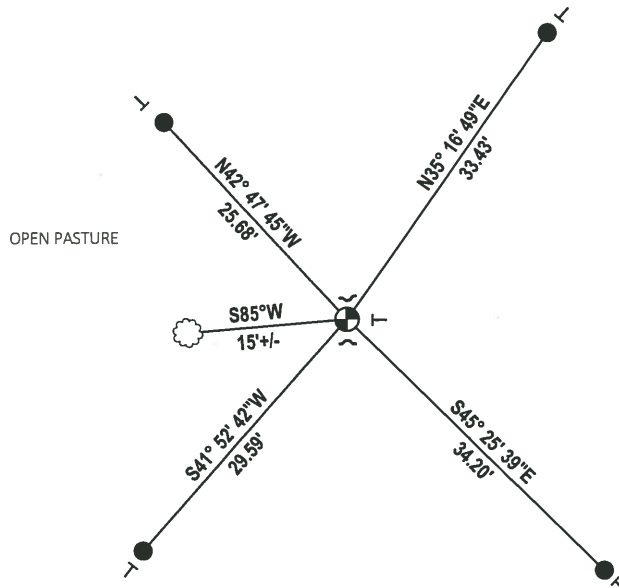


DATA SHOWN HERE ON THIS TIE SHEET IS CORRECT AND COMPLETE TO THE BEST OF MY KNOWLEDGE AND BELIEF.

PROFESSIONAL LAND SURVEYOR

DATE 11/3/2020

- TIE SKETCH



- SET 3/4" x 18" IRON REBAR, 1.50#/FT
- ⊕ FOUND HARRISON MONUMENT
- ┘ STEEL FENCE POST
- └ VINYL "T" POST
- ☁ WITNESS TREE

ADAMS COUNTY

Survey Monument Record

TYPE OF MONUMENT: Standard Harrison

STATE PLANE COORDINATES: N _____

E _____

ELEVATION — M.S.L. DATUM: _____

THETA ANGLE: _____

FIELD BOOK: 37 PAGE 54

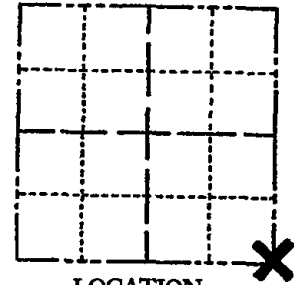
CORNER NO. 686

SECTION 27

TOWN 16

RANGE 7

109



LOCATION
(Indicated by 'X')

SEAL:



BASIS FOR MONUMENT LOCATION

(Use reverse side if necessary)

Show info such as: History of corner, with reference to Vol. and pg, dates, surveyor; exact description of monument replaced; if location computed, by taped or EDM traverse; landowner remarks, etc.

Ran EDM/transit traverse around Sections 27 and 34. and parts of Sections 26 and 35.

Could find no evidence of the original corner or any remonumentation. All of the adjacent land is under single ownership and has been cultivated, so no attempt to excavate was made.

Set corner by double proportionate measure between adjacent government corners.

CORNER	O.K.	2-22-77	GR-55
"	"	4-13-82	"
"	"	1-5-87	"
"	"	1-2-97	GR-56
"	"	1-15-97	JG-55



CERTIFIED CORRECT:

Dale C. Hagen
Registered Land Surveyor
DATE: 6-3-75

TIE SKETCH CORNER OK 3-5-02-JG
OK, 10-01-07-JG
(Show at least four ties) OK 01-25-12 MS

NOTE:
Ties in trees to
nail in disc.

