

ADAMS COUNTY

PUBLIC LAND SURVEY MONUMENT RECORD

TYPE OF MONUMENT: HARRISON
 ADAMS COUNTY COORDINATES, NAD 83 (2007)

N. 170055.670

E. 586495.799

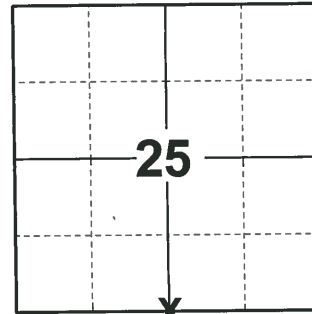
ELEVATION- _____ DATUM _____

FIELD WORK DATE: 08/25/2020

BASIS FOR MONUMENT LOCATION

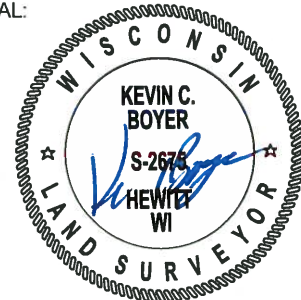
1975 - PLS 1103 EQUIDISTANT AND ON LINE BETWEEN ADJACENT SECTION CORNERS. RAN EDM/TRANSIT TRAVERSE OF ENTIRE AREA TO DETERMINE SEARCH AREAS. HAND EXCAVATION REVEALED NO CONCLUSIVE EVIDENCE OF ANY MONUMENTATION.

2020 - PLS 2675 FOUND HARRISON 2"± ABOVE THE GROUND AND DID NOT RECOVER ANY TIES OR WITNESSES. VERIFIED THAT THE CORNER IS ON A NEAR STRAIGHT LINE AND EQUIDISTANT BETWEEN ADJACENT SECTION CORNERS. ACCEPTED THE HARRISON AS THE BEST AVAILABLE EVIDENCE OF THE CORNER LOCATION AND SET 4 NEW TIES.



LOCATION
 (INDICATE CORNER BY "X")

SEAL:

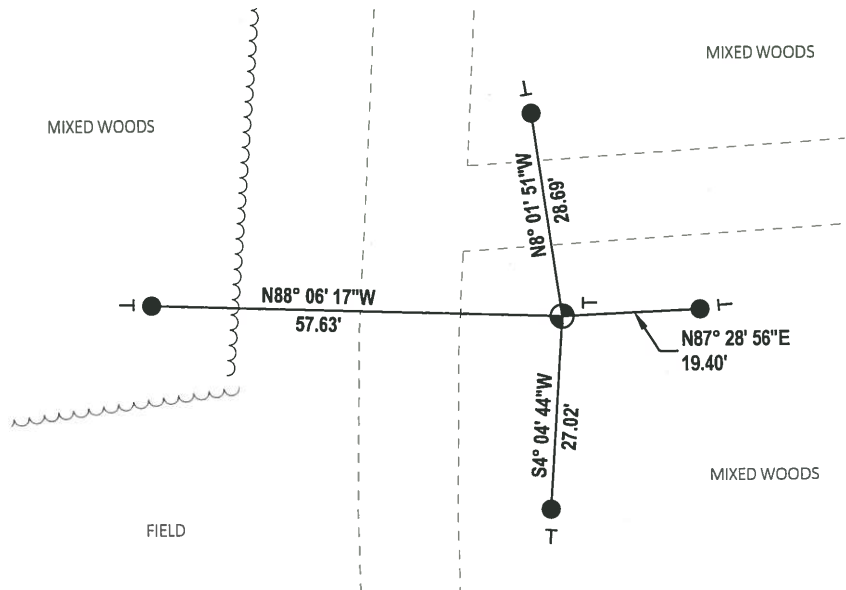
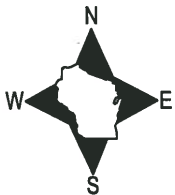


DATA SHOWN HERE ON THIS TIE SHEET IS CORRECT AND COMPLETE TO THE BEST OF MY KNOWLEDGE AND BELIEF.

PROFESSIONAL LAND SURVEYOR

DATE 11/3/2020

- TIE SKETCH



- SET 3/4" x 18" IRON REBAR, 1.50#/FT
- ⊕ FOUND HARRISON MONUMENT
- VINYL "T" POST

ADAMS COUNTY

Survey Monument Record

TYPE OF MONUMENT: Harrison Monument

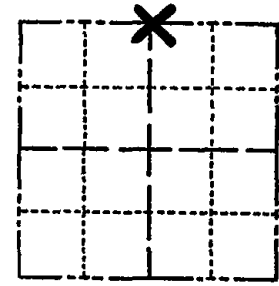
STATE PLANE COORDINATES: N _____
E _____

ELEVATION — M.S.L. DATUM: _____

THETA ANGLE: _____

FIELD BOOK: _____ PAGE _____

CORNER NO. 688 ⁽¹¹²⁾
SECTION 36
TOWN 16
RANGE 7



LOCATION
(Indicated by 'X')

SEAL:

BASIS FOR MONUMENT LOCATION

(Use reverse side if necessary)

Show info such as: History of corner, with reference to Vol. and pg. dates, surveyor; exact description of monument replaced; if location computed, by taped or EDM traverse; landowner remarks, etc.

Equidistant and on line between adjacent Section corners.

Ran EDM/ transit traverse of entire area to determine search areas. Hand excavation revealed no conclusive evidence of any monumentation.



CORNER O.K. 2-22-77 GR-SS
" " 4-12-82 "
" " 12-9-86 "
1 NEW TIE 12-23-91 KZ-SS
OK A. PAULSON 8-28-85
1 NEW TIE 12-11-96 SS
OK 3-5-02 - JG

CERTIFIED CORRECT:

Dale C. Hagen
Registered Land Surveyor

DATE: 6/3/75

TIE SKETCH

(Show at least four ties)

NOTE: Ties in trees to nail in disc.

