

33
SECTION

16
TOWN

07
RANGE

ADAMS COUNTY

COUNTY CORNER NO: 117

ROMPORTOL ID: 41607332000

PUBLIC LAND SURVEY MONUMENT RECORD

TYPE OF MONUMENT: HARRISON
ADAMS COUNTY COORDINATES, NAD 83 (2007)

N. 167403.922

E. 573285.475

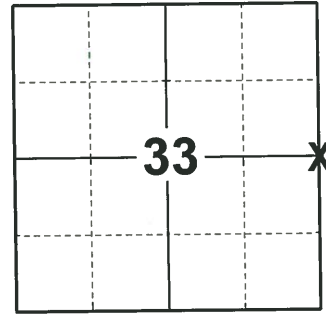
ELEVATION- - - - - DATUM - - - - -

FIELD WORK DATE: 10/07/2020

BASIS FOR MONUMENT LOCATION

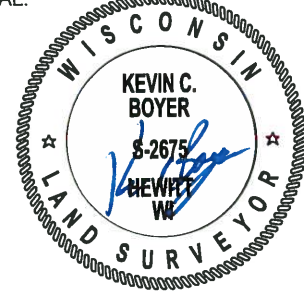
1975 - PLS 1103 RAN EDM/TRANSIT TRAVERSE AROUND SECTIONS 27, AND 34, AND PARTS OF SECTIONS 26, AND 35, PICKING UP ALL AVAILABLE EVIDENCE. SET QUARTER CORNER EQUIDISTANT BETWEEN ADJACENT SECTION CORNERS AND AT 40 CHAINS FROM THE CENTER OF SECTION 34 AS DESCRIBED ON PAGE 120 OF VOLUME 1 OF SURVEY RECORDS IN THE COUNTY SURVEYORS OFFICE AND AS DONE BY M.C. SMITH, ADAMS COUNTY SURVEYOR ON APRIL 25, 1910. CORNER LOCATION FITS POSSESSION WELL.

2020 - PLS 2675 FOUND HARRISON 18"± BELOW THE ROAD SURFACE AND 2 WITNESSES. THE MONUMENT AGREES WITH BOTH WITNESSES. ACCEPTED THE HARRISON AS THE CORNER LOCATION. SET 4 NEW TIES AND MEASURED TO THE EXISTING WITNESSES.



LOCATION
(INDICATE CORNER BY "X")

SEAL:



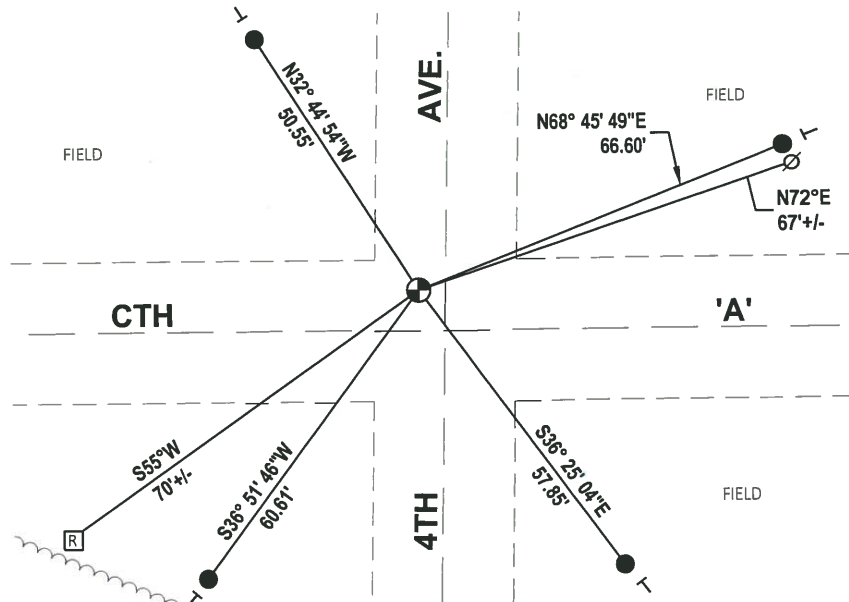
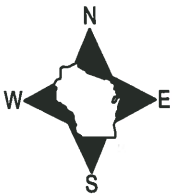
DATA SHOWN HERE ON THIS TIE SHEET IS CORRECT AND COMPLETE TO THE BEST OF MY KNOWLEDGE AND BELIEF.

PROFESSIONAL LAND SURVEYOR

DATE 11/3/2020

- TIE SKETCH

NOTE: THE CORNER LANDS 4.5'± WEST OF 4TH AVE. CENTERLINE AND 7'± NORTH OF CTH 'A' CENTERLINE.



- SET 3/4" x 18" IRON REBAR, 1.50#/FT
- ⊙ FOUND HARRISON MONUMENT
- ∅ WITNESS POWER POLE
- VINYL "T" POST
- Ⓜ NE COR. OF RIGHT-OF-WAY GUARD POST

ADAMS COUNTY

Survey Monument Record

TYPE OF MONUMENT: Harrison Standard

STATE PLANE COORDINATES: N _____
E _____

ELEVATION — M.S.L. DATUM: _____

THETA ANGLE: _____

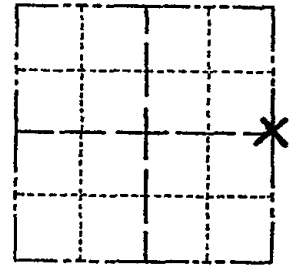
FIELD BOOK: _____ PAGE _____

CORNER NO. 407 ⁽¹¹⁵⁾

SECTION 31

TOWN 16

RANGE 7



LOCATION
(Indicated by 'X')

SEAL:



BASIS FOR MONUMENT LOCATION

(Use reverse side if necessary)

Show info such as: History of corner, with reference to Vol. and pg, dates, surveyor; exact description of monument replaced; if location computed, by taped or EDM traverse; landowner remarks, etc.

Set by retracing ties to adjacent recorded plats.

| | | | |
|--------|------|----------|-------|
| CORNER | O.K. | 3-8-77 | GR-55 |
| " | " | 4-13-82 | " |
| " | " | 12-9-86 | " |
| " | " | 12-26-91 | KZ-GR |
| " | " | 1/15/97 | JG-55 |
| " | " | 1-09-02 | ML |

CERTIFIED CORRECT:

Anthony B. Kiedrowski
Registered Land Surveyor

DATE: 6/12/74

TIE SKETCH " " 1-30-07 JG-55 OK 01-20-12 MS

(Show at least four ties)

