

## PUBLIC LAND SURVEY MONUMENT RECORD

TYPE OF MONUMENT: HARRISON (BROKEN-TOP)  
 ADAMS COUNTY COORDINATES, NAD 83 (2007)

N. 167353.264

E. 568012.523

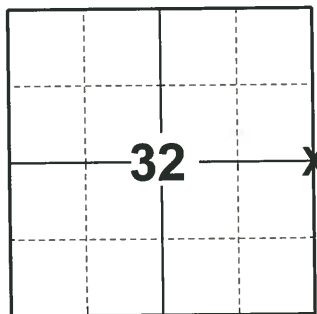
ELEVATION-        DATUM       

FIELD WORK DATE: 10/07/2020

### BASIS FOR MONUMENT LOCATION

1976 - PLS 1103 RAN EDM/T2 TRAVERSE AROUND SECTIONS 32, 33, AND 34 TO DETERMINE SEARCH AREA FOR INVESTIGATION. EXCAVATION YIELDED NO EVIDENCE OF THE ORIGINAL CORNER, REMONUMENTATION OR ANY ACCESSORY MONUMENTS. RE-ESTABLISHED CORNER BY SINGLE PROPORTIONATE MEASURE AND ON LINE BETWEEN ADJACENT SECTION CORNERS. SET HARRISON MONUMENT.

2020 - PLS 2675 FOUND HARRISON (BROKEN-TOP) 30"± BELOW THE GROUND AND 3 WITNESSES. THE MONUMENT AGREES WITH ALL EXISTING WITNESSES. ACCEPTED THE HARRISON (BROKEN-TOP) AS THE CORNER LOCATION. SET 4 NEW TIES AND MEASURED TO THE EXISTING WITNESSES.



**LOCATION**  
(INDICATE CORNER BY "X")

SEAL:



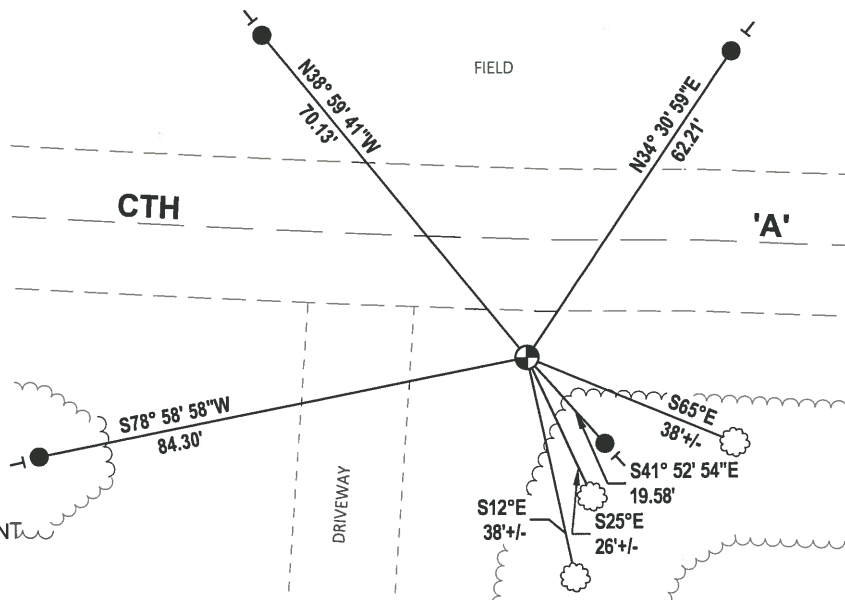
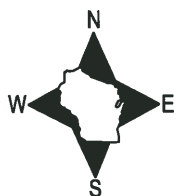
DATA SHOWN HERE ON THIS TIE SHEET IS CORRECT AND COMPLETE TO THE BEST OF MY KNOWLEDGE AND BELIEF.

PROFESSIONAL LAND SURVEYOR

DATE 11/3/2020

### - TIE SKETCH

NOTE: THE CORNER LANDS 20'± SOUTH OF CTH 'A' CENTERLINE.



- SET 3/4" x 18" IRON REBAR, 1.50#/FT
- ⊕ FOUND HARRISON (BROKEN-TOP) MONUMENT
- VINYL "T" POST
- ⊗ WITNESS TREE

ADAMS COUNTY

Survey Monument Record

TYPE OF MONUMENT: Harrison Monument

STATE PLANE COORDINATES: N \_\_\_\_\_

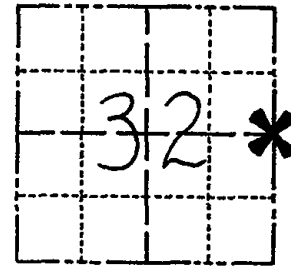
E \_\_\_\_\_

ELEVATION — M.S.L. DATUM: \_\_\_\_\_

THETA ANGLE: \_\_\_\_\_

FIELD BOOK: 38 PAGE 21

CORNER NO. 116  
SECTION 32  
TOWN 16  
RANGE 7



LOCATION  
(Indicated by 'X')

SEAL:

BASIS FOR MONUMENT LOCATION

(Use reverse side if necessary)

Show info such as: History of corner, with reference to Vol. and pg, dates, surveyor; exact description of monument replaced; if location computed, by taped or EDM traverse; landowner remarks, etc.



Ran EDM/T2 traverse around Sections 32, 33 and 34 to determine search area for investigation. Excavation yielded no evidence of the original corner, remonumentation or any accessory monuments.

Re-established corner by single proportionate measure and on line between adjacent section corners.

Set Harrison monument 10-20-76.

- Cor. OK 4-13-82 SS (@ STEEL FENCE POST)
- " " 12-12-86 GR-93
- " " 12-26-91 KZ-GR
- " " 1-15-97 JG-SS
- " " 1-03-02 ML

CERTIFIED CORRECT:

Dale C Hagen  
Registered Land Surveyor  
DATE: 12-2-76

TIE SKETCH TOP BROKEN OFF, 1.5' FT DEEP, 3-GONE, 3-NEW, 6-19-07- JG  
OK 1-20-12 MS NOTE:

(Show at least four ties)

Ties in trees to nail in disc.

