

PUBLIC LAND SURVEY MONUMENT RECORD

TYPE OF MONUMENT: HARRISON (BROKEN-TOP)
 ADAMS COUNTY COORDINATES, NAD 83 (2007)

N. 167348.627

E. 562733.541

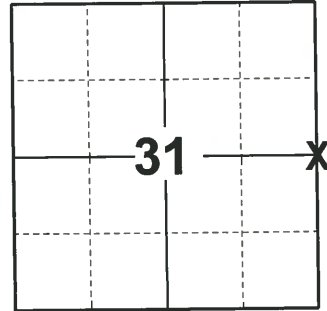
ELEVATION- - - - DATUM - - - -

FIELD WORK DATE: 10/07/2020

BASIS FOR MONUMENT LOCATION

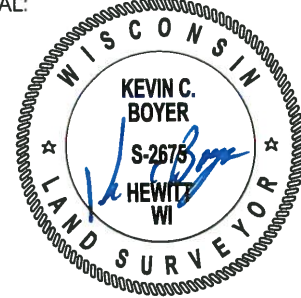
1974 - PLS 878 ST BY RETRACING TIES TO ADJACENT RECORDED PLATS.

2020 - PLS 2675 FOUND HARRISON (BROKEN-TOP) 18"± BELOW THE ROAD SURFACE AND 2 TIES. THE MONUMENT AGREES WITH BOTH TIES. ACCEPTED THE HARRISON (BROKEN-TOP) AS THE CORNER LOCATION. SET 2 NEW TIES, MEASURED TO A FOUND PROPERTY IRON, AND THE EXISTING TIES.



LOCATION
 (INDICATE CORNER BY "X")

SEAL:



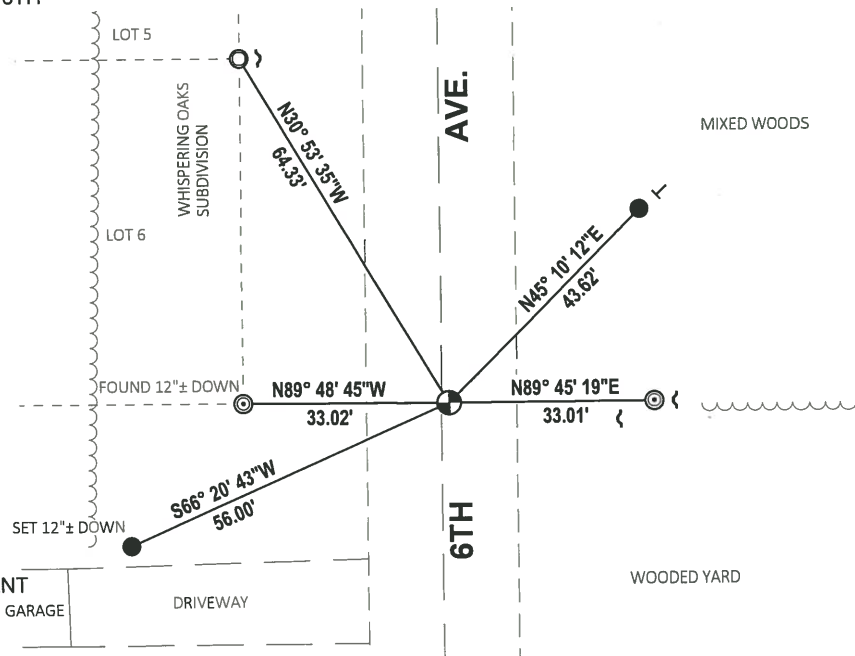
DATA SHOWN HERE ON THIS TIE SHEET IS CORRECT AND COMPLETE TO THE BEST OF MY KNOWLEDGE AND BELIEF.

PROFESSIONAL LAND SURVEYOR

DATE 11/3/2020

- TIE SKETCH

NOTE: THE CORNER LANDS 1.2'± EAST OF 6TH AVE. CENTERLINE.



- SET 3/4" x 18" IRON REBAR, 1.50#/FT
- FOUND 1-1/4" O.D. IRON PIPE
- ◎ FOUND 2.00" O.D. IRON PIPE
- ⊕ FOUND HARRISON (BROKEN-TOP) MONUMENT
- ┌ STEEL FENCE POST
- └ VINYL "T" POST

ADAMS COUNTY

Survey Monument Record

TYPE OF MONUMENT: Harrison Standard

STATE PLANE COORDINATES: N _____
E _____

ELEVATION — M.S.L. DATUM: _____

THETA ANGLE: _____

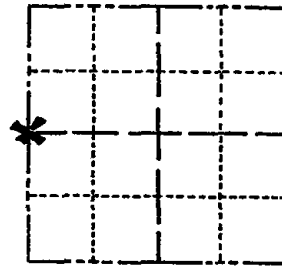
FIELD BOOK: _____ PAGE _____

CORNER NO. 677

SECTION 34

TOWN 16 N

RANGE 7 E



LOCATION
(Indicated by 'X')

SEAL:



BASIS FOR MONUMENT LOCATION

(Use reverse side if necessary)

Show info such as: History of corner, with reference to Vol. and pg, dates, surveyor; exact description of monument replaced; if location computed, by taped or EDM traverse; landowner remarks, etc.

Ran EDM/transit traverse around Sections 27 and 34, and parts of Sections 26 and 35, picking up all available evidence.

Set Quarter corner Equidistant between adjacent section corners and at 40 chains from the center of Section 34 as as described on Page 120 of Volume 1 of Survey Records in the County Surveyors Office and as done by M. C. Smith, Adams County Surveyor on April 25, 1910.

Corner location fits possession well.

CORNER	O.K.	3-28-77	GR-55
"	"	4-13-82	SS
"	"	1-5-87	GR-55
"	"	12-26-91	K2-GR

CERTIFIED CORRECT:

Dale C. Hagen
Registered Land Surveyor

DATE: 6/3/75

TIE SKETCH

1-15-97 JG-55
OK 1-03-02 - Mh

(Show at least four ties) 1-TIES LEFT, NEED TO RETIED OR SURVEYED INTO 6-19-07 - JG

1-20-12 FD PK-2 NEW TIES MS

NOTE: Ties in trees to nail in disc.

NOTE: Bearing trees marked BT are blazed and scribed BT facing the corner.

