

PUBLIC LAND SURVEY MONUMENT RECORD

TYPE OF MONUMENT: HARRISON
 ADAMS COUNTY COORDINATES, NAD 83 (2007)

N. 164753.237

E. 575898.304

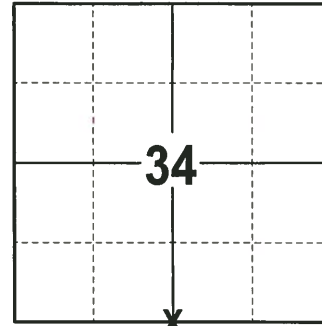
ELEVATION- --- DATUM ---

FIELD WORK DATE: 12/12/2017

BASIS FOR MONUMENT LOCATION

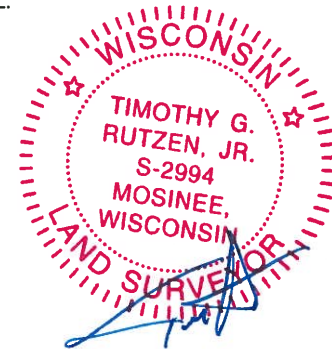
1975 - PLS 1103 RAN EDM/TRANSIT TRAVERSE AROUND SECTIONS 27, 32, 33, 34 AND ADJACENT SECTION CORNERS TO DETERMINE THE SEARCH AREA. DID NOT EXCAVATE BECAUSE THE SEARCH AREA FALLS WITHIN A CULTIVATED FIELD. RE-ESTABLISHED THE CORNER BY SINGLE PROPORTIONATE MEASUREMENT ON A LINE BETWEEN THE ADJACENT SECTION CORNERS. SET A HARRISON MONUMENT AT THE CALCULATED LOCATION AND TIED OUT.

2017 - PLS 2994 FOUND A HARRISON MONUMENT 18" BELOW THE SURFACE OF THE FIELD. DID NOT RECOVER ANY TIES OR WITNESSES. ACCEPTED THE HARRISON MONUMENT AS THE CORNER LOCATION. SET 4 NEW TIES AND MEASURED TO THE TIES.



LOCATION
 (INDICATE CORNER BY "X")

SEAL:



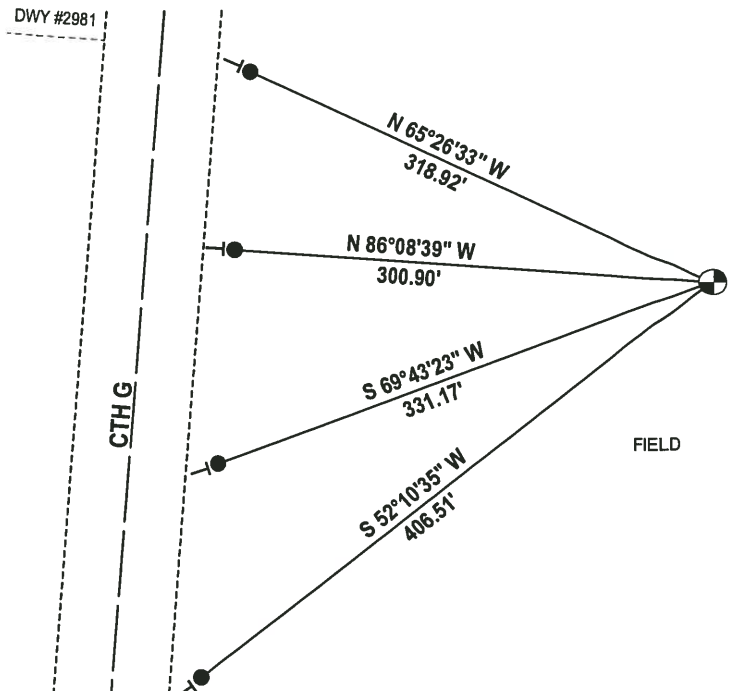
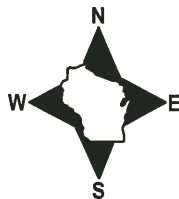
DATA SHOWN HERE ON THIS TIE SHEET IS CORRECT AND COMPLETE TO THE BEST OF MY KNOWLEDGE AND BELIEF.

PROFESSIONAL LAND SURVEYOR

DATE 1-4-18

- TIE SKETCH -

NOTE: THE CORNER FALLS 332± EAST OF THE CENTERLINE OF CTH G.



- 3/4" x 18" IRON REBAR SET, 1.50#/FT
- ⊕ HARRISON FOUND
- └ VINYL "T" POST

ADAMS COUNTY

Survey Monument Record

TYPE OF MONUMENT: Harrison Monument

STATE PLANE COORDINATES: N _____
E _____

ELEVATION — M.S.L. DATUM: _____

THETA ANGLE: _____

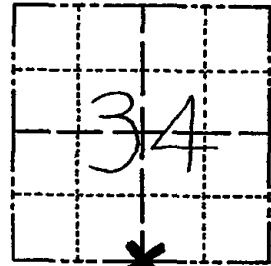
FIELD BOOK: 37 PAGE 65

CORNER NO. 128

SECTION 34

TOWN 16

RANGE 7



LOCATION
(Indicated by 'X')

SEAL:



BASIS FOR MONUMENT LOCATION

(Use reverse side if necessary)

Show info such as: History of corner, with reference to Vol. and pg. dates, surveyor; exact description of monument replaced; if location computed, by taped or EDM traverse; landowner remarks, etc.

Ran EDM/traverse traverse around Sections 27, 32, 33 and 34, and to adjacent section corners to determine search area.

Did not excavate because search area falls within cultivated field.

Re-established corner by single proportionate measure on line between adjacent section corners.

Set 10-25-76.

COR. OK. 4-13-82 GR-55
" " 1-5-87 " "
" " 1-2-92 GR-56
" " 1-15-97 JG-55
CHECK FOR TIES IN SPRING 3-5-02 - JG

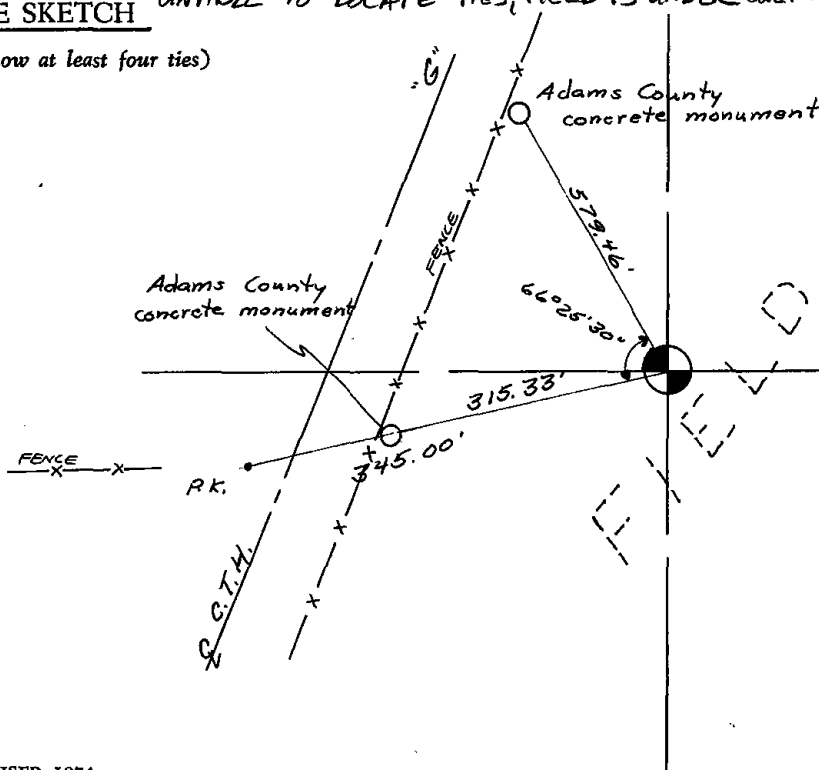
CERTIFIED CORRECT:

Dale C. Hagen
Registered Land Surveyor

DATE: 12-2-76

TIE SKETCH UNABLE TO LOCATE TIES, FIELD IS UNDER CULTIVATION, 6-20-07 - JG

(Show at least four ties)



NOTES:

- 1) No other bearing objects available.
- 2) Monument placed below plow depth.