

34  
SECTION

16  
TOWN

07  
RANGE

# ADAMS COUNTY

COUNTY CORNER NO: 129

ROMPORTOL ID: 41607340000

## PUBLIC LAND SURVEY MONUMENT RECORD

TYPE OF MONUMENT: 3/4" x 48" IRON REBAR  
ADAMS COUNTY COORDINATES, NAD 83 (2007)

N. 164756.716

E. 578538.898

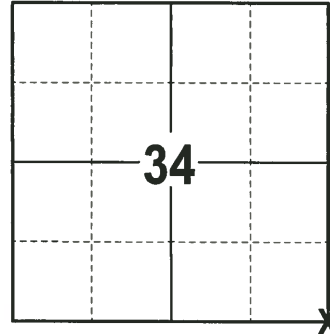
ELEVATION-      DATUM     

FIELD WORK DATE: 12/13/2017

### BASIS FOR MONUMENT LOCATION

1975 - PLS 1103 RAN EDM/TRANSIT TRAVERSE AROUND SECTIONS 27, 34 AND PARTS OF SECTIONS 26 AND 35. COULD NOT FIND ANY EVIDENCE OF THE ORIGINAL CORNER OR ANY REMONUMENTATION. RE-ESTABLISHED THE CORNER BY SINGLE PROPORTIONATE MEASUREMENT BETWEEN THE SOUTHWEST CORNER OF SECTION 34 AND THE SOUTH QUARTER CORNER OF SECTION 35. SET A NAIL AND DISC IN A NOTCH OF A TREE AND TIED OUT.

2017 - PLS 2994 FOUND A PK NAIL AND DISC IN A TWIN PINE STUMP. ALL OF THE TIES WERE DESTROYED DUE TO LOGGING. THE STUMP WAS DETERIORATING AND THE PK NAIL WAS NOT IN A STABLE POSITION. REMOVED THE PK NAIL, BROKE AWAY ENOUGH OF THE STUMP REMAINS TO SET A 3/4" x 48" IRON REBAR AT THE PRIOR PK NAIL LOCATION. SET 4 NEW TIES AND MEASURED TO THE TIES.



LOCATION  
(INDICATE CORNER BY "X")

SEAL:

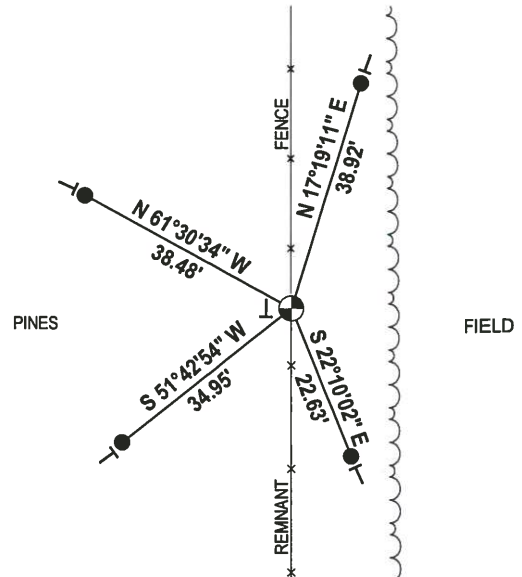
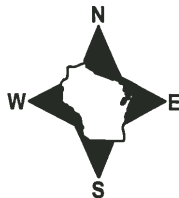


DATA SHOWN HERE ON THIS TIE SHEET IS CORRECT AND COMPLETE TO THE BEST OF MY KNOWLEDGE AND BELIEF.

PROFESSIONAL LAND SURVEYOR

DATE 1-4-18

### - TIE SKETCH -



- 3/4" x 18" IRON REBAR SET, 1.50#/FT
- ⊕ 3/4" x 48" IRON REBAR SET, 1.50#/FT
- VINYL "T" POST

# ADAMS COUNTY

## Survey Monument Record

CORNER NO. 675  
 SECTION 34  
 TOWN 16 N  
 RANGE 7 E

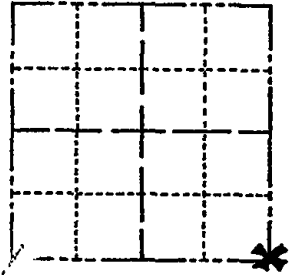
TYPE OF MONUMENT: Nail and Disc in Notch of Tree

STATE PLANE COORDINATES: N \_\_\_\_\_  
E \_\_\_\_\_

ELEVATION — M.S.L. DATUM: \_\_\_\_\_

THETA ANGLE: \_\_\_\_\_

FIELD BOOK: \_\_\_\_\_ PAGE \_\_\_\_\_



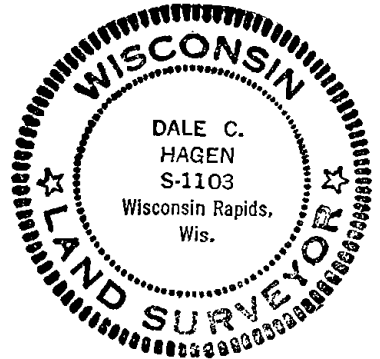
LOCATION  
(Indicated by 'X')

### BASIS FOR MONUMENT LOCATION

(Use reverse side if necessary)

Show info such as: History of corner, with reference to Vol. and pg, dates, surveyor; exact description of monument replaced; if location computed, by taped or EDM traverse; landowner remarks, etc.

SEAL:



Ran EDM/transit traverse around Sections 27 and 34, and parts of Sections 26 and 35.

Could find no evidence of the original corner or any remonumentation.

Re-established corner by single proportionate measure between the Southwest corner of Section 34 and the South Quarter corner of Section 35.

CORNER	D.T.	10-28-76	RN-SS
"	"	4-13-82	GR-SS
"	"	1-5-87	" "
"	"	1-2-92	GR-JG
"	"	1-15-97	JG-SS
"	"	3-5-02	JG

CERTIFIED CORRECT:

Dale C. Hagen  
Registered Land Surveyor

DATE: 6/3/75

### TIE SKETCH AREA LOGGED OFF, ALL TREES CUT, CORNER NEEDS TO RESET, 6-20-07-JG

(Show at least four ties)

