

35
SECTION

16
TOWN

07
RANGE

ADAMS COUNTY

COUNTY CORNER NO: 130
ROMPORTOL ID: 41607350020

PUBLIC LAND SURVEY MONUMENT RECORD

TYPE OF MONUMENT: HARRISON
ADAMS COUNTY COORDINATES, NAD 83 (2007)

N. 164759.642

E. 581179.620

ELEVATION- - - DATUM - -

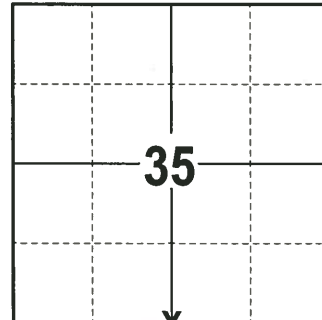
FIELD WORK DATE: 12/13/2017

BASIS FOR MONUMENT LOCATION

1975 - PLS 1103 RAN EDM/TRANSIT TRAVERSE AROUND SECTIONS 35, 26 AND PARTS OF 34 AND 27. SET THE CORNER ON EAST-WEST FENCE LINES AT C/L CTH A POSITION, FIT THE ORIGINAL NOTES WELL. DID NOT EXCAVATE BECAUSE THE CORNER FALLS IN A CUT SECTION OF THE ROAD. SET A HARRISON MONUMENT AT THE CALCULATED LOCATION AND TIED OUT.

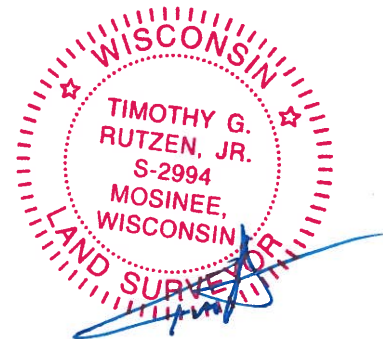
2006 - PLS (UNKNOWN) LOCATED AND TIED THIS CORNER WHICH WAS THEN TAKEN OUT DUE TO ROAD CONSTRUCTION. AFTER COMPLETION OF THE ROAD CONSTRUCTION A HARRISON MONUMENT WAS SET AT THE CORNER LOCATION AND NEW TIES WERE SET.

2017 - PLS 2994 FOUND A HARRISON MONUMENT 4" BELOW THE ROAD SURFACE AND 1 WITNESS. THE MONUMENT AGREES WITH THE EXISTING WITNESS. ACCEPTED THE HARRISON MONUMENT AS THE CORNER LOCATION. SET 4 NEW TIES AND MEASURED TO THE TIES AND WITNESS.



LOCATION
(INDICATE CORNER BY "X")

SEAL:



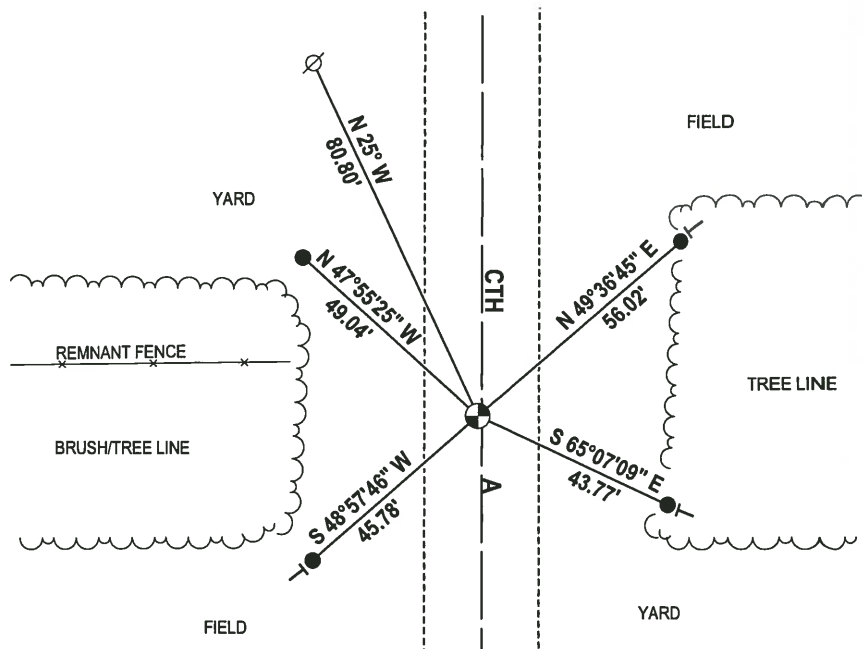
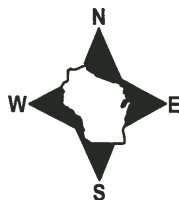
DATA SHOWN HERE ON THIS TIE SHEET IS CORRECT AND COMPLETE TO THE BEST OF MY KNOWLEDGE AND BELIEF.

PROFESSIONAL LAND SURVEYOR

DATE 1-4-18

- TIE SKETCH -

NOTE: THE CORNER FALLS 1½ WEST OF THE CENTERLINE OF CTH A.



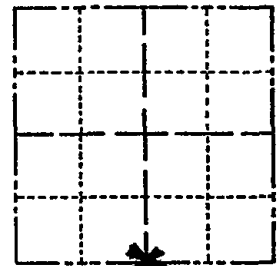
- 3/4" x 18" IRON REBAR SET, 1.50#/FT
- ⊙ HARRISON FOUND
- ⊗ WITNESS POWER POLE
- ⊣ VINYL "T" POST

ADAMS COUNTY

Survey Monument Record

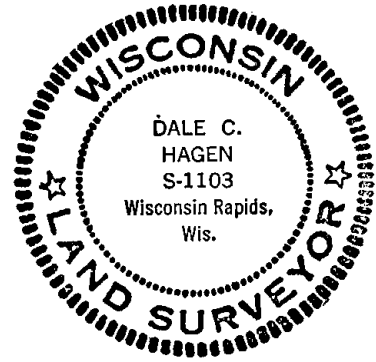
CORNER NO. 678
 SECTION 35
 TOWN 16 N
 RANGE 7 E

TYPE OF MONUMENT: Harrison Standard
 STATE PLANE COORDINATES: N _____
 E _____
 ELEVATION — M.S.L. DATUM: _____
 THETA ANGLE: _____
 FIELD BOOK: _____ PAGE _____



LOCATION
(Indicated by 'X')

SEAL:



BASIS FOR MONUMENT LOCATION

(Use reverse side if necessary)

Show info such as: History of corner, with reference to Vol. and pg, dates, surveyor; exact description of monument replaced; if location computed, by taped or EDM traverse; landowner remarks, etc.

Ran EEM/transit traverse around Sections 35 and 26, and parts of 34 and 27.

Set corner opposite fence lines in CTH 'A'.
Fit original notes well.

Did not excavate because corner falls in cut section of road.

CORNER O.K.	10-28-76	RN-SS
" "	4-12-82	GR-SS
" "	7-15-85	KEN CARLSON
" "	12-9-86	GR-SS
" "	12-23-91	KZ-SS
ALL OK	12-11-96	JG
OK	1-09-02	ML

CERTIFIED CORRECT:

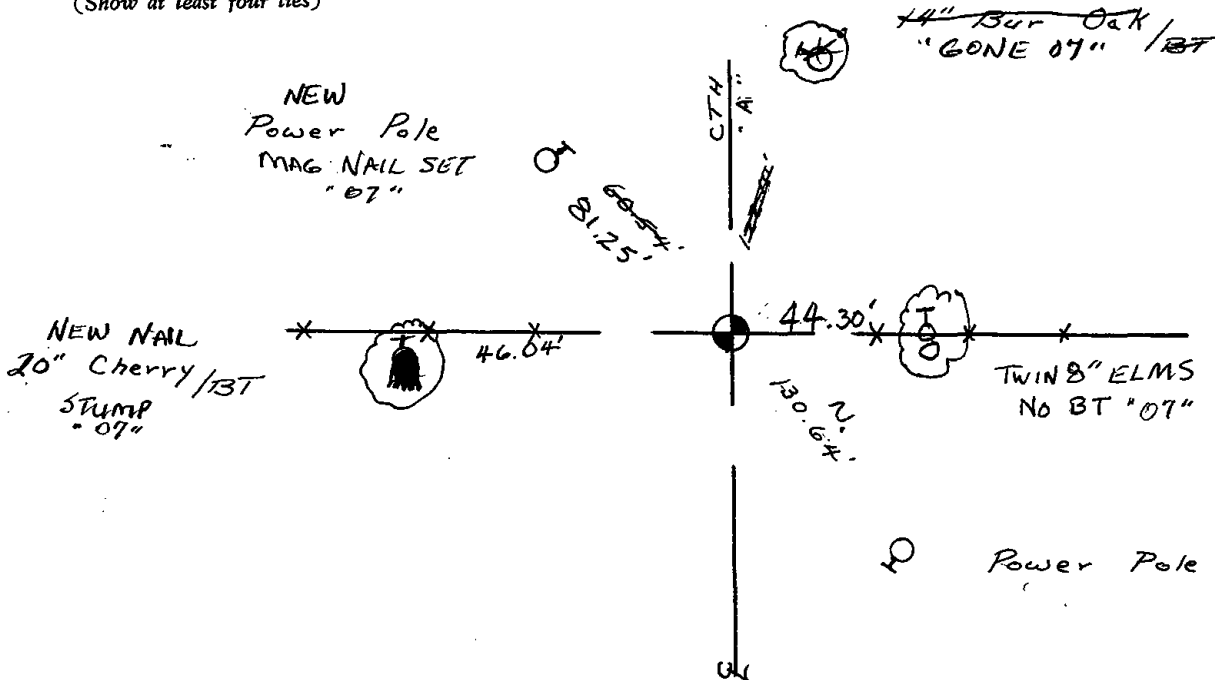
Dale C. Hagen

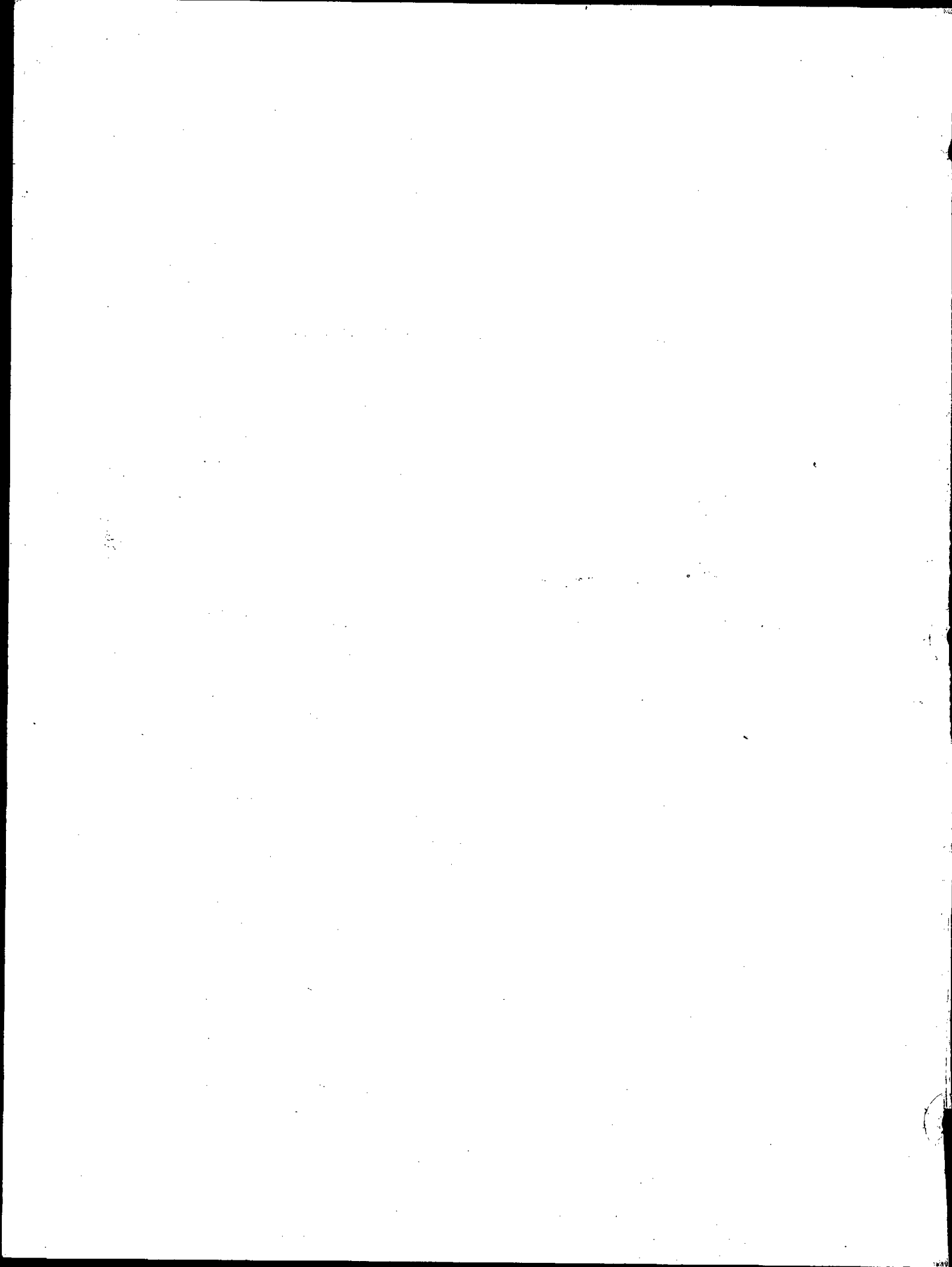
Registered Land Surveyor

DATE: 6/3/76

TIE SKETCH 3-GONE, 3-NEW. 6-20-07 - JG / ALSO SEE TIE SHEET BY CENTRAL STAKING, INC. JULY 2006 ON THE BACK SIDE

(Show at least four ties)



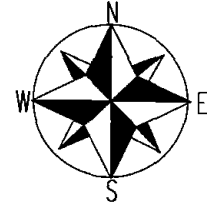
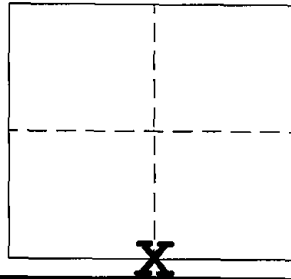


**ADAMS COUNTY
GOVERNMENT LAND CORNER CERTIFICATE**

CORNER NO. (130)

SECTION 35
TOWN 16 NORTH
RANGE 7 EAST

TYPE OF MONUMENT: STANDARD HARRISON
A.C.C.S COORDINATES N: 164759.54
E: 581179.82



ELEV. M.S.L. DATUM:
THETA ANGLE:
FIELD BOOK: PAGE:
DRAWN BY: KELLY D. CALLAWAY

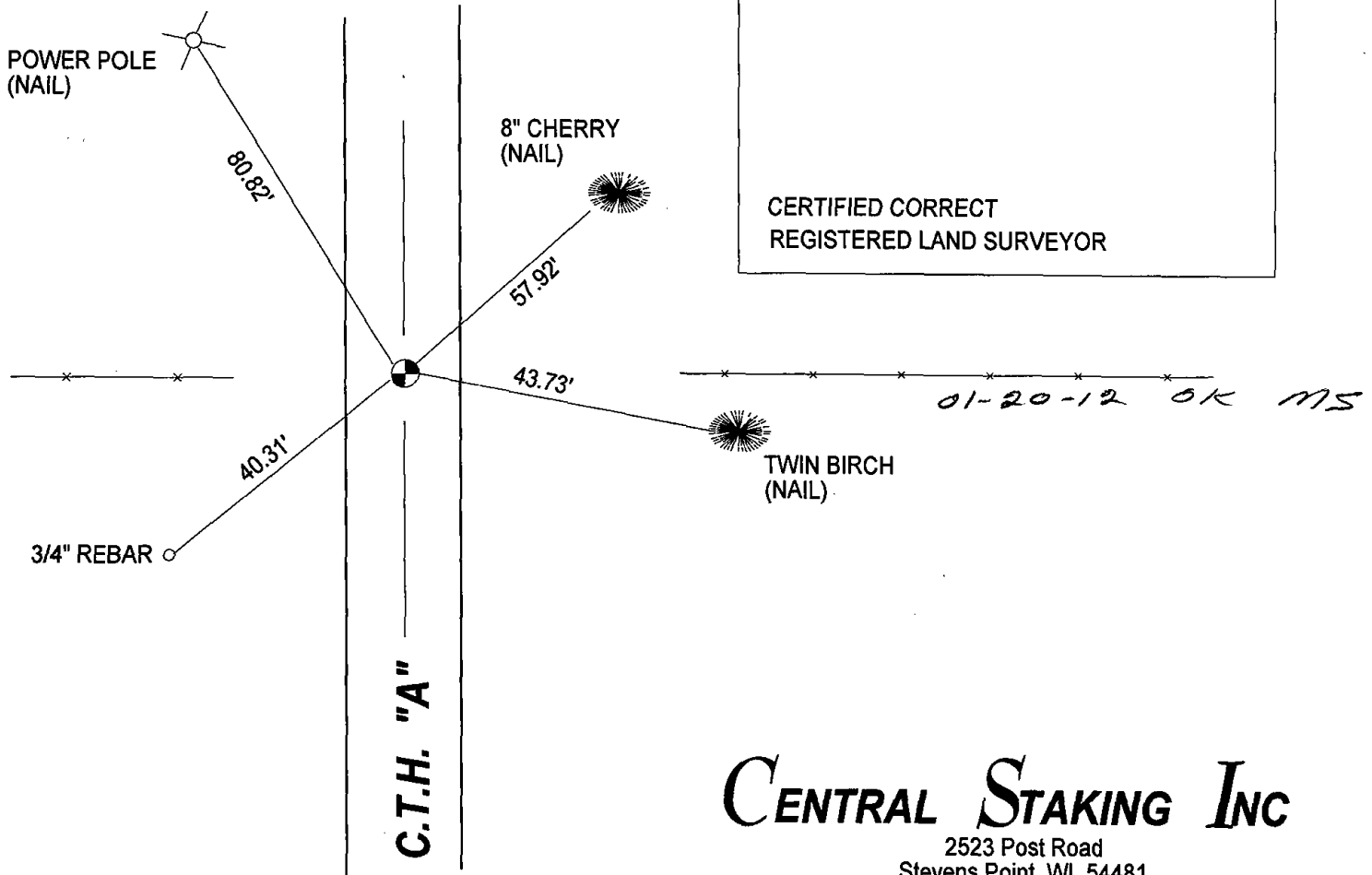
BASIS FOR CORNER LOCATION

Dale C. Hagen: Set Harrison by using existing fence lines to West and East as best available evidence.

July of 2006 I located and tied to this corner which was then taken out due to road construction. I then replaced corner with a Harrison monument after completion of road and set new ties as shown.

SEAL

CERTIFIED CORRECT
REGISTERED LAND SURVEYOR



CENTRAL STAKING INC

2523 Post Road
Stevens Point, WI 54481
Office: 715-345-6904 Fax: 715-345-7728