

LAND CORNER MONUMENT INDEX

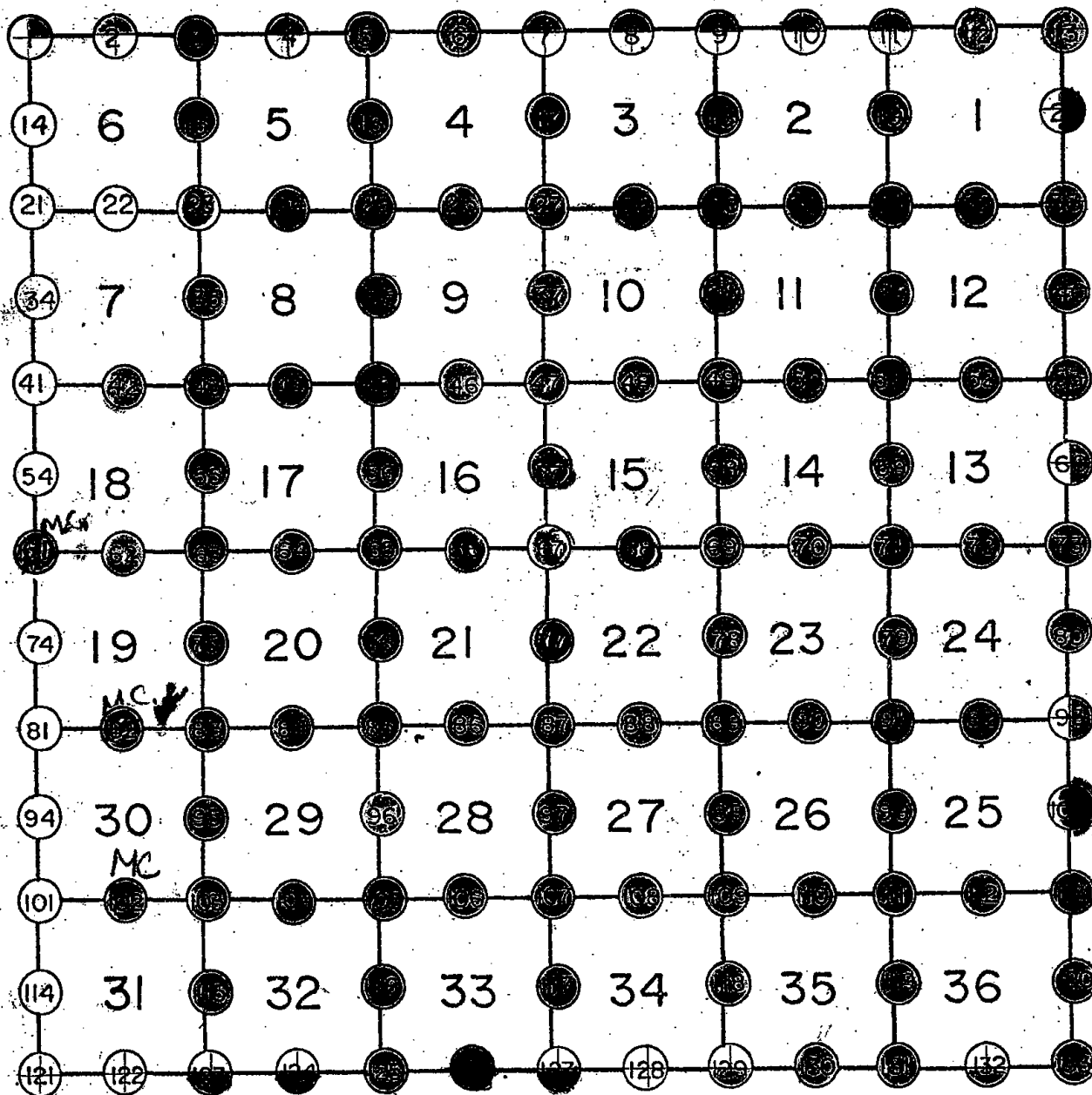
TOWN 17

RANGE 5

⊕ Corner Monumented
Tie Sheet Filed in Adjoining
Township as Indicated

● Corner Monumented
Tie Sheet In This Book

○ Corner May or May Not
Be Monumented -- No Ties





003

Government Land Corner Certificate

ADAMS County

TYPE OF MONUMENT: HARRISON

STATE PLANE COORDINATES: N _____
E _____

ELEVATION — M.S.L. DATUM: _____

THETA ANGLE: _____

FIELD BOOK: 101 PAGE 75

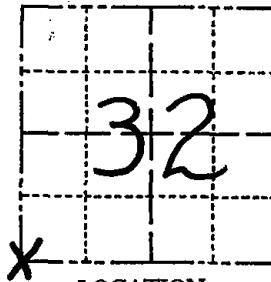
DRAWN BY: R.V.

CORNER NO. 3

SECTION 32

TOWN 18

RANGE 5



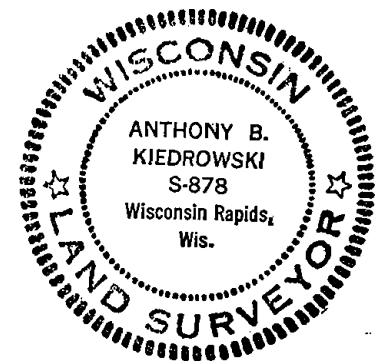
LOCATION
(Indicated by 'X')

BASIS FOR MONUMENT LOCATION

Show info such as: History of corner, with reference to Vol. and pg., dates, surveyor; exact description of monument replaced; if location computed, by taped or EDM traverse; landowner remarks, etc. (Use reverse side if necessary)

Initially used the Harrison monument set by Sam Mullen from a concrete reference monument. (see sketch) After running a complete traverse of Sec. 32, I was certain that the Harrison monument was in an erroneous location by approximately 66 feet. Using the tie to the corner called for from a cemetery to the south, I excavated with a backhoe. Found nothing. After doing further investigation, such as the tie to the corner from the railroad map, I excavated further for the stone called for by M.C. Smith in his plats of Holmsville. Again found nothing. I then dug for the stone forty corner he called for in the Holm's addition. This I found. I then remeasured and ~~xxx~~ excavated further and immediately found the stone marking the SW corner of Sec. 32. 65.04' south of Mullen's Harrison. (over for more detail)

SEAL:



DATA SHOWN HERE ON
CERTIFIED CORRECT:

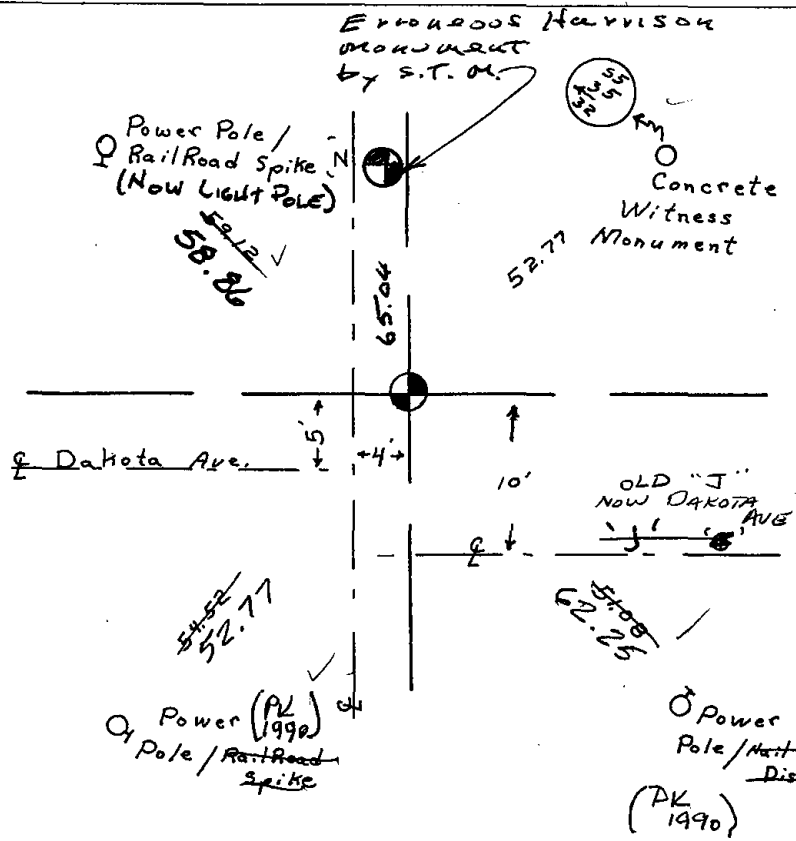
Anthony B. Kiedrowski
Registered Land Surveyor

DATE: 4/27/77

TIE SKETCH

Show at least four ties, also fence lines, roads, topo, size and type of witness trees' and if off road - best way to arrive at corner.

OK 11-17-78 RU-SS
OK 5/29/85 D.K.



MAINTENANCE RECORD

Date	Init.	Remarks
1-30-90	KZ-SS	3 New
8-17-94	JG-SS	OK
11-27-00	JG-SS	OK
2-15-05	DA/JG	OK

Basis for corner (con't)

The stone found was an 8 x 5" sandstone(white) . I broke the top 7" off when I hit it with the backhoe. The remainder of the stone remained in place. The stone in place was witnessed by William Ryman, Adams County Zoning Administrator. I left the bottom part of the stone undisturbed and in place and set a Harrison monument on top.. I put the broken off part of the stone along the north side of the bottom of the Harrison. The stone had a drill hole in it.

See file 32-18-5 for Mr. Ryman's affidavit regarding his witnessing the excavation of the stone.

In his tie from the stone to the corner of Holm's Addition, M.C.Smith has an erroneous dimension of N 10° W 156½ links. I believe this should have been N 10° W 256½ links. This will then get a dimension of 33'± from the stone to the west line of CTH "Z", which is what he obviously intended.