

32
SECTION

18
TOWN

05
RANGE

ADAMS COUNTY

COUNTY CORNER NO: 125

ROMPORTOL ID: 41805320000

PUBLIC LAND SURVEY MONUMENT RECORD

TYPE OF MONUMENT: HARRISON
ADAMS COUNTY COORDINATES, NAD 83 (2007)

N. 224105.256

E. 504579.786

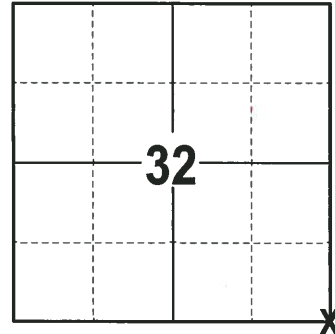
ELEVATION- DATUM

FIELD WORK DATE: 12/19/2017

BASIS FOR MONUMENT LOCATION

1972 - PLS 878 LOCATION DETERMINED FROM DATA GATHERED IN PARTIAL TRAVERSE OF SECTION 5. SET A 30" HARRISON MONUMENT AT THE CALCULATED LOCATION AND TIED OUT.

2017 - PLS 2994 FOUND A HARRISON MONUMENT IN THE ROAD SURFACE. FOUND NO EVIDENCE OF ANY TIES OR WITNESSES. ACCEPTED THE HARRISON MONUMENT AS THE BEST EVIDENCE OF THE CORNER LOCATION. SET 4 NEW TIES AND MEASURED TO THE TIES.



LOCATION
(INDICATE CORNER BY "X")

SEAL:



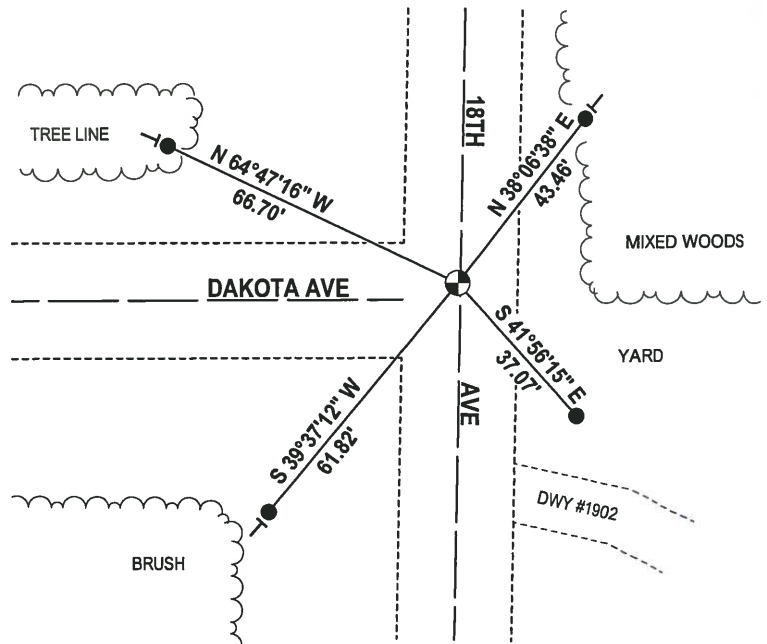
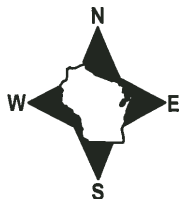
DATA SHOWN HERE ON THIS TIE SHEET IS CORRECT AND COMPLETE TO THE BEST OF MY KNOWLEDGE AND BELIEF.

PROFESSIONAL LAND SURVEYOR

DATE 1-4-18

- TIE SKETCH

NOTE: THE CORNER FALLS 4± NORTH OF THE CENTERLINE OF DAKOTA AVE AND 0.5± WEST OF THE CENTERLINE OF 18TH AVE.



- 3/4" x 18" IRON REBAR SET, 1.50#/FT
- ⊕ HARRISON FOUND
- VINYL "T" POST

ADAMS COUNTY

Survey Monument Record

TYPE OF MONUMENT: 30" HARRISON

STATE PLANE COORDINATES: N _____ E _____

ELEVATION — M.S.L. DATUM: _____

THETA ANGLE: _____

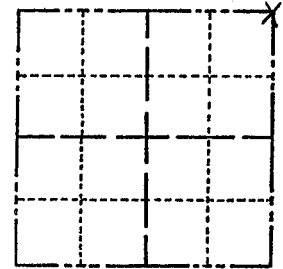
FIELD BOOK: 106? PAGE ?

CORNER NO. 150

SECTION 5

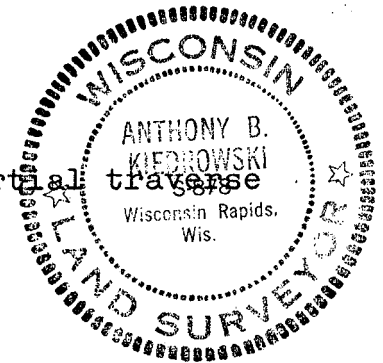
TOWN 17

RANGE 5



LOCATION (Indicated by 'X')

SEAL:



BASIS FOR MONUMENT LOCATION

(Use reverse side if necessary)

Show info such as: History of corner, with reference to Vol. and pg, dates, surveyor; exact description of monument replaced; if location computed, by taped or EDM traverse; landowner remarks, etc.

Set 30" Harrison monyment on July 10, 1972.

set by Anthony b. Kiedrowski R.L.S. 878

Location determined from data gathered in partial traverse of section 5.

OK 1-20-00 SJS
ALL OK 8-17-94 JG-SS
1-GONE - 4-REMAIN 1-30-90 KZ-SS
CORNER O.K. 11-6-75 D.M. - S.S.
TIES + COR OK BS-KV 9/29/80
CORNER OK 5/28/85 DK
1-GONE, 1-NEW 5-20-03 - JG-SS

CERTIFIED CORRECT:

Anthony B. Kiedrowski
Registered Land Surveyor

DATE: 1-27-73

TIE SKETCH

(Show at least four ties)

