

33 SECTION 18 TOWN 05 RANGE

ADAMS COUNTY

COUNTY CORNER NO: 126
ROMPORTOL ID: 41805330020

PUBLIC LAND SURVEY MONUMENT RECORD

TYPE OF MONUMENT: HARRISON
ADAMS COUNTY COORDINATES, NAD 83 (2007)

N. 224099.265

E. 507212.575

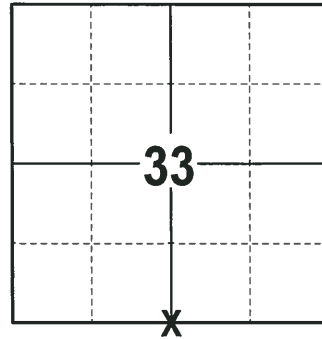
ELEVATION- _____ DATUM _____

FIELD WORK DATE: 12/19/2017

BASIS FOR MONUMENT LOCATION

1979 - PLS 1478 ACCEPTED EXISTING FENCE CORNER AS THE QUARTER CORNER. THIS POINT FALLS VERY NEAR THE ORIGINAL RECORD DISTANCE FROM THE NW CORNER OF SECTION 4-17-5 AND VERY CLOSE TO THE LINE BETWEEN THE NW CORNER AND THE NE CORNER OF SECTION 4-17-5. NO EVIDENCE OF ANY PREVIOUS MONUMENTATION OTHER THAN THE FENCE CORNER. IN NOV. 1890 M.C. SMITH USED THIS CORNER BUT DOES NOT INDICATE ANY BEARING TREES OR MONUMENT. SMITH'S SURVEY IS IN VOLUME 1 PAGE 99 OF THE ADAMS COUNTY SURVEYOR RECORDS. SET A HARRISON MONUMENT AT THE CALCULATED LOCATION AND TIED OUT.

2017 - PLS 2994 FOUND A HARRISON MONUMENT 4" ABOVE THE GROUND SURFACE. FOUND NO EVIDENCE OF ANY TIES OR WITNESSES. ACCEPTED THE HARRISON MONUMENT AS THE BEST EVIDENCE OF THE CORNER LOCATION. SET 4 NEW TIES AND MEASURED TO THE TIES.



LOCATION
(INDICATE CORNER BY "X")

SEAL:

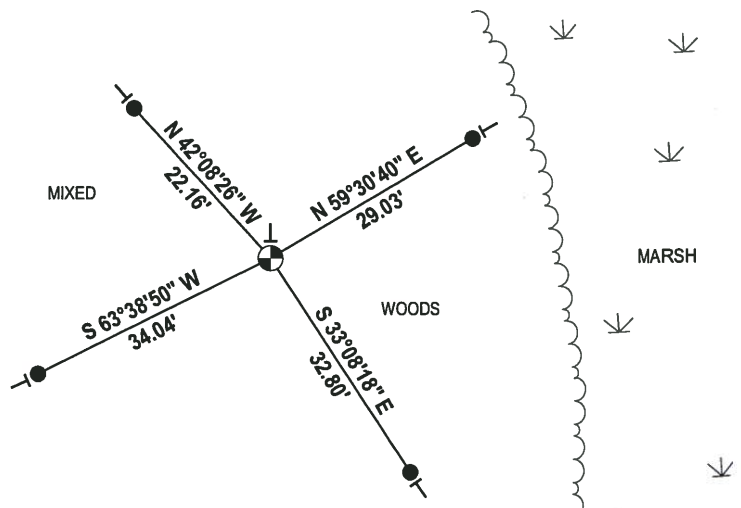
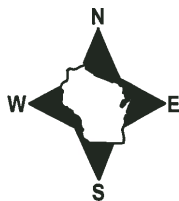


DATA SHOWN HERE ON THIS TIE SHEET IS CORRECT AND COMPLETE TO THE BEST OF MY KNOWLEDGE AND BELIEF.

PROFESSIONAL LAND SURVEYOR

DATE 1-4-18

- TIE SKETCH

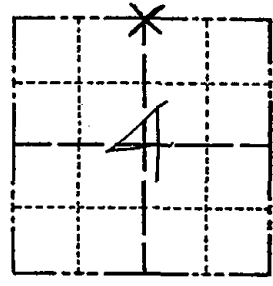


- 3/4" x 18" IRON REBAR SET, 1.50#/FT
- ⊕ HARRISON FOUND
- VINYL "T" POST

Government Land Corner Certificate

ADAMS County
 TYPE OF MONUMENT: HARRISON
 STATE PLANE COORDINATES: N _____
 E _____
 ELEVATION — M.S.L. DATUM: _____
 THETA ANGLE: _____
 FIELD BOOK: 80 PAGE 34
 DRAWN BY: G. RHINEHART

CORNER NO. 6
 SECTION 4
 TOWN 17
 RANGE 5



LOCATION
 (Indicated by 'X')

BASIS FOR MONUMENT LOCATION

Show info such as: History of corner, with reference to Vol. and pg., dates, surveyor; exact description of monument replaced; if location computed, by taped or EDM traverse; landowner remarks, etc. (Use reverse side if necessary)

Accepted existing fence corner as the Quarter Corner. This point falls very near to original record distance from the NW corner of Section 4-17-5 and very close to line between the NW corner and the NE Corner of Section 4-17-5. No evidence of any previous monumentation other than the fence corner. In Nov. 1980 M.C. Smith used this corner but does not indicate any bearing trees or monument. Smith's survey is in Volume 1 page 99 of the Adams County Surveyor Records.

SEAL:



DATA SHOWN HERE ON
 CERTIFIED CORRECT:

Gregory P. Rhinehart
 Registered Land Surveyor

DATE: 12/21/79

ALL OK 1-90 SS
 ALL 8-17-94 JG-SS
 OK 1-20-00 STE -
 1-GONE 1-NEW 5-20-03-JG
 OK 2-24-10 SS - WIND DAMAGE ± 50' N-NE

TIE SKETCH

Show at least four ties, also fence lines, roads, topo, size and type of witness trees and if off road - best way to arrive at corner.

