

## PUBLIC LAND SURVEY MONUMENT RECORD

TYPE OF MONUMENT: RAILROAD SPIKE  
 ADAMS COUNTY COORDINATES, NAD 83 (2007)

N. 221256.988

E. 499341.679

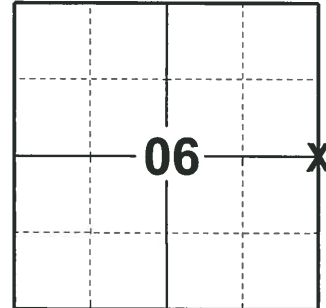
ELEVATION- - - - DATUM - - - -

FIELD WORK DATE: 01/15/2019

### BASIS FOR MONUMENT LOCATION

1971 - PLS 981 FOUND IRON PIPE AND "RR" SPIKE AND SET HARRISON MONUMENT

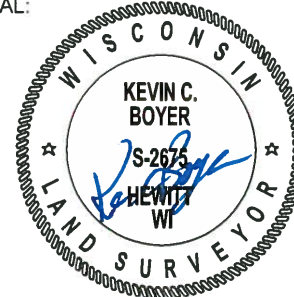
2019 - PLS 2675 FOUND RAILROAD SPIKE 3" BELOW ROAD SURFACE AND 1 WITNESS. THE MONUMENT AGREES WITH THE WITNESS. ACCEPTED THE RAILROAD SPIKE AS THE CORNER. SET 4 NEW TIES AND MEASURED TO THE EXISTING WITNESS.



**LOCATION**

(INDICATE CORNER BY "X")

SEAL:



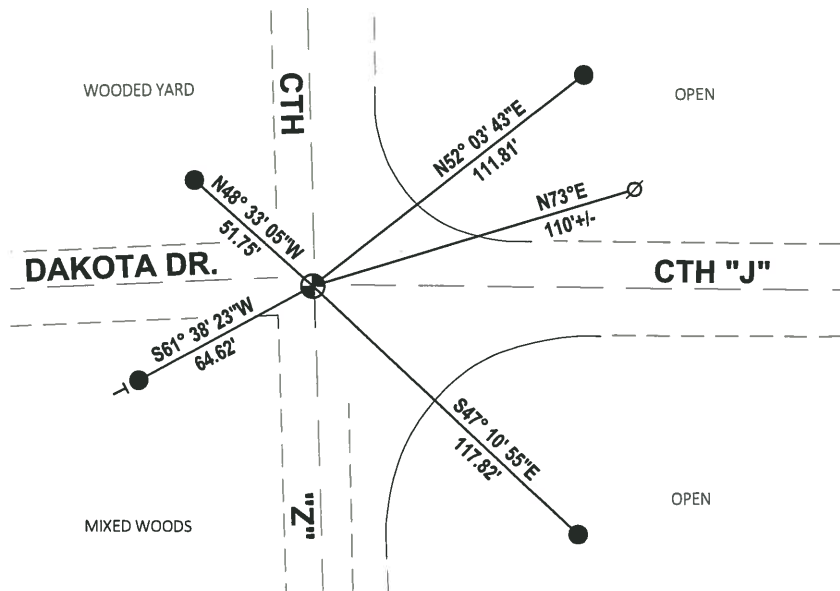
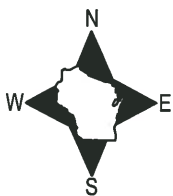
DATA SHOWN HERE ON THIS TIE SHEET IS CORRECT AND COMPLETE TO THE BEST OF MY KNOWLEDGE AND BELIEF.

PROFESSIONAL LAND SURVEYOR

DATE 3/12/19

### - TIE SKETCH

NOTE: THE CORNERS LANDS 0.50'± WEST OF CENTERLINE OF CTH "Z"



- SET 3/4" x 18" IRON REBAR, 1.50#/FT
- ⊕ FOUND RAILROAD SPIKE
- ∅ WITNESS POWER POLE
- VINYL "T" POST

Section 5 Town 17 Range 5

County Corner No. 15

Romportol ID 41705062000

# ADAMS COUNTY

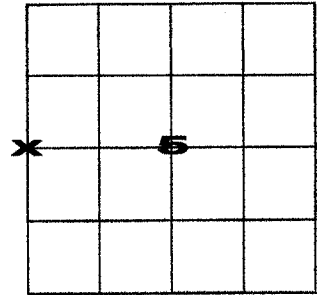
## PUBLIC LAND SURVEY MONUMENT RECORD

Type of Monument Harrison

Adams County Coordinates (NAD 83, 2011)

Northing 221234.512

Easting 499350.519

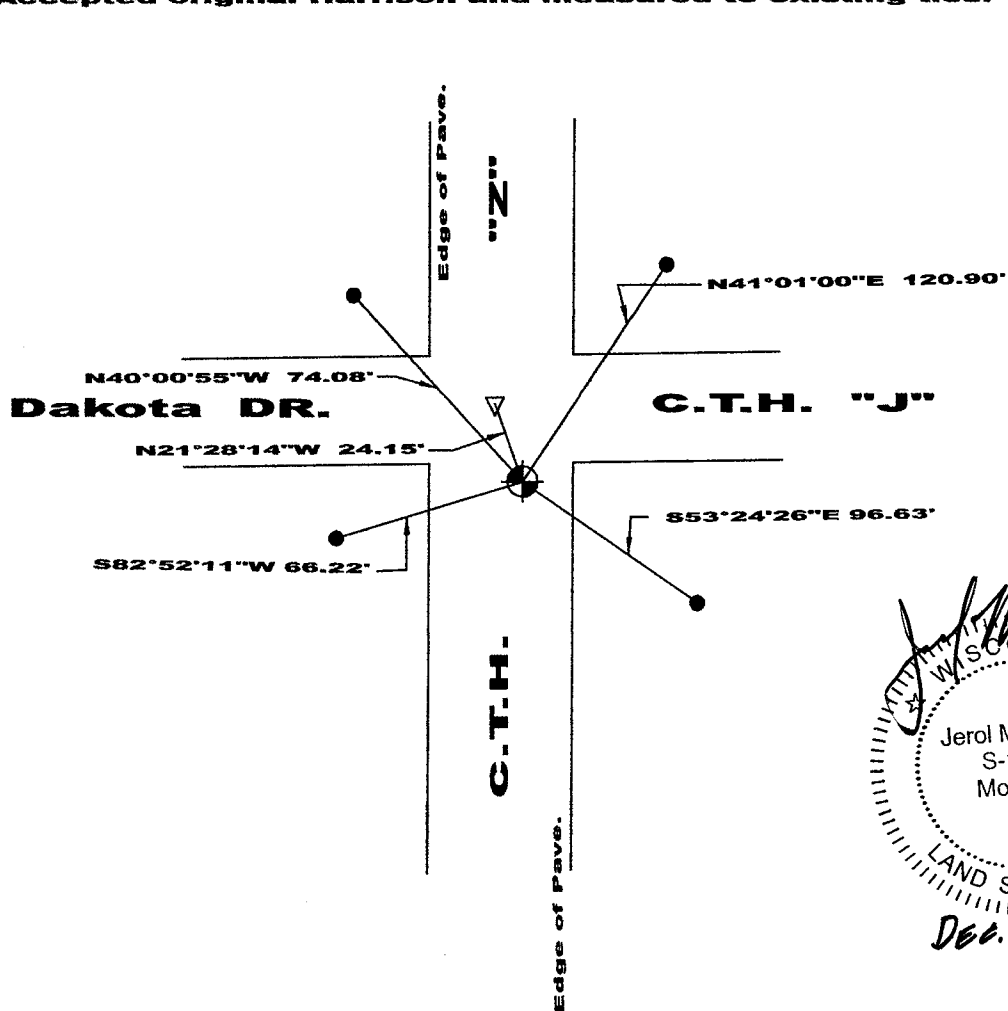


### Corner History and Basis for Location

1971 - PLS 981 set Harrison monument and ties.

2019 - PLS 2675 found and excepted railroad spike and set four new ties.

2022 - PLS 1739 found broken Harrison mon. below road surface south of RR spike. Accepted original Harrison and measured to existing ties.



*[Signature]*  
 WISCONSIN  
 Jerol M. Smart  
 S-1739  
 Montello  
 WI  
 LAND SURVEYOR  
 Dec. 22, 2022

- Found broken Harrison monument
- Found 3/4" rebar
- ▽ Found railroad spike

I, Jerol M. Smart, P.L.S., Adams County Surveyor, do hereby certify that the information shown hereon is correct and that I have fully complied with Wisconsin Statutes and Admin. code to the best of my knowledge and belief.

# ADAMS COUNTY

## Survey Monument Record

TYPE OF MONUMENT: 30" HARRISON

STATE PLANE COORDINATES: N \_\_\_\_\_

E \_\_\_\_\_

ELEVATION — M.S.L. DATUM: \_\_\_\_\_

THETA ANGLE: \_\_\_\_\_

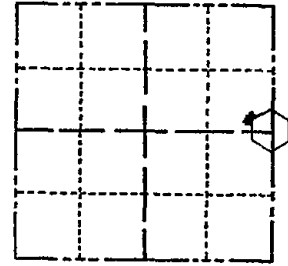
FIELD BOOK: 104 PAGE 57

CORNER NO. 25

SECTION 6

TOWN 17

RANGE 5



LOCATION  
(Indicated by 'X')

SEAL:

### BASIS FOR MONUMENT LOCATION

(Use reverse side if necessary)

Show info such as: History of corner, with reference to Vol. and pg, dates, surveyor; exact description of monument replaced; if location computed, by taped or EDM traverse; landowner remarks, etc.

Found iron pipe and "RR" spike and set monument

July 21, 1971

Sam T. Mullen R.L.S. S-981

OK 9-2-10 SS  
 OK 2-15-05 DA/JG  
 3 NEW TIES 11-27-00 JB-SS  
 CORNER 10-3-75  
 MON & TIES OK KU-SK 9/26/80  
 ALL OK 5/30/85 D.K  
 OK 1-30-90 KZ-SS  
 ALL OK 8-17-94 JG-SS

CERTIFIED CORRECT:

Registered Land Surveyor

DATE: \_\_\_\_\_

### TIE SKETCH

(Show at least four ties)

