

PUBLIC LAND SURVEY MONUMENT RECORD

TYPE OF MONUMENT: HARRISON (BROKEN-TOP)
 ADAMS COUNTY COORDINATES, NAD 83 (2007)

N. 218493.701

E. 504706.516

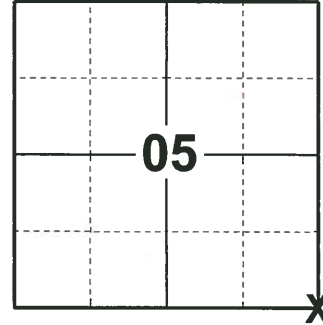
ELEVATION- - - - DATUM - - - -

FIELD WORK DATE: 01/10/2019

BASIS FOR MONUMENT LOCATION

1979 - PLS 1478 SET MONUMENT AT A SINGLE PROPORTIONATE DISTANCE BETWEEN THE N1/4 CORNER OF SECTION 8-17-5 AND THE S1/4 CORNER OF SECTION 3-17-5 AND ON THE E-W FENCE LINE. THIS LOCATION FALLS 70±' SOUTH OF ORIGINAL RECORD DISTANCE. DUE TO THE FACT THAT THE 12" WHITE OAK BEARING TREE WAS S12-1/2°W 449 LINKS. (296.34') HAVING THE CORNER 70' NORTH WOULD PLACE AN ALMOST SHEAR 20' CLIFF BETWEEN THE BEARING TREE AND THE CORNER. AN ORIGINAL DISTANCE PROPORTION BETWEEN ADJACENT CORNERS CAN NOT BE JUSTIFIABLE. IN A SURVEY, BY M.C. SMITH (VOL. 2 PAGE 23 - APRIL 1916), SMITH SEARCHED FOR THIS CORNER AND WAS UNABLE TO LOCATE IT. IN HIS NOTES HE MAKES NO MENTION OF MONUMENTATION NOR BEARINGS LEFT AT THIS LOCATION.

2019 - PLS 2675 FOUND HARRISON (BROKEN-TOP) 18" BELOW SURFACE AND 1 WITNESS TREE. THE MONUMENT AGREES WITH THE EXISTING WITNESS. ACCEPTED THE HARRISON (BROKEN-TOP) AS THE CORNER. SET 3 NEW TIES, MEASURED TO A FOUND PROPERTY IRON, AND MEASURED TO THE EXISTING WITNESS.



LOCATION

(INDICATE CORNER BY "X")

SEAL:

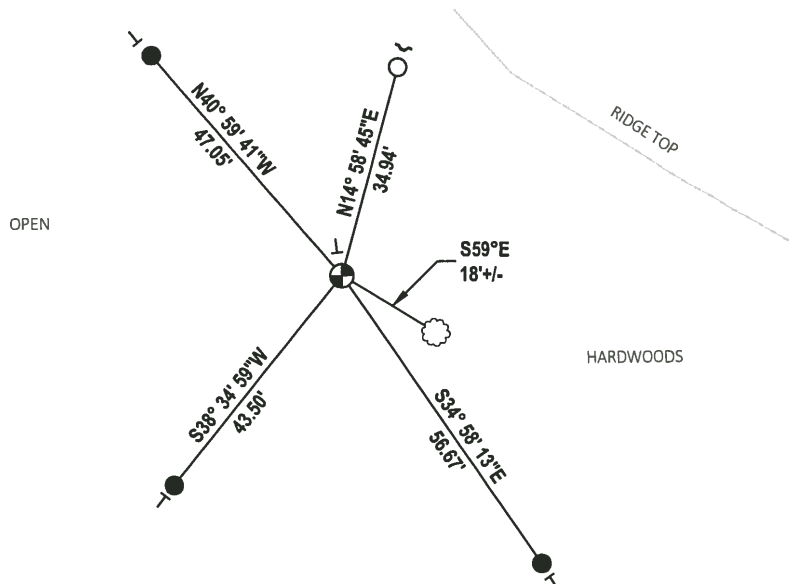
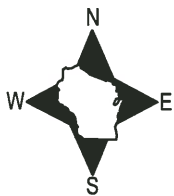


DATA SHOWN HERE ON THIS TIE SHEET IS CORRECT AND COMPLETE TO THE BEST OF MY KNOWLEDGE AND BELIEF.

PROFESSIONAL LAND SURVEYOR

DATE 3/12/19

- TIE SKETCH

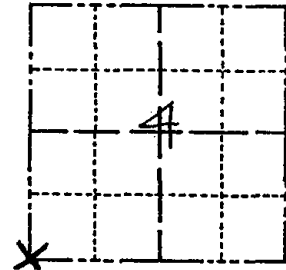


- SET 3/4" x 18" IRON REBAR, 1.50#/FT
- FOUND 3/4" IRON ROD
- ⊕ FOUND HARRISON MONUMENT (BROKEN-TOP)
- ┌ STEEL FENCE POST
- └ VINYL "T" POST
- ⊙ WITNESS TREE

Government Land Corner Certificate

ADAMS County
 TYPE OF MONUMENT: HARRISON
 STATE PLANE COORDINATES: N _____
 E _____
 ELEVATION — M.S.L. DATUM: _____
 THETA ANGLE: _____
 FIELD BOOK: 80 PAGE 33
 DRAWN BY: G. RHINEHART

CORNER NO. 25
 SECTION 4
 TOWN 17
 RANGE 5



LOCATION
(Indicated by 'X')

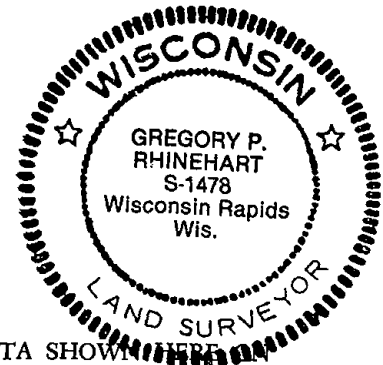
BASIS FOR MONUMENT LOCATION

Show info such as: History of corner, with reference to Vol. and pg., dates, surveyor; exact description of monument replaced; if location computed, by taped or EDM traverse; landowner remarks, etc. (Use reverse side if necessary)

Set monument at a single proportionate distance between the $N\frac{1}{4}$ corner of Section 8-17-5 and the $S\frac{1}{4}$ Corner of Section 3-17-5 and on the E-W fence line. This location falls 70±' south of original record distance. Due to the fact that the 12" Wh. Oak bearing tree was $S12\frac{1}{2}^{\circ}W$ 449 lks. (296.34') having the corner 70' north would place an almost shear 20' cliff between the bearing tree and the corner, I do not feel that an original distance proportion between adjacent corners would be justifiable. In a survey, by M. C. Smith (Vol. 2 page 23 - April 1916), Smith searched for this corner and was unable to locate it. In his notes he makes no mention of monumentation nor bearings left at this location.

ALL OK 7-8-85 DK
 1 NEW TIE 1-30-90
 ALL OK 8-17-94 JG-SS

SEAL:



DATA SHOWN ~~HERE~~
 CERTIFIED CORRECT:

Gregory P. Rhinehart
 Registered Land Surveyor

DATE: 12-21-79

TIE SKETCH 1-GONE, 4-LEFT 1-10-00 JG-SS
ALL OK, 2-11-05 JG-DA SWAMP

Show at least four ties, also fence lines, roads, topo, size and type of witness trees and if off road - best way to arrive at corner.
 OK 2-24-10 SS

