

02 SECTION 17 TOWN 05 RANGE

# ADAMS COUNTY

COUNTY CORNER NO: 31  
ROMPORTOL ID: 4170502000

## PUBLIC LAND SURVEY MONUMENT RECORD

TYPE OF MONUMENT: HARRISON  
ADAMS COUNTY COORDINATES, NAD 83 (2007)

N. 218689.197

E. 520453.490

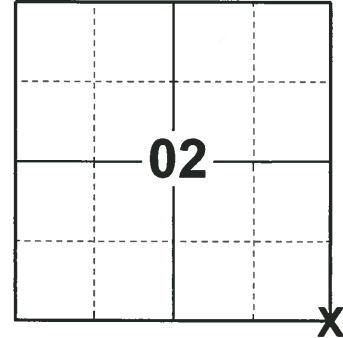
ELEVATION- \_\_\_\_\_ DATUM \_\_\_\_\_

FIELD WORK DATE: 12/19/2018

### BASIS FOR MONUMENT LOCATION

1974 - PLS 878 EXCAVATED WITH A BACKHOE AND FOUND A 4" X 6" X 10" GRANITE BOULDER. BELOW THAT WAS A 1" X 30" IRON PIPE. LEFT IRON PIPE AND STONE IN PLACE AND SET A HARRISON MONUMENT. TIED OUT CORNER.

2018 - PLS 2675 FOUND A HARRISON MONUMENT 3" BELOW ROAD SURFACE AND 2 TIES. THE MONUMENT AGREES WITH THE EXISTING TIES. ACCEPTED THE HARRISON MONUMENT AS THE CORNER LOCATION. SET 2 NEW TIES AND MEASURED TO THE TIES.



**LOCATION**

(INDICATE CORNER BY "X")

SEAL:



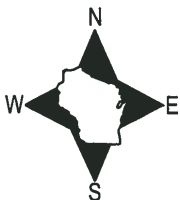
DATA SHOWN HERE ON THIS TIE SHEET IS CORRECT AND COMPLETE TO THE BEST OF MY KNOWLEDGE AND BELIEF.

PROFESSIONAL LAND SURVEYOR

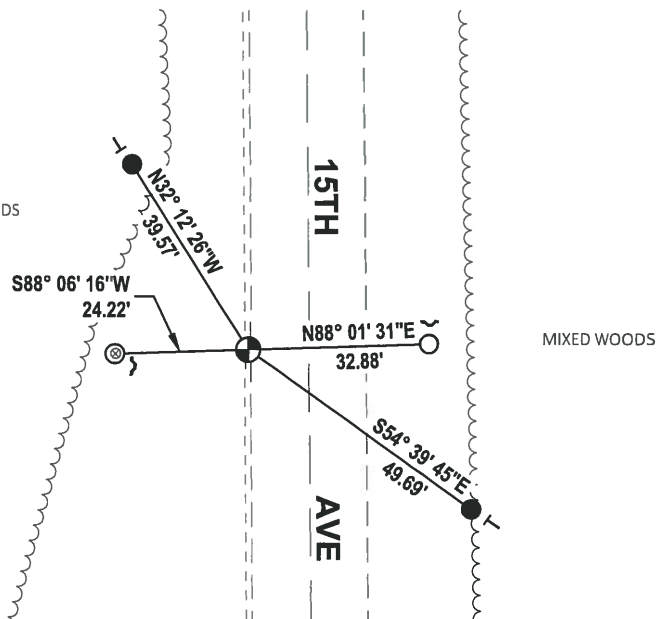
DATE 1-18-19

### TIE SKETCH

NOTE: THE CORNER LANDS 11± WEST OF THE CENTERLINE OF 15TH AVE.



MIXED WOODS



- SET 3/4" x 18" IRON REBAR, 1.50#/FT
- FOUND 3/4" IRON ROD
- ⊗ FOUND 1-1/2" O.D. IRON PIPE
- ⊕ FOUND HARRISON MONUMENT
- ⌋ STEEL FENCE POST
- ⊥ VINYL "T" POST

ADAMS COUNTY

Survey Monument Record

TYPE OF MONUMENT: Harrison Standard

STATE PLANE COORDINATES: N \_\_\_\_\_

E \_\_\_\_\_

ELEVATION -- M.S.L. DATUM: \_\_\_\_\_

THETA ANGLE: \_\_\_\_\_

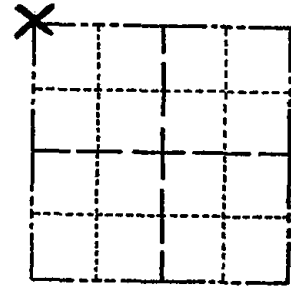
FIELD BOOK: \_\_\_\_\_ PAGE \_\_\_\_\_

CORNER NO. 420 <sup>(31)</sup>

SECTION 12

TOWN 17

RANGE 5



LOCATION  
(Indicated by 'X')

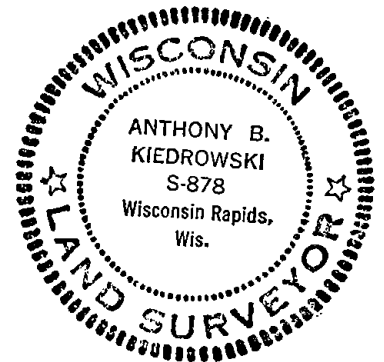
SEAL:

BASIS FOR MONUMENT LOCATION

(Use reverse side if necessary)

Show info such as: History of corner, with reference to Vol. and pg, dates, surveyor; exact description of monument replaced; if location computed, by taped or EDM traverse; landowner remarks, etc.

Excavated with backhoe. Found 4" x 6" x 10" granite boulder. Below that was a 1" x 30" iron pipe. Left iron pipe and stone in place and set Harrison monument on top.



COR. O.K. 10-11-75 SS

MON BEEPS RH-TM 8/9/80

2 Ties Gone, 1 New

5/30/85 DK

OK 1-29-90 KZ-SS

OK 88-94 CR-JG  
12-28-99 SS

CERTIFIED CORRECT:

*Anthony B. Kiedrowski*  
Registered Land Surveyor

DATE: July 31, 1974

1-GONE, 3-NEW, 2-7-05-JG

TIE SKETCH <sup>OK 2-12-10 SS</sup> All ties to nail and disc.

(Show at least four ties)

