

PUBLIC LAND SURVEY MONUMENT RECORD

TYPE OF MONUMENT: HARRISON
ADAMS COUNTY COORDINATES, NAD 83 (2007)

N. 213284.061

E. 499421.077

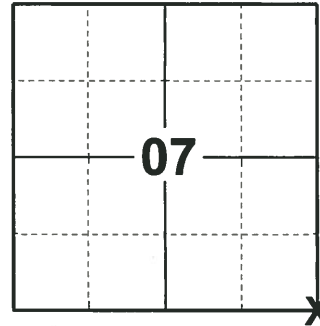
ELEVATION- - - - DATUM - - - -

FIELD WORK DATE: 01/16/2019

BASIS FOR MONUMENT LOCATION

1975 - PLS 1103 RETRACED SURVEY BY FRED ZIETLOW IN THE SW1/4 OF THE NW1/4 OF SECTION 17 AND SET HARRISON BY DOUBLING OVER THE WEST LINE OF THE SW1/4 OF THE NW1/4 OF SECTION 17.

2019 - PLS 2675 FOUND HARRISON MONUMENT 3" BELOW THE GROUND, 1 TIE, AND 2 WITNESSES. THE MONUMENT AGREES WITH THE TIE AND WITNESSES. ACCEPTED THE HARRISON AS THE CORNER. SET 1 NEW TIE. MEASURED TO 3 FOUND RW IRONS, EXISTING TIE, AND WITNESSES.



LOCATION

(INDICATE CORNER BY "X")

SEAL:



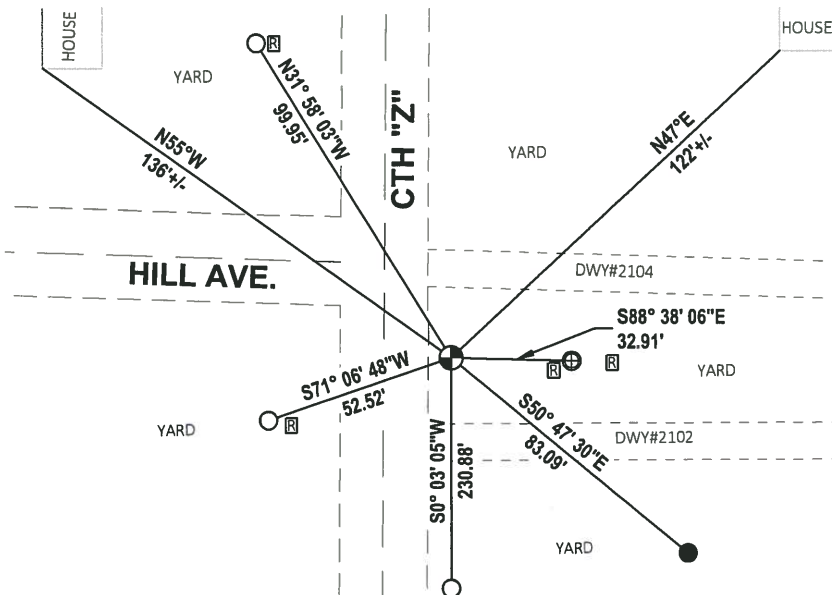
DATA SHOWN HERE ON THIS TIE SHEET IS CORRECT AND COMPLETE TO THE BEST OF MY KNOWLEDGE AND BELIEF.

PROFESSIONAL LAND SURVEYOR

DATE 3/12/19

TIE SKETCH

NOTE: THE CORNER LANDS 18'± EAST OF CENTERLINE OF CTH "Z"



- SET 3/4" x 18" IRON REBAR, 1.50#/FT
- FOUND 3/4" IRON ROD
- ⊕ FOUND 1.0" O.D. IRON PIPE
- ⊙ FOUND HARRISON MONUMENT
- ⊠ RW POST

ADAMS COUNTY

Survey Monument Record

TYPE OF MONUMENT: Harrison Monument

STATE PLANE COORDINATES: N _____

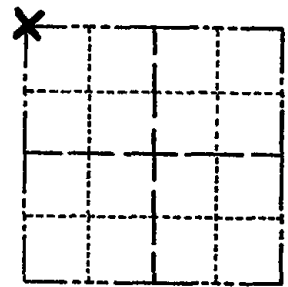
E _____

ELEVATION — M.S.L. DATUM: _____

THETA ANGLE: _____

FIELD BOOK: _____ PAGE _____

CORNER NO. 708 43
 SECTION 17
 TOWN 17
 RANGE 5



LOCATION
(Indicated by 'X')

SEAL:

BASIS FOR MONUMENT LOCATION

(Use reverse side if necessary)

Show info such as: History of corner, with reference to Vol. and pg, dates, surveyor; exact description of monument replaced; if location computed, by taped or EDM traverse; landowner remarks, etc.

Retraced survey by Fred Zietlow in the SW $\frac{1}{4}$ of the NW $\frac{1}{4}$ of Section 17 and set corner by doubling over the West line of the SW $\frac{1}{4}$ of the NW $\frac{1}{4}$ of Section 17.

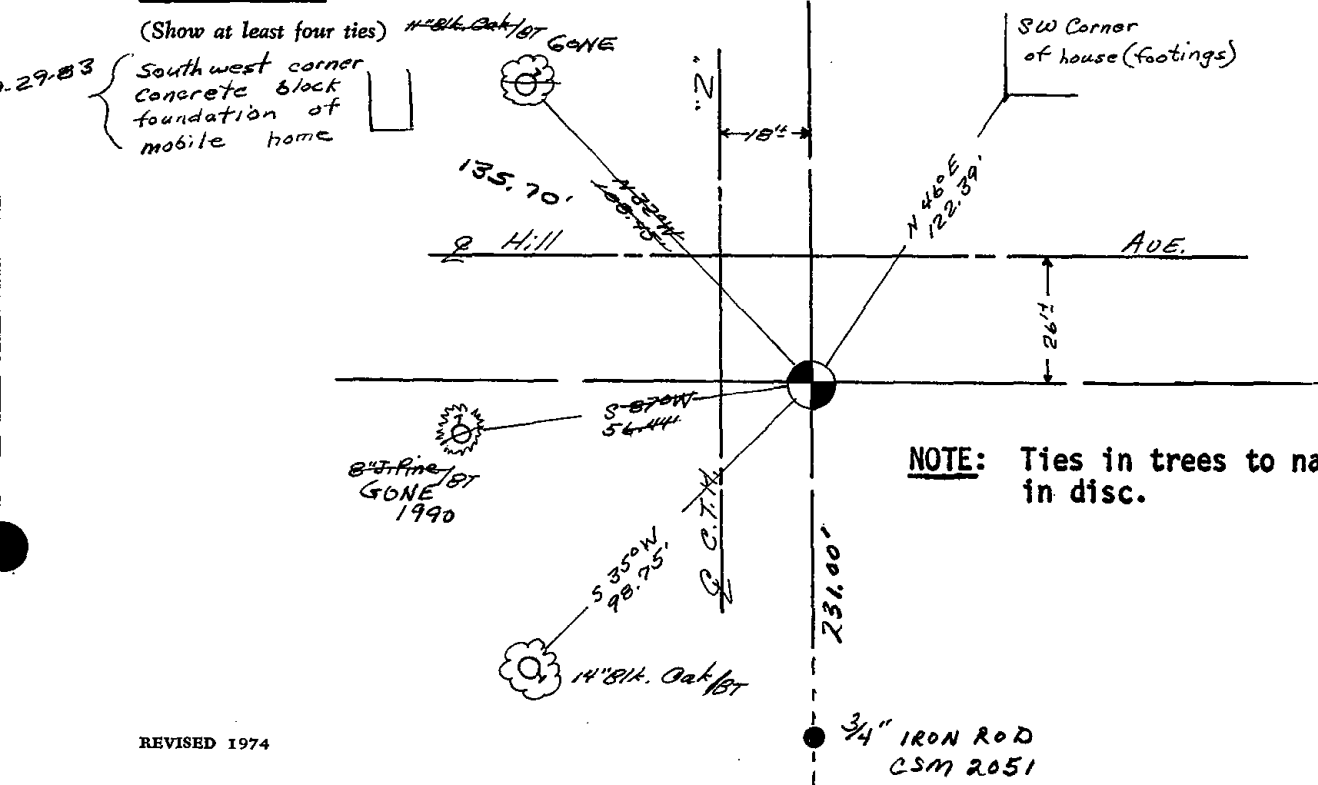
MOX BEEPS & TIES OK KU-SK 9/26/80
 ALL OK 5/30/85 DK
 1-GONE SEE CSM 2051 3-90 SS
 ALL OK 8-24-94 JG-SS
 ALL OK 1-10-00, JG-SS
 OK 2-15-05 DA/JG
 OK 9-2-10 SS



CERTIFIED CORRECT.
Dale C. Hagen
 Registered Land Surveyor
 DATE: 6/3/75

TIE SKETCH

(Show at least four ties)



NOTE: Ties in trees to nail in disc.

