

PUBLIC LAND SURVEY MONUMENT RECORD

TYPE OF MONUMENT: HARRISON
 ADAMS COUNTY COORDINATES, NAD 83 (2007)

N. 213227.745

E. 502050.750

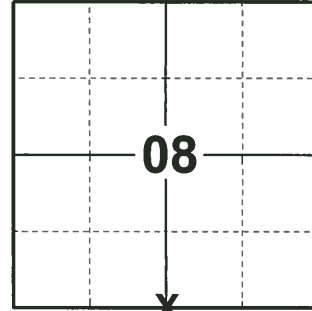
ELEVATION- - - - DATUM - - - -

FIELD WORK DATE: 01/07/2019

BASIS FOR MONUMENT LOCATION

1975 - PLS 1103 RAN EDM/TRANSIT TRAVERSE AROUND SECTION 17, TOWN 17 NORTH RANGE 5 EAST. FOUND ANCIENT 3/4" SQUARE IRON BAR. ACCEPTED SAME AS CORNER. SET HARRISON MONUMENT.

2019 - PLS 2675 FOUND HARRISON 3" BELOW THE WATER LINE AND 3 WITNESS TREES. THE MONUMENT AGREES WITH ALL 3 WITNESS TREES. ACCEPTED THE HARRISON AS THE CORNER. SET 4 NEW TIES AND MEASURED TO THE EXISTING WITNESS TREES.



LOCATION

(INDICATE CORNER BY "X")

SEAL:



DATA SHOWN HERE ON THIS TIE SHEET IS CORRECT AND COMPLETE TO THE BEST OF MY KNOWLEDGE AND BELIEF.

PROFESSIONAL LAND SURVEYOR

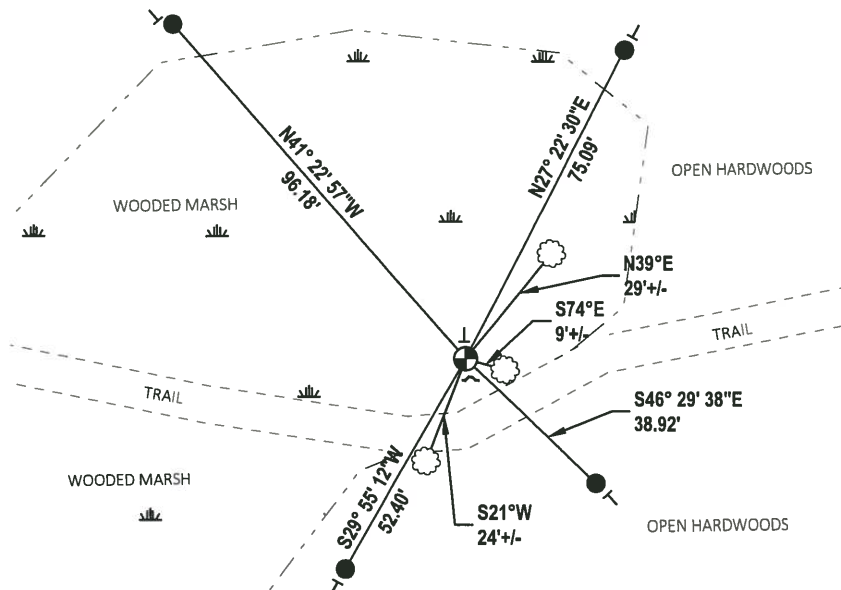
DATE 3/12/19

TIE SKETCH

NOTE: THE CORNER LANDS 13'± NORTHWEST OF THE TRAIL



- SET 3/4" x 18" IRON REBAR, 1.50#/FT
- ⊙ FOUND HARRISON MONUMENT
- ~ STEEL FENCE POST
- ⊥ VINYL "T" POST
- ⊙ WITNESS TREE



ADAMS COUNTY

Survey Monument Record

TYPE OF MONUMENT: Standard Harrison Monument

STATE PLANE COORDINATES: N _____

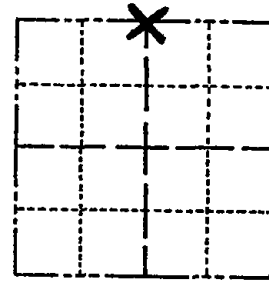
E _____

ELEVATION — M.S.L. DATUM: _____

THETA ANGLE: _____

FIELD BOOK: _____ PAGE _____

CORNER NO. 709 (44)
SECTION 17
TOWN 17
RANGE 5



LOCATION
(Indicated by 'X')

SEAL:

BASIS FOR MONUMENT LOCATION

(Use reverse side if necessary)

Show info such as: History of corner, with reference to Vol. and pg, dates, surveyor; exact description of monument replaced; if location computed, by taped or EDM traverse; landowner remarks, etc.

Ran EDM/transit traverse around Section 17, Town 17N, Range 5E.

Found ancient 3/4" square iron bar.

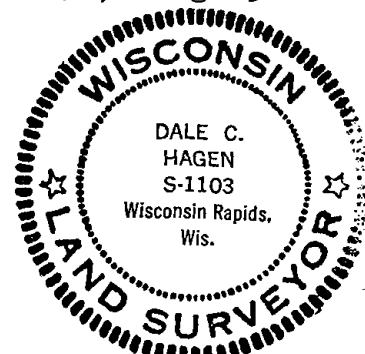
Accepted same as corner.

TIES & MON OK 9/29/80 BS-KU

3 NEW TIES 10-23-85 MB-SS
OK 3-30-90 SS

ALL OK 8-24-90 JG-SS
OK - 11-17-00 JG-SS

4-GONE 3-NEW 2-11-05, ML-DA
1 NEW TIE 2-16-10 SS



CERTIFIED CORRECT
Dale C. Hagen
Registered Land Surveyor
DATE: 6/3/75

TIE SKETCH

(Show at least four ties)

NOTE: Ties in trees to nail in disc.

