

PUBLIC LAND SURVEY MONUMENT RECORD

TYPE OF MONUMENT: HARRISON (BROKEN-TOP)
 ADAMS COUNTY COORDINATES, NAD 83 (2007)

N. 213284.636

E. 507293.367

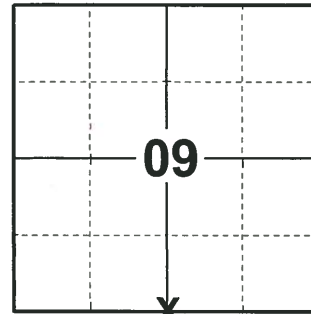
ELEVATION- _____ DATUM _____

FIELD WORK DATE: 01/16/2019

BASIS FOR MONUMENT LOCATION

1980 - PLS 1478 SET MONUMENT ON LINE BETWEEN ADJACENT SECTION CORNERS AND PROPORTIONATE TO M.C. SMITH'S NOTES OF SET.1920 AS RECORDED IN VOL. 2 PAGE 77 ACSR. UNABLE TO LOCATE ANY EVIDENCE OF SMITH'S BEARING TREES AT THIS POINT.

2019 - PLS 2675 FOUND HARRISON (BROKEN-TOP) 3" BELOW THE GROUND, 2 TIES AND 4 WITNESS TREES. THE MONUMENT AGREES WITH THE TIES AND WITNESS TREES. ACCEPTED THE HARRISON (BROKEN-TOP) AS THE CORNER. SET 2 NEW TIES. MEASURED TO THE EXISTING TIES AND WITNESS TREES.



LOCATION

(INDICATE CORNER BY "X")

SEAL:



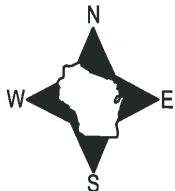
DATA SHOWN HERE ON THIS TIE SHEET IS CORRECT AND COMPLETE TO THE BEST OF MY KNOWLEDGE AND BELIEF.

PROFESSIONAL LAND SURVEYOR

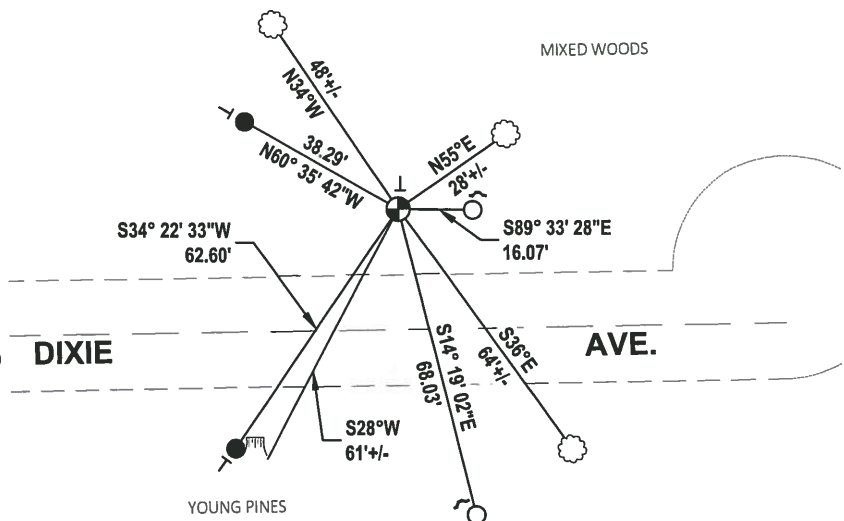
DATE 3/12/19

TIE SKETCH

NOTE: THE CORNER LANDS 27± NORTH OF DIXIE AVE.



- SET 3/4" x 18" IRON REBAR, 1.50#/FT
- FOUND 3/4" IRON ROD
- ⊕ FOUND HARRISON MONUMENT (BROKEN-TOP)
- ┌ STEEL FENCE POST
- └ VINYL "T" POST
- ☁ WITNESS TREE
- ┌ WITNESS STUMP

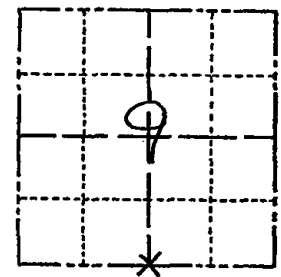


Government Land Corner Certificate

SET MARK
4/21/80
RNI-SS

CORNER NO. 46
SECTION 9
TOWN 17
RANGE 5

Adams County
TYPE OF MONUMENT: HARRISON TO BE REPLACED
STATE PLANE COORDINATES: N _____
E _____
ELEVATION — M.S.L. DATUM: _____
THETA ANGLE: _____
FIELD BOOK: B3 PAGE 133
DRAWN BY: G.P.F.



LOCATION
(Indicated by 'X')

BASIS FOR MONUMENT LOCATION

Show info such as: History of corner, with reference to Vol. and pg., dates, surveyor; exact description of monument replaced; if location computed, by taped or EDM traverse; landowner remarks, etc. (Use reverse side if necessary)

Set monument on line between adjacent section corners and proportionate to M.C. Smith's notes of Sept., 1920 as recorded in Vol. 2 page 77 ACSR. I was unable to locate any evidence of Smith's bearing trees at this point.

ALL OK 7-2-85 DK
OK 1-29-90 KZ-SS
1 GONE-1 NEW 1-3-95 BS-SS
OK 1-10-00, JG-SS
4-NEW NAIL & DISTANCES, TOP OF MONUMENT BROKEN OFF
2-14-05, JG-DA
2-16-10 SS

SEAL:



DATA SHOWN HERE ON CERTIFIED CORRECT:

Gregory P. Rhinehart
Registered Land Surveyor

DATE: 3/9/80

TIE SKETCH

Show at least four ties, also fence lines, roads, topo, size and type of witness trees and if off road - best way to arrive at corner.

