

10 SECTION 17 TOWN 05 RANGE

# ADAMS COUNTY

COUNTY CORNER NO: 48  
 ROMPORTOL ID: 41705100020

## PUBLIC LAND SURVEY MONUMENT RECORD

TYPE OF MONUMENT: HARRISON  
 ADAMS COUNTY COORDINATES, NAD 83 (2007)

N. 213298.444  
 E. 512574.649

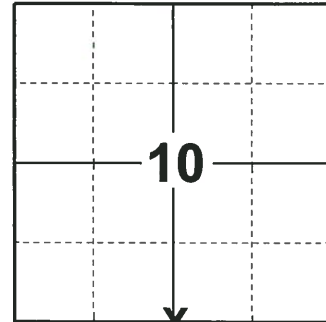
ELEVATION- \_\_\_\_\_ DATUM \_\_\_\_\_

FIELD WORK DATE: 01/02/2019

### BASIS FOR MONUMENT LOCATION

1980 - PLS 1478 CALCULATED THE CORNER LOCATION ON LINE BETWEEN ADJACENT SECTION CORNERS AND PROPORTIONATE TO M.C. SMITH'S NOTES OF SEPT. 1920 AS RECORDED IN VOL. 2 PAGE 77 ACSR. I WAS UNABLE TO LOCATE ANY OF SMITH'S EVIDENCE. SET A HARRISON MONUMENT AT THE CALCULATED LOCATION AND TIED OUT.

2019 - PLS 2675 FOUND A HARRISON MONUMENT FLUSH WITH THE GROUND SURFACE AND 2 WITNESS TREES. THE MONUMENT AGREES WITH THE EXISTING WITNESS TREES. ACCEPTED THE HARRISON MONUMENT AS THE CORNER LOCATION. SET 4 NEW TIES AND MEASURED TO THE TIES AND WITNESS TREES.



LOCATION

(INDICATE CORNER BY "X")

SEAL:



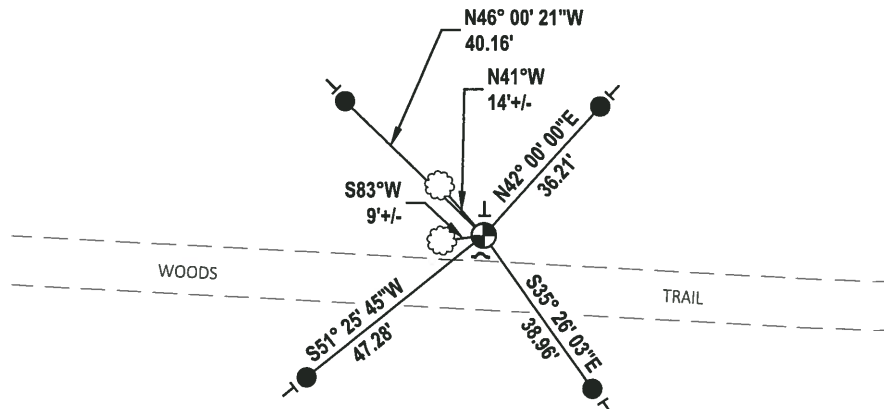
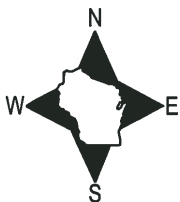
DATA SHOWN HERE ON THIS TIE SHEET IS CORRECT AND COMPLETE TO THE BEST OF MY KNOWLEDGE AND BELIEF.

PROFESSIONAL LAND SURVEYOR

DATE 1-18-19

### - TIE SKETCH

NOTE: THE CORNER LANDS 5'± NORTH OF THE WOODS TRAIL.



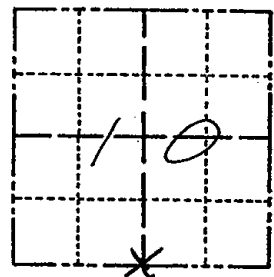
- SET 3/4" x 18" IRON REBAR, 1.50#/FT
- ⊕ FOUND HARRISON MONUMENT
- ~ STEEL FENCE POST
- VINYL "T" POST
- ☼ WITNESS TREE

# Government Land Corner Certificate

412180  
RN-SS

Adams County TEMP. 1" IRON  
TYPE OF MONUMENT: Harrison TO BE REPLACED  
STATE PLANE COORDINATES: N \_\_\_\_\_  
E \_\_\_\_\_  
ELEVATION — M.S.L. DATUM: \_\_\_\_\_  
THETA ANGLE: \_\_\_\_\_  
FIELD BOOK: 83 PAGE 136  
DRAWN BY: G.P.R.

CORNER NO. 48  
SECTION 10  
TOWN 17  
RANGE 5



LOCATION  
(Indicated by 'X')

## BASIS FOR MONUMENT LOCATION

Show info such as: History of corner, with reference to Vol. and pg., dates, surveyor; exact description of monument replaced; if location computed, by taped or EDM traverse; landowner remarks, etc. (Use reverse side if necessary)

Set on line between adjacent section corners and proportionate to M.C. Smith's notes of Sept. 1920 as recored in Vol. 2 page 77 ACSR. I was unable to locate any of Smith's evidence.

FIND STEEL POST AT CORNER - OK 1-29-90 KZ-SS  
1- GONE, 2-NEW 1-6-95 JG-BS  
3 REMAINING TIES 12-28-99  
NOTHING AVAILABLE SS  
1-NEW 2/10/05 - JG-SS  
2 NEW 9-2-10 SS

SEAL:



DATA SHOWN HERE ON  
CERTIFIED CORRECT:

*Gregory P Rhinehart*  
Registered Land Surveyor

DATE: 3/9/80

## TIE SKETCH

Show at least four ties, also fence lines, roads, topo, size and type of witness trees and if off road - best way to arrive at corner.

