

PUBLIC LAND SURVEY MONUMENT RECORD

TYPE OF MONUMENT: HARRISON (BROKEN-TOP)
 ADAMS COUNTY COORDINATES, NAD 83 (2007)

N. 213310.891

E. 515198.425

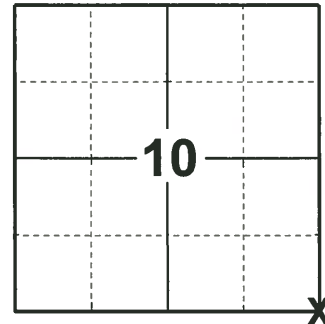
ELEVATION- - - - DATUM - - - -

FIELD WORK DATE: 01/15/2019

BASIS FOR MONUMENT LOCATION

1977 - PLS 1103 AFTER TRAVERSING THE WEST LINES OF SECTIONS 11 AND 14 WITH EDM/T2 TO DETERMINE SEARCH AREAS TWO BEARING TREE STUMPS WERE LOCATED. A STONE AS WAS DESCRIBED IN VOL. 2 PG. 77 OF ADAMS COUNTY SURVEYORS NOTES WAS FOUND AT THE DISTANCES AND BEARINGS NOTED BY M.C. SMITH, A PREVIOUS COUNTY SURVEYOR. THE POSITION OF THE STONE (10"X7"X13" RED GRANITE) WAS MONUMENT WITH A STANDARD HARRISON MONUMENT.

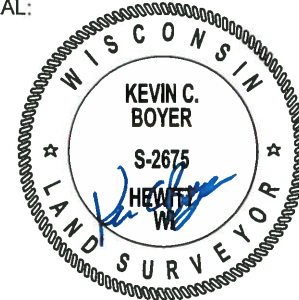
2019- PLS-2675 FOUND A HARRISON (BROKEN-TOP) 4" BELOW THE ROAD SURFACE, 1 TIE, AND 1 WITNESS. THE MONUMENT AGREES WITH THE EXISTING TIE AND WITNESS. ACCEPTED THE HARRISON (BROKEN-TOP) AS THE CORNER. SET 3 NEW TIES. MEASURED TO THE EXISTING TIE AND WITNESS.



LOCATION

(INDICATE CORNER BY "X")

SEAL:



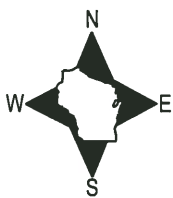
DATA SHOWN HERE ON THIS TIE SHEET IS CORRECT AND COMPLETE TO THE BEST OF MY KNOWLEDGE AND BELIEF.

PROFESSIONAL LAND SURVEYOR

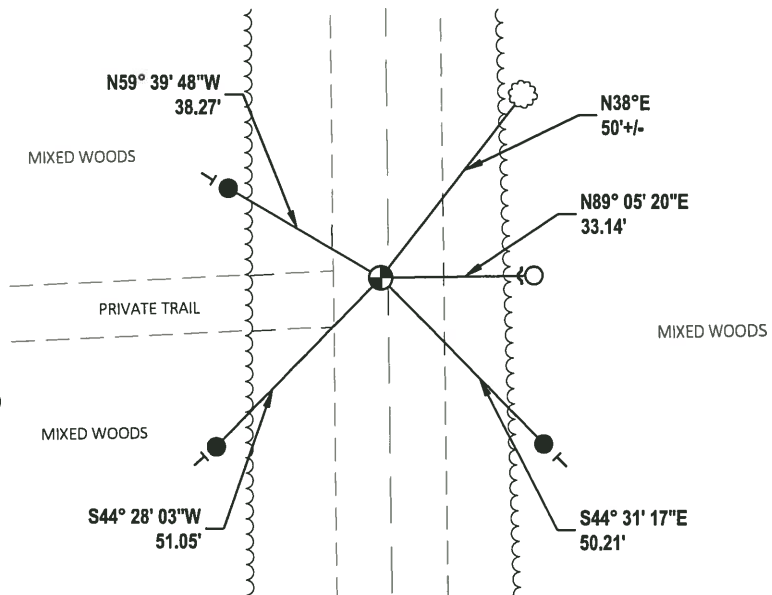
DATE 3/12/19

TIE SKETCH

NOTE: THE CORNER LANDS 1.5± WEST OF 16TH AVE.



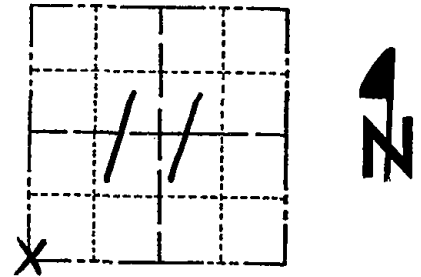
- SET 3/4" x 18" IRON REBAR, 1.50#/FT
- FOUND 3/4" IRON ROD
- ⊕ FOUND HARRISON MONUMENT (BROKEN-TOP)
- ~ STEEL FENCE POST
- VINYL "T" POST
- ☼ WITNESS TREE



Government Land Corner Certificate

ADAMS County
 TYPE OF MONUMENT: Standard Harrison
 STATE PLANE COORDINATES: N _____
 E _____
 ELEVATION — M.S.L. DATUM: _____
 THETA ANGLE: _____
 FIELD BOOK: 57 PAGE 24
 DRAWN BY: Greg Rhinehart

CORNER NO. 49
 SECTION 11
 TOWN 17
 RANGE 5



BASIS FOR MONUMENT LOCATION

Show info such as: History of corner, with reference to Vol. and pg., dates, surveyor; exact description of monument replaced; if location computed, by taped or EDM traverse; landowner remarks, etc. (Use reverse side if necessary)

After traversing the West lines of sections 11 and 14 with EDM/T2 to determine search areas two bearing tree stumps were located. A stone as was described in Vol. 2 Pg. 77 of Adams County Surveyor's notes was found at the distances and bearings noted by M. C. Smith, a previous County Surveyor.

The position of the stone (10"X7"X13" red granite) was monumented with a standard Harrison Monument.

SEAL:

LOCATION
(Indicated by 'X')



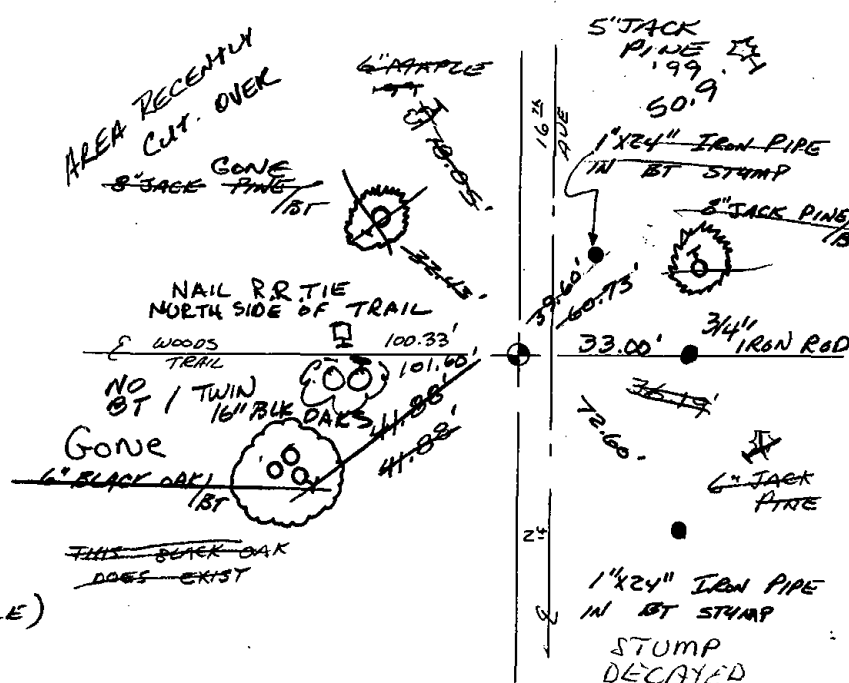
DATA SHOWN HERE ON
 CERTIFIED CORRECT:

Dale C. Hagen
 Registered Land Surveyor

DATE: 10-3-77

TIE SKETCH

Show at least four ties, also fence lines, roads, topo, size and type of witness trees' and if off road - best way to arrive at corner.



MAINTENANCE RECORD

Date	Init.	Remarks
9/20/80	KV-SK	MON BEEPS, TIES OK
9-30-85	MB-SS	1 NEW
1-29-90	KZ-SS	1-GONE (NONE AVAILABLE)
1-3-95	BS-SS	OK
12-3-99	JG-SS	2 NEW TIES
2-21-05	JG-DA	3-GONE, 3-NEW TIES
2-12-10	SS	OK

