

11 SECTION 17 TOWN 05 RANGE

ADAMS COUNTY

COUNTY CORNER NO: 50
 ROMPORTOL ID: 41705110020

PUBLIC LAND SURVEY MONUMENT RECORD

TYPE OF MONUMENT: HARRISON
 ADAMS COUNTY COORDINATES, NAD 83 (2007)

N. 213348.894
 E. 517850.523

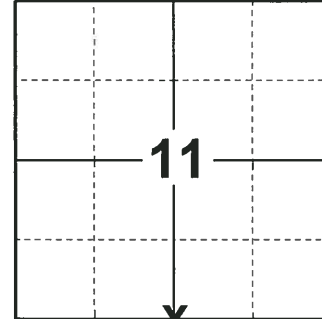
ELEVATION- DATUM

FIELD WORK DATE: 01/02/2019

BASIS FOR MONUMENT LOCATION

1977 PLS 1103 RAN EDM/T2 TRAVERSE AROUND SECTION 11 AND PORTIONS OF ADJACENT SECTIONS TO DETERMINE SEARCH AREA FOR INVESTIGATION. ALSO TIED INTO TRAVERSE BY MIDSTATES AND ASSOCIATES, OF BARRABOO, OF SECTION 14 TO FURTHER DEFINE SEARCH AREA. COULD FIND NO EVIDENCE OF THE ORIGINAL CORNER OF ANY REMONUMENTATION OF THIS CORNER. COULD FIND NO BEARING TREES. RELOCATED CORNER BY SINGLE PROPORTIONATE MEASURE ON LINE BETWEEN ADJACENT SECTION CORNERS. SET A HARRISON MONUMENT AND TIED OUT.

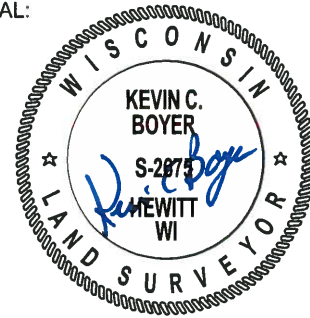
2019 - PLS 2675 FOUND A HARRISON MONUMENT 2" ABOVE THE GROUND SURFACE, 1 TIE AND 3 WITNESS TREES. THE MONUMENT AGREES WITH THE EXISTING TIE AND WITNESS TREES. ACCEPTED THE HARRISON MONUMENT AS THE CORNER LOCATION. SET 3 NEW TIES AND MEASURED TO THE TIES AND WITNESS TREES.



LOCATION

(INDICATE CORNER BY "X")

SEAL:

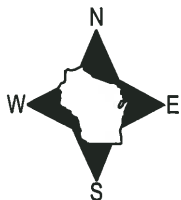


DATA SHOWN HERE ON THIS TIE SHEET IS CORRECT AND COMPLETE TO THE BEST OF MY KNOWLEDGE AND BELIEF.

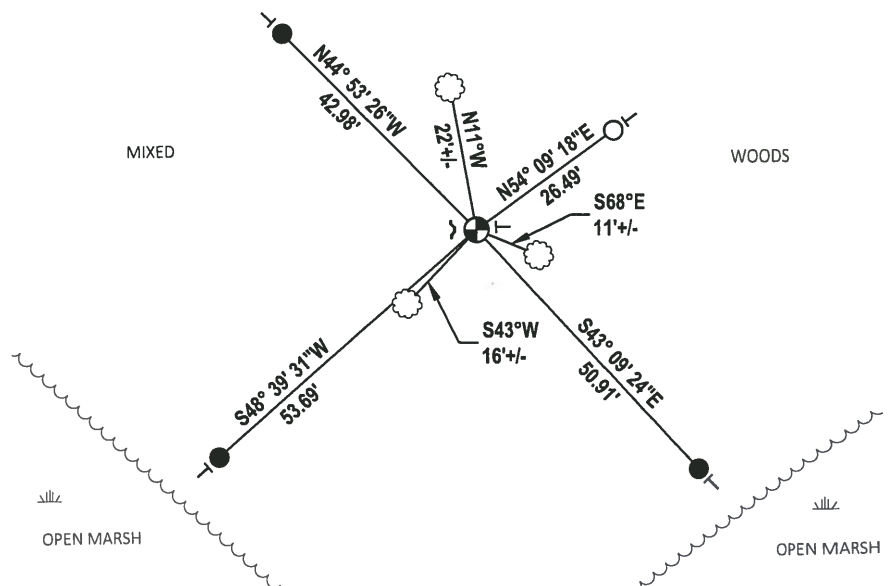
PROFESSIONAL LAND SURVEYOR

DATE 1-18-19

- TIE SKETCH



- SET 3/4" x 18" IRON REBAR, 1.50#/FT
- FOUND 3/4" IRON ROD
- ⊕ FOUND HARRISON MONUMENT
- ┌ STEEL FENCE POST
- └ VINYL "T" POST
- ☼ WITNESS TREE



Government Land Corner Certificate

ADAMS County

TYPE OF MONUMENT: HARRISON

STATE PLANE COORDINATES: N _____
E _____

ELEVATION — M.S.L. DATUM: _____

THETA ANGLE: _____

FIELD BOOK: 49 PAGE 129

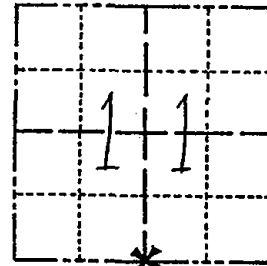
DRAWN BY: DALE C. HAGEN

CORNER NO. 50

SECTION 11

TOWN 17 NORTH

RANGE 5 EAST



LOCATION
(Indicated by 'X')

BASIS FOR MONUMENT LOCATION

Show info such as: History of corner, with reference to Vol. and pg., dates, surveyor; exact description of monument replaced; if location computed, by taped or EDM traverse; landowner remarks, etc. (Use reverse side if necessary)

Ran EDM/T2 traverse around Section 11 and portions of adjacent sections to determine search area for investigation. Also tied into traverse by Midstates and Associates, of Barraboo, of Section 14 to further define search area.

Could find no evidence of the original corner or any remonumentation of this corner. Could find no bearing trees.

Relocated corner by single proportionate measure on line between adjacent section corners.

SEAL:



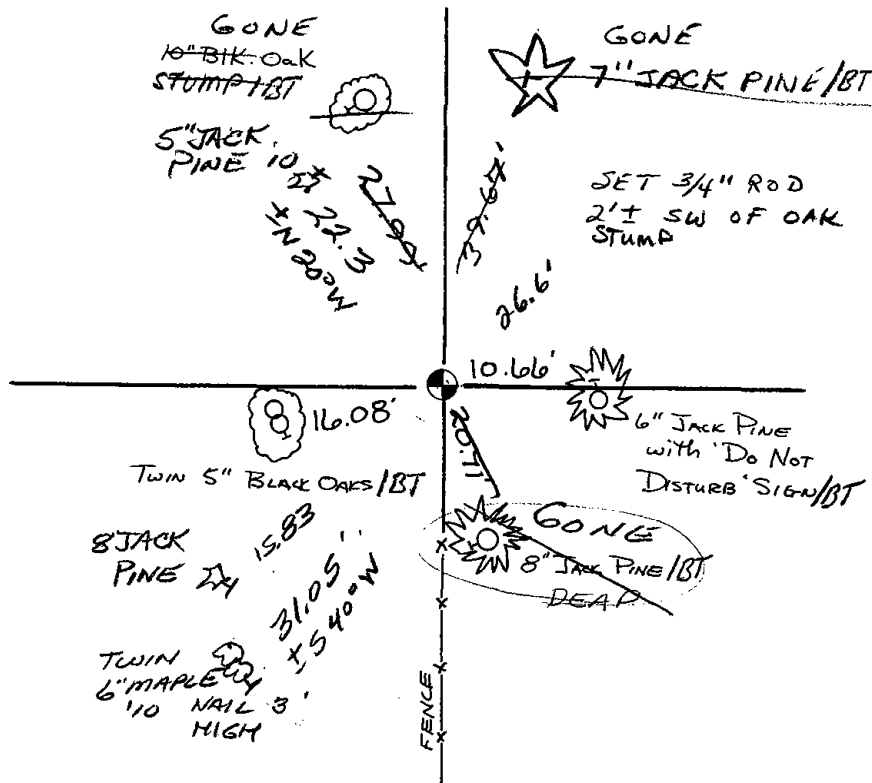
DATA SHOWN HERE ON
CERTIFIED CORRECT:

Dale C. Hagen
Registered Land Surveyor

DATE: December 19, 1977

TIE SKETCH

Show at least four ties, also fence lines, roads, topo, size and type of witness trees' and if off road - best way to arrive at corner.



MAINTENANCE RECORD

Date	Init.	Remarks
1/20/81	AN-SK	MON. OK - RETIED
10-21-85	MB-SS	1 NEW TIE
6-1-90	JG-SS	2-GONE, 1-NEW
1-3-95	SS-BS	OK
12-7-99	JG-SS	OK
1-10-06	SS	OK
2-12-10	SS	2 NEW TIES

