

PUBLIC LAND SURVEY MONUMENT RECORD

TYPE OF MONUMENT: HARRISON
 ADAMS COUNTY COORDINATES, NAD 83 (2007)

N. 210660.020

E. 499418.887

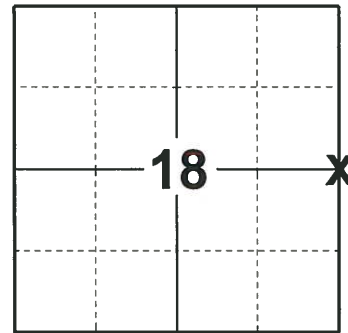
ELEVATION- _____ DATUM _____

FIELD WORK DATE: 02/14/2019

BASIS FOR MONUMENT LOCATION

1975 - PLS-1103 FOUND 2" IRON PIPE SET BY FRED ZIETLOW IN PREVIOUS SURVEY. ACCEPTED PIPE AND REPLACED WITH HARRISON MONUMENT.

2019 - PLS-2675 FOUND HARRISON MONUMENT 2" BELOW THE GROUND AND 2 WITNESSES. THE MONUMENT AGREES WITH BOTH WITNESSES. ACCEPTED THE HARRISON MONUMENT AS THE CORNER. SET 3 NEW TIES, MEASURED TO A FOUND PROPERTY IRON, AND MEASURED TO THE EXISTING WITNESSES.



LOCATION
 (INDICATE CORNER BY "X")

SEAL:



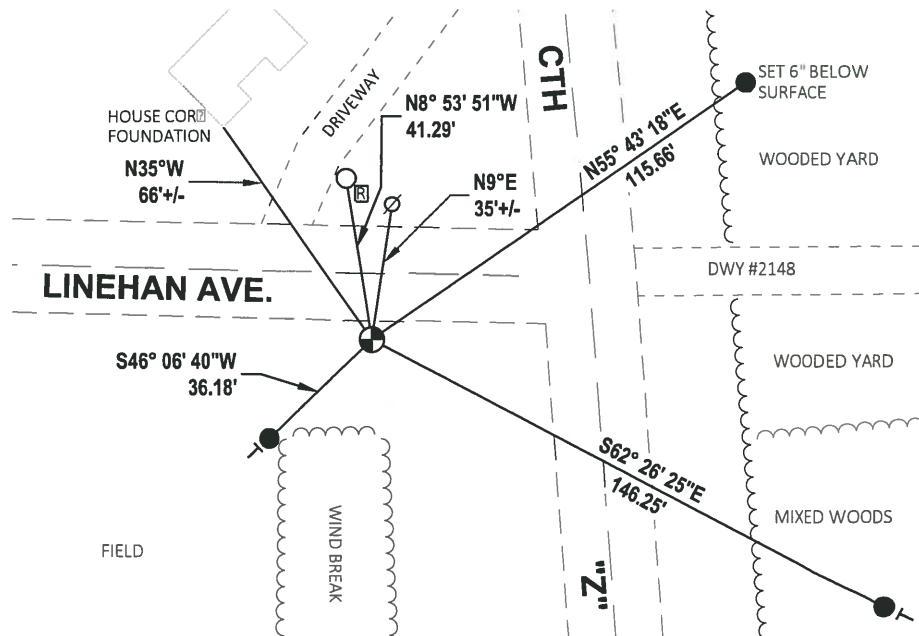
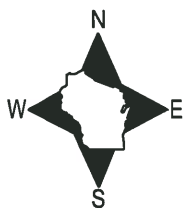
DATA SHOWN HERE ON THIS TIE SHEET IS CORRECT AND COMPLETE TO THE BEST OF MY KNOWLEDGE AND BELIEF.

PROFESSIONAL LAND SURVEYOR

DATE 3/12/19

- TIE SKETCH

NOTE: THE CORNER LANDS 17'± SOUTH OF LINEHAN AVE AND 57'± WEST OF CTH "Z"



- SET 3/4" x 18" IRON REBAR, 1.50#/FT
- FOUND 3/4" IRON ROD
- ⊕ FOUND HARRISON MONUMENT
- ∅ WITNESS POWER POLE
- └ VINYL "T" POST
- ⊠ RW GUARD POST

ADAMS COUNTY

Survey Monument Record

TYPE OF MONUMENT: Harrison Standard

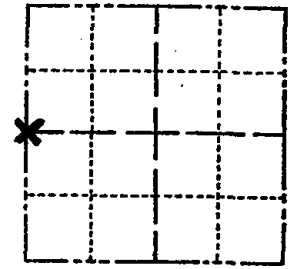
STATE PLANE COORDINATES: N _____
E _____

ELEVATION — M.S.L. DATUM: _____

THETA ANGLE: _____

FIELD BOOK: _____ PAGE _____

CORNER NO. 664 ⁽⁵⁵⁾
SECTION 17
TOWN 17
RANGE 5



LOCATION
(Indicated by 'X')

SEAL:

BASIS FOR MONUMENT LOCATION

(Use reverse side if necessary)

Show info such as: History of corner, with reference to Vol. and pg, dates, surveyor; exact description of monument replaced; if location computed, by taped or EDM traverse; landowner remarks, etc.

Found 2" Iron Pipe set by Fred Zietlow in previous survey. Accepted pipe and replaced with Harrison Monument.



CORNER O.K. 10-31-75 D.M.-S.S.
MONEY TIES OK 9/26/80 KV-SK
ALL OK 5/30/85 DK.
OK 1-30-90 KZ-SS

CERTIFIED CORRECT:

Dale C. Hagen
Registered Land Surveyor

DATE: 6/3/75

TIE SKETCH

ALL OK 8-24-94 JG-SS OK 9-2-10 SS

(Show at least four ties)

OK 2-15-05 DA/JG

ALL OK 1-10-00, JG-SS

