

PUBLIC LAND SURVEY MONUMENT RECORD

TYPE OF MONUMENT: HARRISON (BROKEN-TOP)
 ADAMS COUNTY COORDINATES, NAD 83 (2007)

N. 210641.549

E. 504710.807

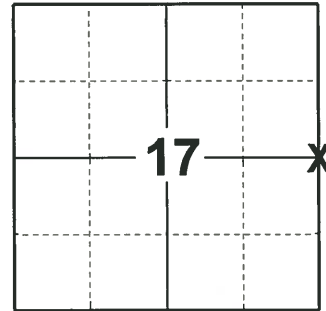
ELEVATION- - - - DATUM - - - -

FIELD WORK DATE: 01/30/2019

BASIS FOR MONUMENT LOCATION

1975 - PLS-1103 SET CORNER EQUIDISTANT AND ON LINE BETWEEN ADJACENT SECTION CORNERS. COULD FIND NO EVIDENCE OF THE ORIGINAL CORNER OR ANY SUBSEQUENT REMONUMENTATION.

2019 - PLS-2675 FOUND HARRISON MONUMENT (BROKEN-TOP) 18" BELOW THE SURFACE AND 1 TIE. THE MONUMENT AGREES WITH THE EXISTING TIE. ACCEPTED THE HARRISON MONUMENT (BROKEN-TOP) AS THE CORNER. SET 3 NEW TIES AND MEASURED TO EXISTING TIE.



LOCATION

(INDICATE CORNER BY "X")

SEAL:



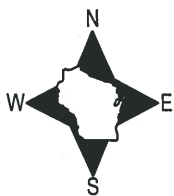
DATA SHOWN HERE ON THIS TIE SHEET IS CORRECT AND COMPLETE TO THE BEST OF MY KNOWLEDGE AND BELIEF.

PROFESSIONAL LAND SURVEYOR

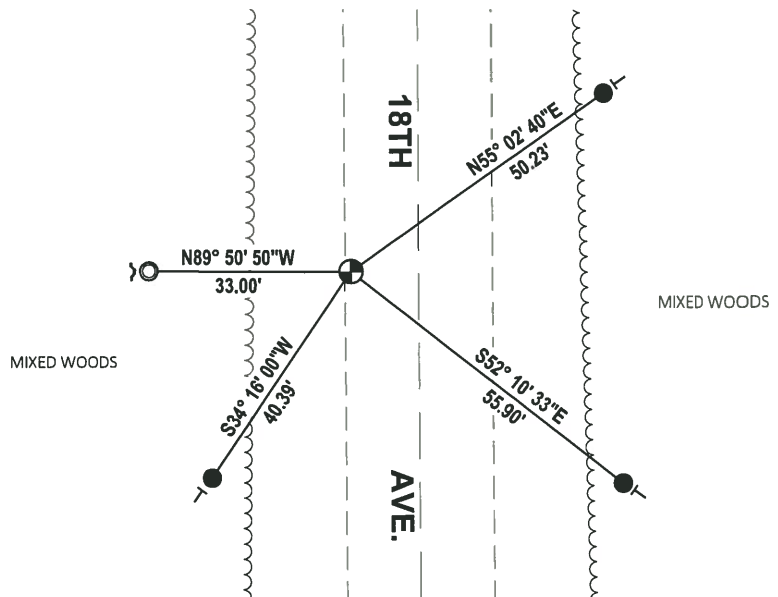
DATE 3/12/19

- TIE SKETCH

NOTE: THE CORNER LANDS 11± WEST OF CENTERLINE OF 18TH AVE.



- SET 3/4" x 18" IRON REBAR, 1.50#/FT
- FOUND 1-1/4" O.D. IRON PIPE
- ⊙ FOUND HARRISON MONUMENT (BROKEN-TOP)
- ✓ STEEL FENCE POST
- ┊ VINYL "T" POST



ADAMS COUNTY

Survey Monument Record

TYPE OF MONUMENT: Harrison Standard

STATE PLANE COORDINATES: N _____

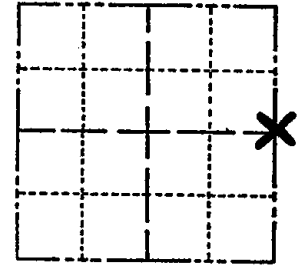
E _____

ELEVATION — M.S.L. DATUM: _____

THETA ANGLE: _____

FIELD BOOK: _____ PAGE _____

CORNER NO. 711 56
 SECTION 17
 TOWN 17
 RANGE 6



LOCATION
(Indicated by 'X')

BASIS FOR MONUMENT LOCATION

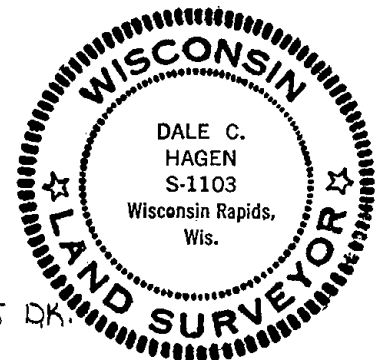
(Use reverse side if necessary)

Show info such as: History of corner, with reference to Vol. and pg, dates, surveyor; exact description of monument replaced; if location computed, by taped or EDM traverse; landowner remarks, etc.

Set corner equidistant and on line between adjacent Section corners .

Could find no evidence of the original corner or any subsequent remonumentation.

SEAL:



MON & TIES OK RN-TH 8/27/80

Ties all ok, monument Has Broken Top 5/23/85 DK.

OK 1-29-90 KZ-SS

ALL OK 8-29-99 JG-SS

1-GONE, 1-NEW, 1-10-00, JG-SS

ALL OK 2-14-05, JG-DA

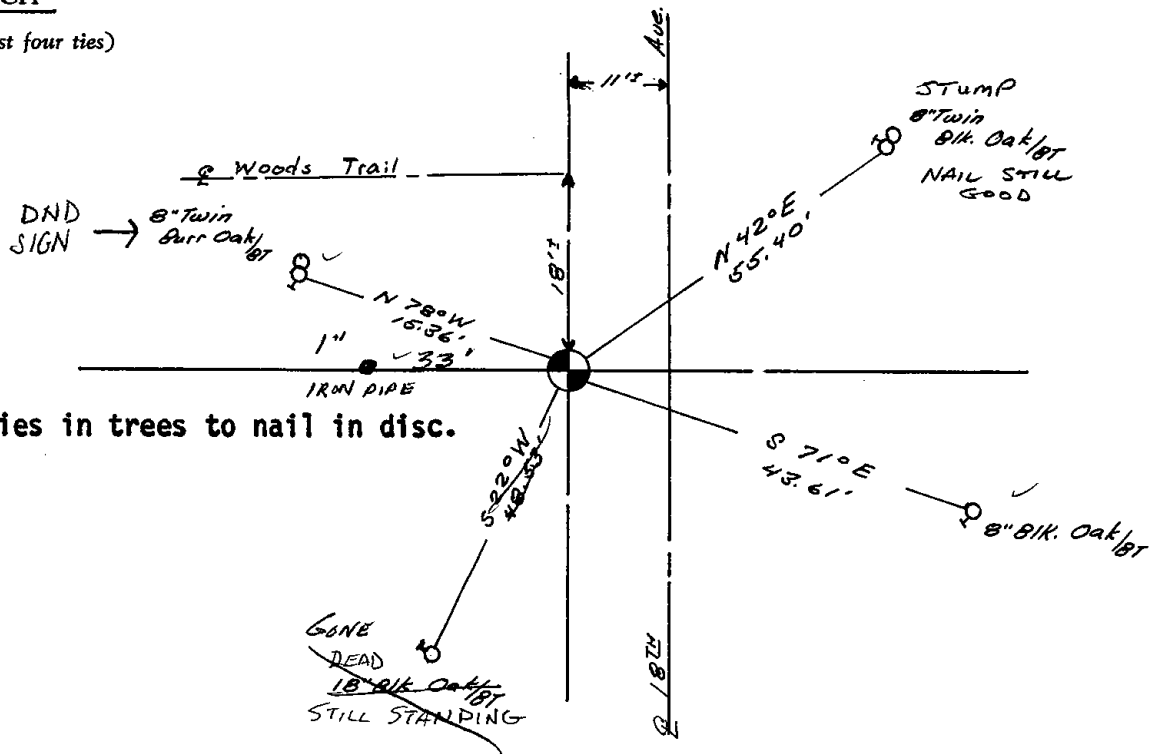
2-16-10 SS

CERTIFIED CORRECT:

Dale C. Hagen
 Registered Land Surveyor
 DATE: 6/3/75

TIE SKETCH

(Show at least four ties)



NOTE: Ties in trees to nail in disc.

