

PUBLIC LAND SURVEY MONUMENT RECORD

TYPE OF MONUMENT: HARRISON
 ADAMS COUNTY COORDINATES, NAD 83 (2007)

N. 210686.041

E. 515217.682

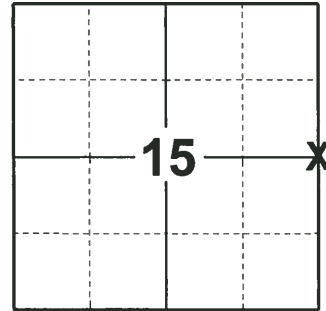
ELEVATION- - - - DATUM - - - -

FIELD WORK DATE: 01/29/2019

BASIS FOR MONUMENT LOCATION

1977 - PLS-1103 RAN EDM/T2 TRAVERSE AROUND SECTION 11 AND THE WEST LINE OF SECTION 14 TO DETERMINE SEARCH AREA FOR INVESTIGATION. EXCAVATION WITH BACKHOE YIELDED NO EVIDENCE OF THE ORIGINAL CORNER OR ANY REMONUMENTATION. COULD FIND NO BEARING TREES. RELOCATED CORNER HALFWAY AND ON LINE BETWEEN THE NORTHWEST AND SOUTHWEST CORNERS OF SECTION 14. SET HARRISON MONUMENT.

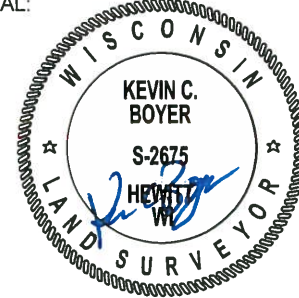
2019 - PLS-2675 FOUND HARRISON MONUMENT 12" BELOW THE ROAD SURFACE AND 1 TIE. THE MONUMENT AGREES WITH THE TIE. ACCEPTED THE HARRISON MONUMENT AS THE CORNER. SET 3 NEW TIES AND MEASURED TO THE EXISTING TIE.



LOCATION

(INDICATE CORNER BY "X")

SEAL:



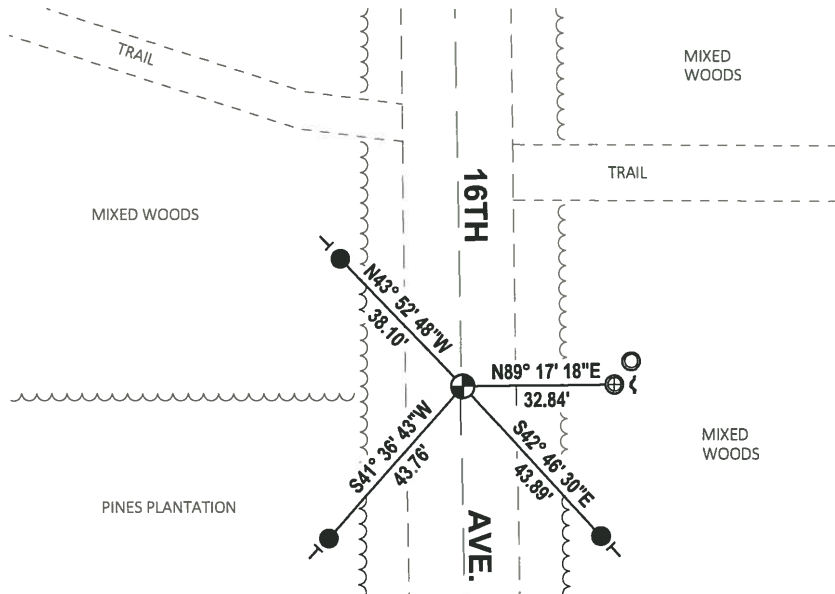
DATA SHOWN HERE ON THIS TIE SHEET IS CORRECT AND COMPLETE TO THE BEST OF MY KNOWLEDGE AND BELIEF.

PROFESSIONAL LAND SURVEYOR

DATE 3/12/19

TIE SKETCH

NOTE: THE CORNER LANDS 1.5'± EAST OF CENTER OF 16TH AVE.

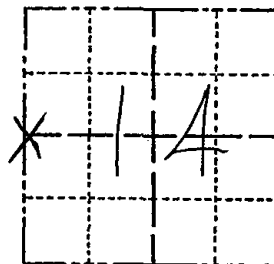


- SET 3/4" x 18" IRON REBAR, 1.50#/FT
- ⊕ FOUND 1" O.D. IRON PIPE
- FOUND 1-1/4" O.D. IRON PIPE
- ⊕ FOUND HARRISON MONUMENT
- ~ STEEL FENCE POST
- ┌ VINYL "T" POST

Government Land Corner Certificate

ADAMS County
 TYPE OF MONUMENT: Harrison
 STATE PLANE COORDINATES: N _____
 E _____
 ELEVATION — M.S.L. DATUM: _____
 THETA ANGLE: _____
 FIELD BOOK: 57 PAGE 26
 DRAWN BY: Roger Nuber

CORNER NO. 58
 SECTION 14
 TOWN 17
 RANGE 5



LOCATION
(Indicated by 'X')

BASIS FOR MONUMENT LOCATION

Show info such as: History of corner, with reference to Vol. and pg., dates, surveyor; exact description of monument replaced; if location computed, by taped or EDM traverse; landowner remarks, etc. (Use reverse side if necessary)

Ran EDM/T2 traverse around Section 11 and the West line of Section 14 to determine search area for investigation.

Excavation with backhoe yielded no evidence of the original corner or any remonumentation. Could find no bearing trees.

Relocated corner half way and on line between the Northwest and Southwest corners of section 14.

Set Harrison Monument.

SEAL:



DATA SHOWN HERE ON
CERTIFIED CORRECT:

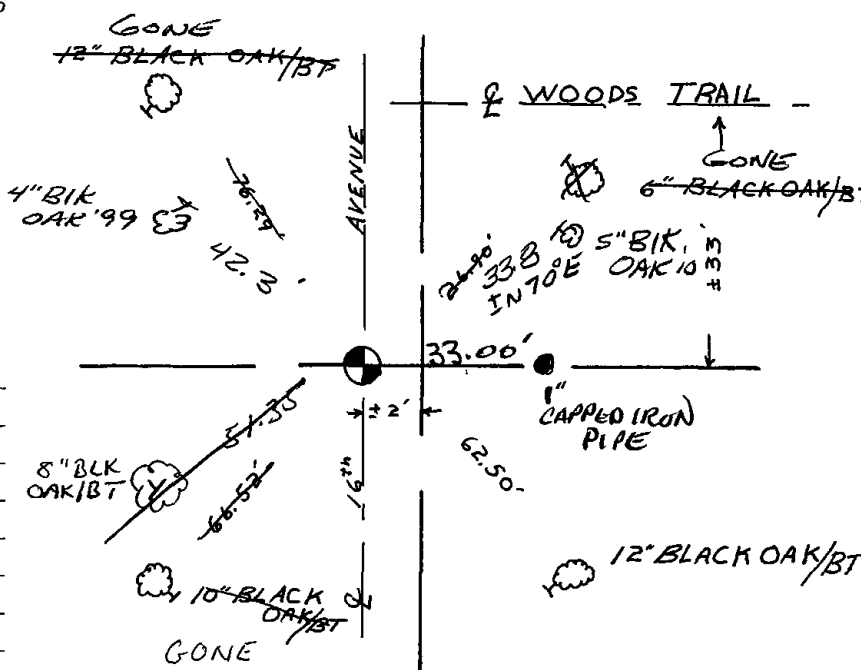
Dale C. Hagen
Registered Land Surveyor
DATE: 11-9-1977

TIE SKETCH

Show at least four ties, also fence lines, roads, topo, size and type of witness trees' and if off road - best way to arrive at corner.

NOTE

Ties in trees to nail in disc.



MAINTENANCE RECORD

Date	Init.	Remarks
9/26/80	KV-SK	MON & TIES OK
5/29/85	DK	ALL OK
6-1-90	JG-SS	ALL OK
1-6-95	JG-BB	ALL OK
12-3-99	JG-SS	1 NEW TIE
8-7-05	JG	1 GONE 1-NEW
2-12-10	SS	1 NEW TIE

