

PUBLIC LAND SURVEY MONUMENT RECORD

TYPE OF MONUMENT: HARRISON (BROKEN-TOP)
 ADAMS COUNTY COORDINATES, NAD 83 (2007)

N. 207999.249
 E. 504739.812

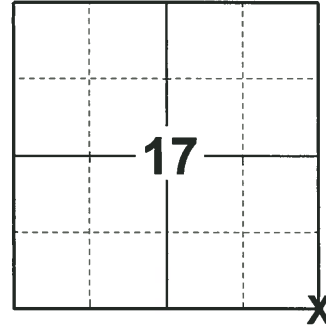
ELEVATION- - - - DATUM - - - -

FIELD WORK DATE: 01/30/2019

BASIS FOR MONUMENT LOCATION

1975 - PLS-1103 PRORATED CORNER BETWEEN EXISTING EVIDENCE IN THE NORTH-SOUTH DIRECTION AND SET RECORD DISTANCE FROM EXISTING CORNER TO THE WEST.

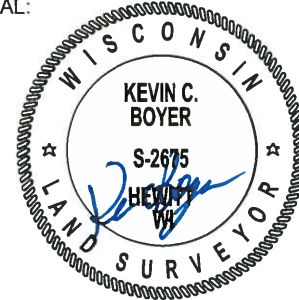
2019 - PLS-2675 FOUND HARRISON MONUMENT (BROKEN-TOP) 8" BELOW THE GROUND SURFACE AND DID NOT RECOVER ANY TIES OR WITNESSES. ACCEPTED THE HARRISON MONUMENT (BROKEN-TOP) AS THE CORNER. SET 3 NEW TIES AND MEASURED TO A FOUND PROPERTY IRON.



LOCATION

(INDICATE CORNER BY "X")

SEAL:



DATA SHOWN HERE ON THIS TIE SHEET IS CORRECT AND COMPLETE TO THE BEST OF MY KNOWLEDGE AND BELIEF.

PROFESSIONAL LAND SURVEYOR

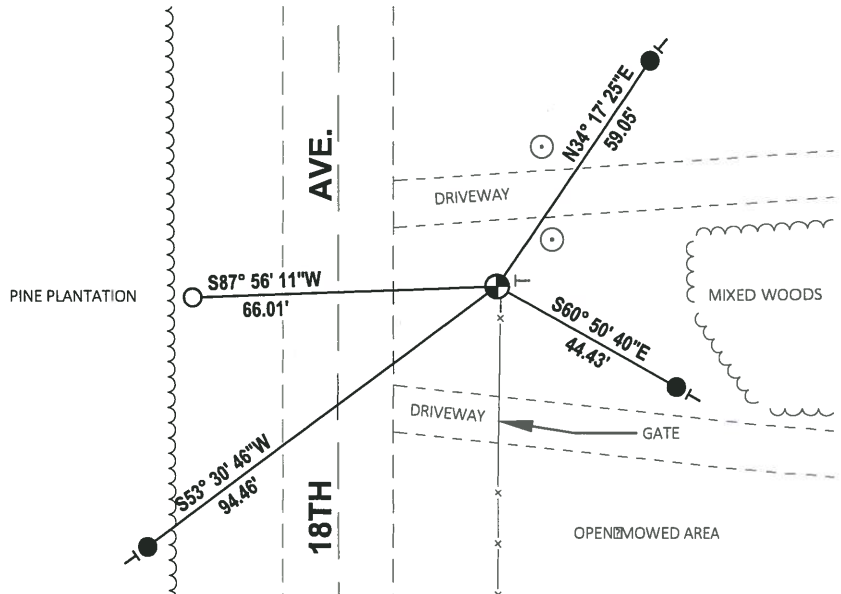
DATE 3/12/19

- TIE SKETCH

NOTE: THE CORNER LANDS 34.5'± EAST OF CENTERLINE OF 18TH AVE AND 1.7'± WEST OF THE FENCE.



- SET 3/4" x 18" IRON REBAR, 1.50#/FT
- FOUND 3/4" IRON ROD
- ⊕ FOUND HARRISON MONUMENT (BROKEN-TOP)
- ┊ VINYL "T" POST
- ⊙ POST



ADAMS COUNTY

Survey Monument Record

TYPE OF MONUMENT: Harrison Standard

STATE PLANE COORDINATES: N _____

E _____

ELEVATION — M.S.L. DATUM: _____

THETA ANGLE: _____

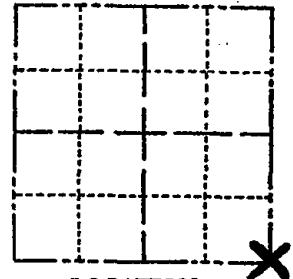
FIELD BOOK: _____ PAGE _____

CORNER NO. 712 (65)

SECTION 17

TOWN 17

RANGE 5



LOCATION (Indicated by 'X')

SEAL:

BASIS FOR MONUMENT LOCATION

(Use reverse side if necessary)

Show info such as: History of corner, with reference to Vol. and pg, dates, surveyor; exact description of monument replaced; if location computed, by taped or EDM traverse; landowner remarks, etc.

Prorated corner between existing evidence in the North-South direction and set record distance from existing corner to the west.

MON + TIES OK RN-TH 8/27/80

MON + Ties OK 5/23/85 D.K.

2-GONE, 1-NEW 6-25-90 JG

3-GONE, 4-NEW 2/2/95 JG-GR

2-GONE, 3-NEW, 1-10-00, JG-SS

1-GONE, 1-NEW, mon. OK, 2-14-05, JC-DA
OIC 11/21/2010, 'GPR



CERTIFIED CORRECT:

Dale C. Hagen

Registered Land Surveyor

DATE: 6/3/75

TIE SKETCH

(Show at least four ties)

NOTE: Ties in trees to nail in disc.

