

16
SECTION

17
TOWN

05
RANGE

ADAMS COUNTY

COUNTY CORNER NO: 66

ROMPORTOL ID: 41705160020

PUBLIC LAND SURVEY MONUMENT RECORD

TYPE OF MONUMENT: HARRISON (BROKEN-TOP)

ADAMS COUNTY COORDINATES, NAD 83 (2007)

N. 208001.543

E. 507349.055

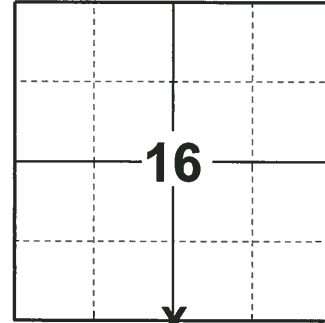
ELEVATION- DATUM

FIELD WORK DATE: 01/03/2019

BASIS FOR MONUMENT LOCATION

1980 PLS 1444 CALCULATED THE CORNER LOCATION EQUIDISTANT AND ON LINE BETWEEN SECTION CORNERS. NO EVIDENCE OF ORIGINAL CORNER OR ANY RESURVEY CORNER. SET A HARRISON MONUMENT AT THE CALCULATED LOCATION AND TIED OUT.

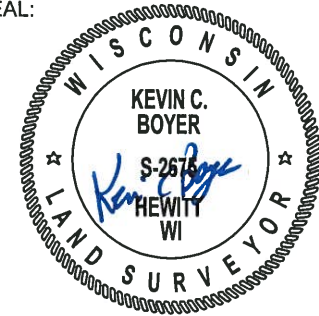
2019 - PLS 2675 FOUND A 1" IRON ROD LEANING AND UP 12". REMOVED THE 1" IRON ROD AND FOUND A HARRISON MONUMENT WITH A BROKEN-TOP 24" BELOW GROUND SURFACE. FOUND NO EVIDENCE OF ANY OF THE EXISTING TIES OR WITNESSES. ACCEPTED THE HARRISON MONUMENT WITH A BROKEN-TOP AS THE BEST EVIDENCE OF THE CORNER LOCATION. SET 4 NEW TIES AND MEASURED TO THE TIES.



LOCATION

(INDICATE CORNER BY "X")

SEAL:



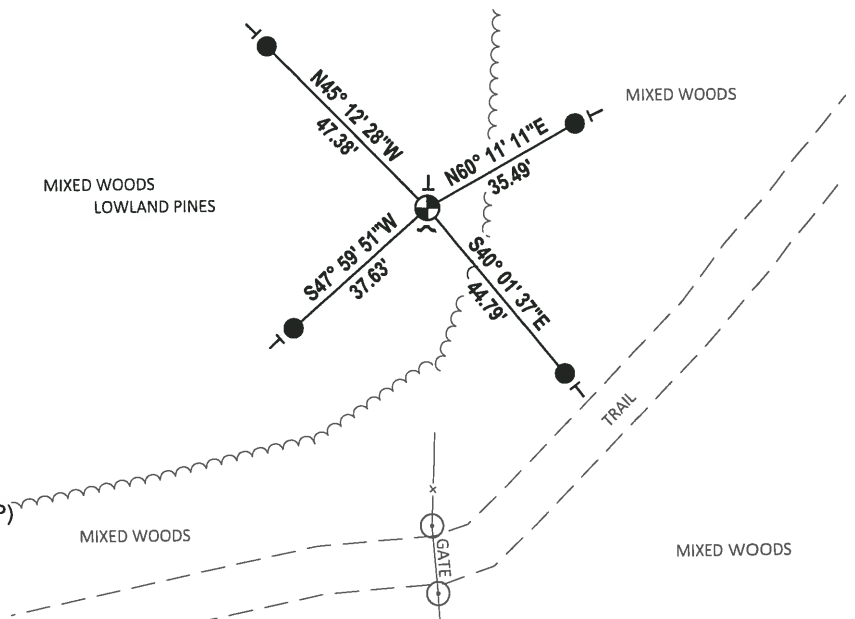
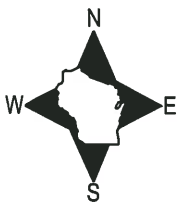
DATA SHOWN HERE ON THIS TIE SHEET IS CORRECT AND COMPLETE TO THE BEST OF MY KNOWLEDGE AND BELIEF.

PROFESSIONAL LAND SURVEYOR

DATE 1-18-19

TIE SKETCH

NOTE: THE CORNER FALLS 66'± NORTH OF THE NORTH GATE POST.



- SET 3/4" x 18" IRON REBAR, 1.50#/FT
- ⊕ FOUND HARRISON MONUMENT (BROKEN-TOP)
- ↗ STEEL FENCE POST
- ┌ VINYL "T" POST

Government Land Corner Certificate

ADAMS County

TYPE OF MONUMENT: HARRISON

STATE PLANE COORDINATES: N 43° 56' 14.1"
 HAND HELD GRS 2010 E 089° 54' 27.3"

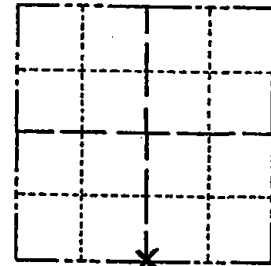
ELEVATION — M.S.L. DATUM: _____

THETA ANGLE: _____

FIELD BOOK: 17 PAGE 113

DRAWN BY: LANCE HABECK

CORNER NO. 66
 SECTION 16
 TOWN 17
 RANGE 5

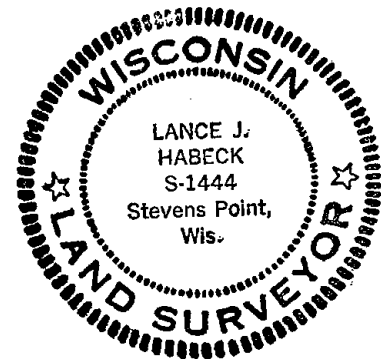


LOCATION
(Indicated by 'X')

BASIS FOR MONUMENT LOCATION

Show info such as: History of corner, with reference to Vol. and pg., dates, surveyor; exact description of monument replaced; if location computed, by taped or EDM traverse; landowner remarks, etc. (Use reverse side if necessary)

SEAL:



This corner was set equidistant and on line between section corners. No evidence of original corner or any resurvey corner.

DATA SHOWN HERE ON
CERTIFIED CORRECT:

Lance J. Habeck
Registered Land Surveyor

DATE: 11/5/80

TIE SKETCH

Show at least four ties, also fence lines, roads, topo, size and type of witness trees and if off road - best way to arrive at corner.

- 1-29-90 KZ-SS 2-NEW
- 1-4-95 JG-BS
- COMPLETE AREA PULPED OFF, COULDN'T FIND!
- 12" OF HARR. BROKE OFF
- SET 1/4" X 30" ON TOP
- HARRISON 2-2-95 JG-GR
- 1-NEW TIE BRNG
- STEEL POST FOR CORNER NEXT TIME
- 1-15-00 JG-SS
- 4 NEW TIES 2-15-05 DA/JG
- OK 11-17-10 GR

