

15 SECTION 17 TOWN 05 RANGE

ADAMS COUNTY

COUNTY CORNER NO: 68

ROMPORTOL ID: 41705150020

PUBLIC LAND SURVEY MONUMENT RECORD

TYPE OF MONUMENT: HARRISON
ADAMS COUNTY COORDINATES, NAD 83 (2007)

N. 208031.897

E. 512597.612

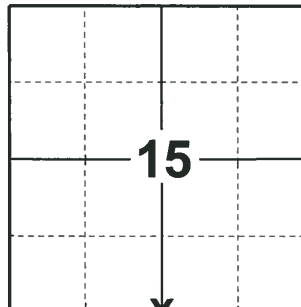
ELEVATION- - - - - DATUM - - - - -

FIELD WORK DATE: 01/08/2019

BASIS FOR MONUMENT LOCATION

1980 - PLS-1444 SET CORNER EQUIDISTANT AND ON LINE BETWEEN SECTION CORNERS. NO EVIDENCE OF ORIGINAL CORNER OR ANY RESURVEY CORNER.

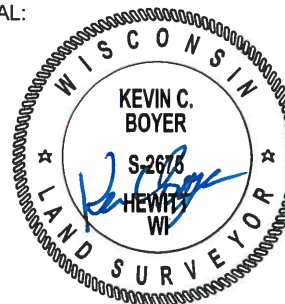
2019 - PLS-2675 FOUND HARRISON MONUMENT 4" ABOVE THE GROUND AND 2 WITNESS TREES. THE MONUMENT AGREES WITH BOTH WITNESS TREES. ACCEPTED THE HARRISON MONUMENT AS THE CORNER. SET 4 NEW TIES AND MEASURED TO THE EXISTING WITNESS TREES.



LOCATION

(INDICATE CORNER BY "X")

SEAL:



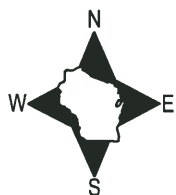
DATA SHOWN HERE ON THIS TIE SHEET IS CORRECT AND COMPLETE TO THE BEST OF MY KNOWLEDGE AND BELIEF.

PROFESSIONAL LAND SURVEYOR

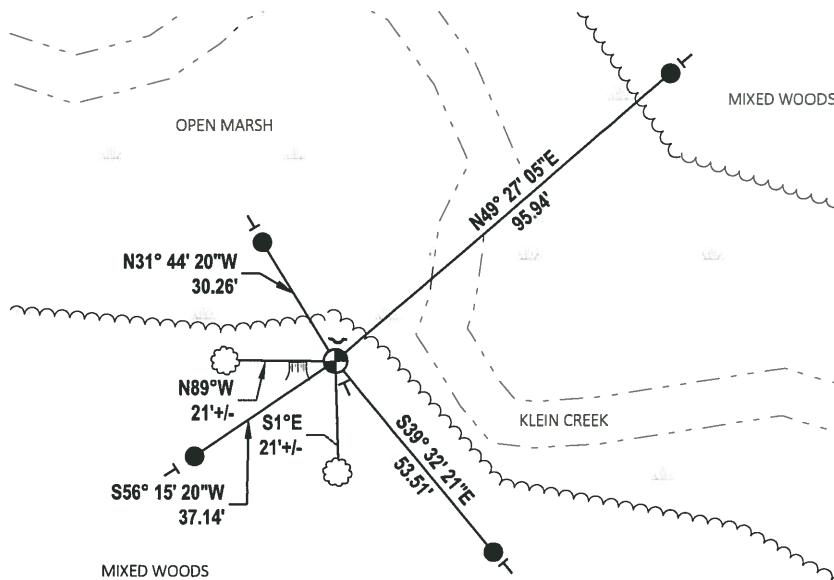
DATE 3/12/19

- TIE SKETCH

NOTE: WITNESS STUMP FALLS 9± S74°W OF THE CORNER.



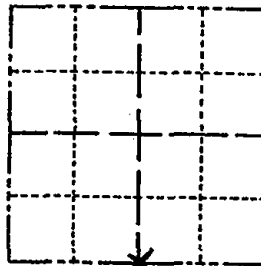
- SET 3/4" x 18" IRON REBAR, 1.50#/FT
- ⊕ FOUND HARRISON MONUMENT
- ┌ STEEL FENCE POST
- └ VINYL "T" POST
- ⊙ WITNESS TREE
- ⊙ WITNESS STUMP



Government Land Corner Certificate

ADAMS County
 TYPE OF MONUMENT: HARRISON
 STATE PLANE COORDINATES: N 43° 56' 14.4"
HAND HELD GPS 2010 E 089° 53' 15.4"
 ELEVATION — M.S.L. DATUM: _____
 THETA ANGLE: _____
 FIELD BOOK: 77 PAGE 116
 DRAWN BY: LANCE HABECK

CORNER NO. 68
 SECTION 15
 TOWN 17
 RANGE 5



LOCATION
(Indicated by 'X')

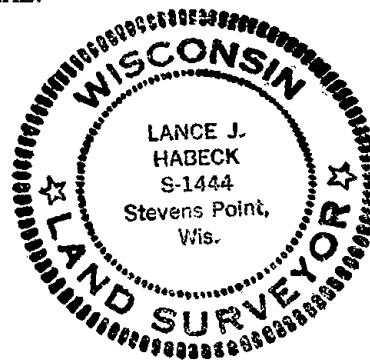
BASIS FOR MONUMENT LOCATION

Show info such as: History of corner, with reference to Vol. and pg., dates, surveyor; exact description of monument replaced; if location computed, by taped or EDM traverse; landowner remarks, etc. (Use reverse side if necessary)

This corner was set equidistant and on line between section corners. No evidence of original corner or any resurvey corner.

- OK 1-29-90 KZ-SS
- 1-NEW 1-6-95 JG-BB
- 3 NEW TIES - ALL ELSE DEAD
1-6-00 SS
- OK, 1-17-06 - JG-JS
- 1 NEW TIE 11-18-10 GR

SEAL:



DATA SHOWN HERE ON
CERTIFIED CORRECT:

Lance J. Habeck
Registered Land Surveyor

DATE: 11/5/80

TIE SKETCH

Show at least four ties, also fence lines, roads, topo, size and type of witness trees' and if off road - best way to arrive at corner.

ENTER WOODS TRAIL 150'± SOUTH OF
 S.E. COR. SEC 15
 TRAVELS WESTERLY TO FIRST
 FORK TO RIGHT WHICH GOES
 NORTHERLY ONLY 100'± -
 WALK NORTH 300-400' TO CREEK

