

PUBLIC LAND SURVEY MONUMENT RECORD

TYPE OF MONUMENT: HARRISON
ADAMS COUNTY COORDINATES, NAD 83 (2007)

N. 205231.730

E. 499450.608

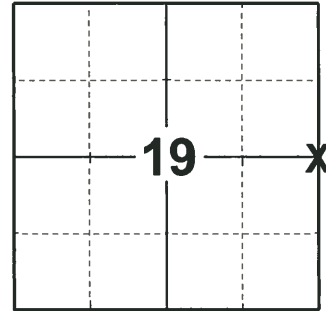
ELEVATION- - - - - DATUM - - - - -

FIELD WORK DATE: 02/19/2019

BASIS FOR MONUMENT LOCATION

1975 - PLS-1103 RAN EDM/TRANSIT TRAVERSE OF THE ENTIRE AREA. SET CORNER BY DOUBLING OVER LINE FROM CENTER OF SECTION AND 40 CORNER TO THE EAST. THESE CORNERS ARE EXISTING CONCRETE MONUMENTS.

2019 - PLS-2675 FOUND HARRISON MONUMENT 3" BELOW THE ROAD SURFACE, 2 TIES, AND 2 WITNESSES. THE MONUMENT FIT WITH THE SW TIE AND BOTH WITNESSES. ACCEPTED THE HARRISON MONUMENT AS THE CORNER. MEASURED TO THE 2 RIGHT OF WAY IRONS, MEASURED TO THE EXISTING TIES, AND WITNESS.



LOCATION

(INDICATE CORNER BY "X")

SEAL:



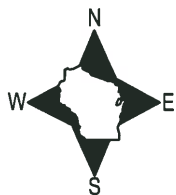
DATA SHOWN HERE ON THIS TIE SHEET IS CORRECT AND COMPLETE TO THE BEST OF MY KNOWLEDGE AND BELIEF.

PROFESSIONAL LAND SURVEYOR

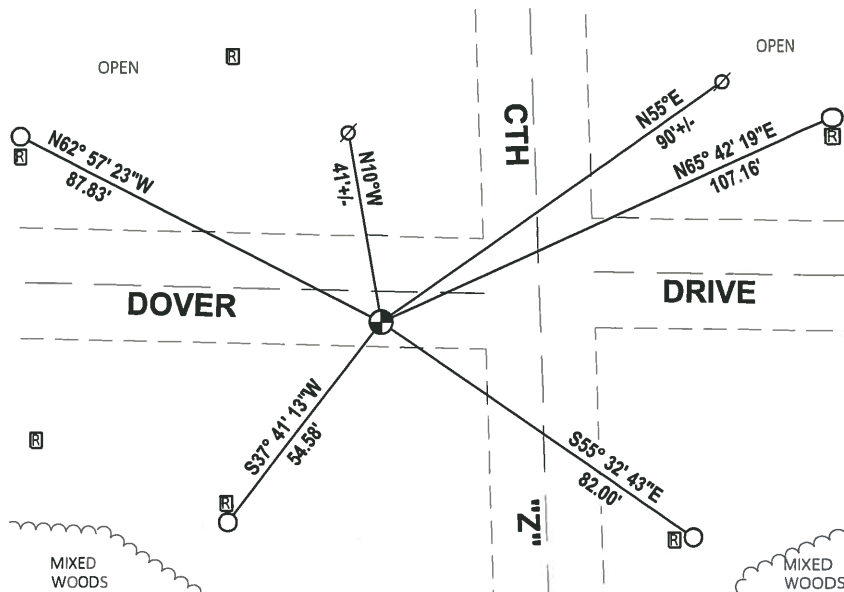
DATE 3/12/19

- TIE SKETCH

NOTE: THE CORNER LANDS ±7' SOUTH OF DOVER DRIVE AND ±34' WEST OF CTH "Z".



- FOUND 3/4" IRON ROD
- ⊕ FOUND HARRISON MONUMENT
- ⊗ WITNESS POWERPOLE
- ⊠ RIGHT-OF-WAY GUARD POST

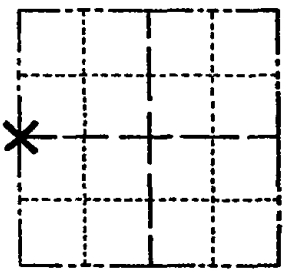


ADAMS COUNTY

Survey Monument Record

TYPE OF MONUMENT: Harrison Monument
 STATE PLANE COORDINATES: N _____
 E _____
 ELEVATION — M.S.L. DATUM: _____
 THETA ANGLE: _____
 FIELD BOOK: _____ PAGE _____

CORNER NO. 716
 SECTION 20
 TOWN 17
 RANGE 5



LOCATION
(Indicated by 'X')

SEAL:

BASIS FOR MONUMENT LOCATION

(Use reverse side if necessary)

Show info such as: History of corner, with reference to Vol. and pg. dates, surveyor; exact description of monument replaced; if location computed, by taped or EDM traverse; landowner remarks, etc.

Ran EDM/transit traverse of the entire area. Set corner by doubling over line from center of section and 40 corner to the east. These corners are existing concrete monuments.

MON & TIES OK BS-N 9/28/80
 " " 5/30/85 DK
 2-GONE, 1-NEW 6-25-90 JG
 2 GONE 3 NEW 8-24-94 JG-SS
 TIES OK, 2-7-00, JG-SS
 2-GONE 2-NEW 2-15-05 JG-DA
 2 NEW TIES - 12-17-10 SS



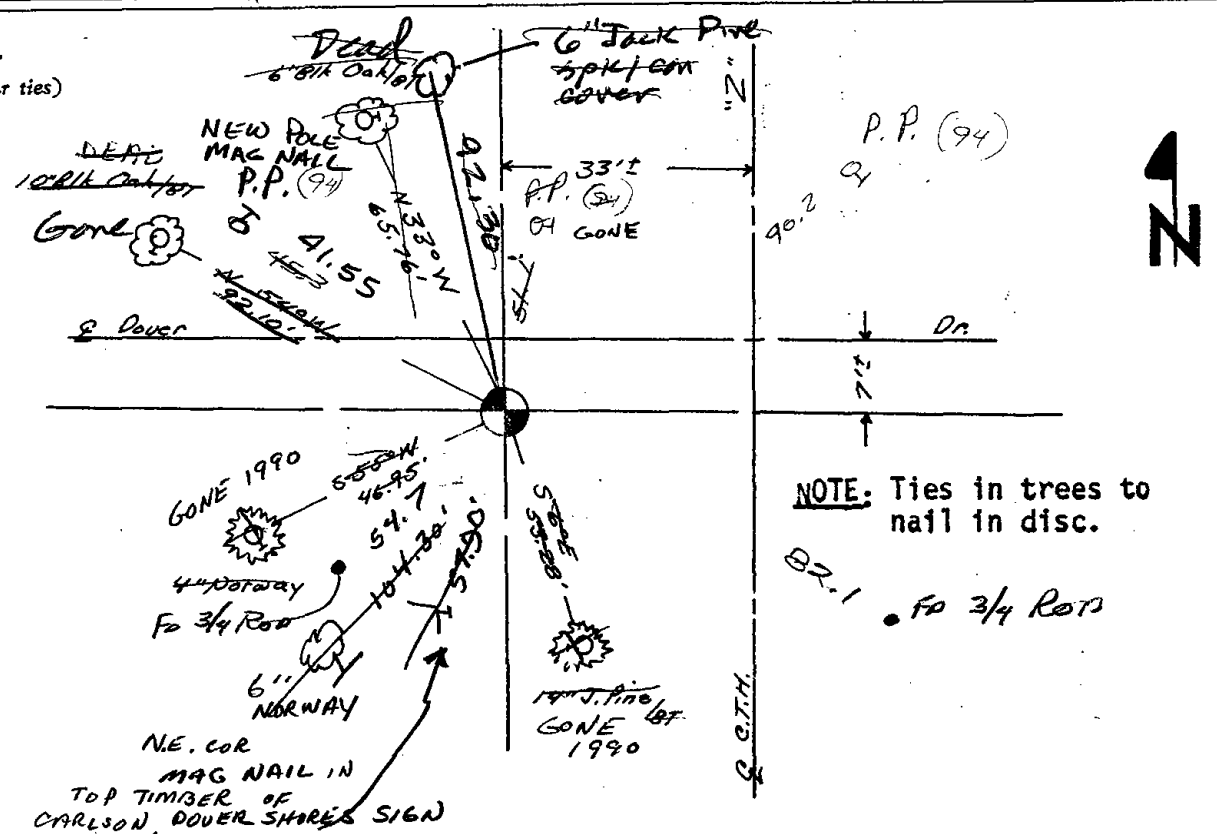
CERTIFIED CORRECT:

Dale C. Hagen
 Registered Land Surveyor
 DATE: 6/3/75

April 74 Km Carlson

TIE SKETCH

(Show at least four ties)



NOTE: Ties in trees to nail in disc.

82.1 fo 3/4 Rod