

20
SECTION

17
TOWN

05
RANGE

ADAMS COUNTY

COUNTY CORNER NO: 76

ROMPORTOL ID: 41705202000

PUBLIC LAND SURVEY MONUMENT RECORD

TYPE OF MONUMENT: HARRISON
ADAMS COUNTY COORDINATES, NAD 83 (2007)

N. 205354.785

E. 504699.805

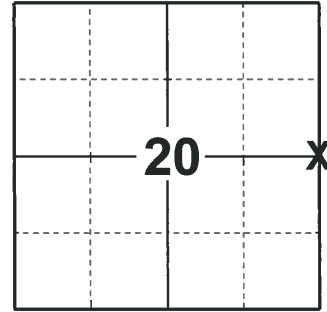
ELEVATION- - - - - DATUM - - - - -

FIELD WORK DATE: 01/30/2019

BASIS FOR MONUMENT LOCATION

1975 - PLS-1103 SET CORNER FROM EXISTING CONCRETE TIE MONUMENTS. THIS CORNER MATCHES EXISTING EVIDENCE VERY WELL.

2076 - PLS-2675 FOUND HARRISON MONUMENT 12" BELOW THE ROAD SURFACE AND DID NOT RECOVER ANY EXISTING TIES OR WITNESSES. ACCEPTED THE HARRISON MONUMENT AS THE CORNER. SET 3 NEW TIES AND MEASURED TO A FOUND PROPERTY IRON.



LOCATION

(INDICATE CORNER BY "X")

SEAL:



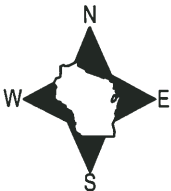
DATA SHOWN HERE ON THIS TIE SHEET IS CORRECT AND COMPLETE TO THE BEST OF MY KNOWLEDGE AND BELIEF.

PROFESSIONAL LAND SURVEYOR

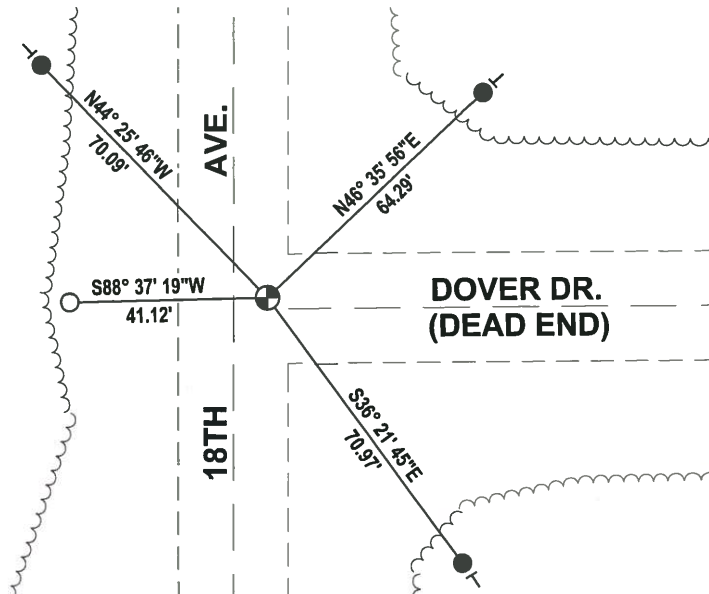
DATE 3/12/19

- TIE SKETCH

NOTE: THE CORNER LANDS 7.5± EAST OF THE CENTERLINE OF 18TH AVE. AND 2.3± NORTH OF CENTERLINE OF DOVER DR.



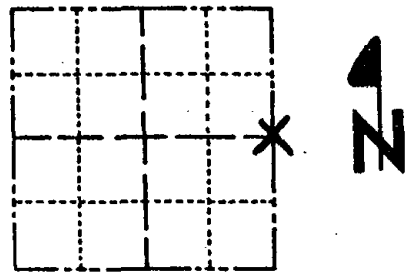
- SET 3/4" x 18" IRON REBAR, 1.50#/FT
- FOUND 3/4" IRON ROD
- ⊕ FOUND HARRISON MONUMENT
- VINYL "T" POST



ADAMS COUNTY
Survey Monument Record

CORNER NO. 715⁽⁷⁶⁾
 SECTION 20
 TOWN 17
 RANGE 5

TYPE OF MONUMENT: Harrison Monument
 STATE PLANE COORDINATES: N _____
 E _____
 ELEVATION — M.S.L. DATUM: _____
 THETA ANGLE: _____
 FIELD BOOK: _____ PAGE _____



LOCATION
 (Indicated by 'X')

BASIS FOR MONUMENT LOCATION

(Use reverse side if necessary)
 Show info such as: History of corner, with reference to Vol. and pg. dates, surveyor; exact description of monument replaced; if location computed, by taped or EDM traverse; landowner remarks, etc.

SEAL:



Set corner from existing concrete tie monuments.
 This corner matches existing evidence very well.

MON + TIES OK 8/27/80 RN-TH
 MAY 21 '83 Ken Carlson
 6-7-95 M. Carlin New tie
 1-10-00, 3-GONE 3-NEW DISTANCES ARE
 SLOPED TAPED, JG-SS
 ALL OK, 2-10-05 - JG-SS
 2-16-10 SS

CERTIFIED CORRECT:
Dale C. Hagen
 Registered Land Surveyor
 DATE: 6/3/78

TIE SKETCH

(Show at least four ties)

NOTE:
 Ties in trees to nail in disc.

