

23  
SECTION

17  
TOWN

05  
RANGE

# ADAMS COUNTY

COUNTY CORNER NO: 79  
ROMPORTOL ID: 41705232000

## PUBLIC LAND SURVEY MONUMENT RECORD

TYPE OF MONUMENT: HARRISON  
ADAMS COUNTY COORDINATES, NAD 83 (2007)

N. 205503.981

E. 520510.550

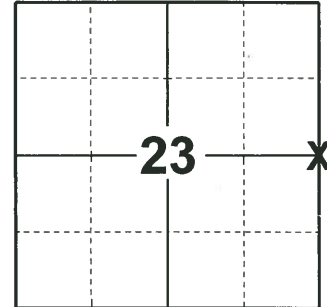
ELEVATION- \_\_\_\_\_ DATUM \_\_\_\_\_

FIELD WORK DATE: 01/07/2019

### BASIS FOR MONUMENT LOCATION

1976 - PLS-922 RESEARCHED ADAMS COUNTY SURVEY RECORDS AND NO RE-SURVEYS WERE ON FILE. RAN A EXTENSIVE EDM TRAVERSE AND MADE A THROUGH FIELD SEARCH. SET HARRISON MONUMENT ON LINE BETWEEN NE CORNER AND SE CORNER OFF FROM OLD NON-MAINTAINED EAST WEST FENCE. FIT OCCUPATION OF SECTION GOOD.

2019 - PLS-2675 FOUND HARRISON MONUMENT 4" BELOW THE WATER LINE AND 1 WITNESS. THE MONUMENT AGREES WITH THE 1 WITNESS. ACCEPTED THE HARRISON MONUMENT AS THE CORNER LOCATION. SET 4 NEW TIES AND MEASURED TO THE TIES AND WITNESS.



**LOCATION**  
(INDICATE CORNER BY "X")

SEAL:

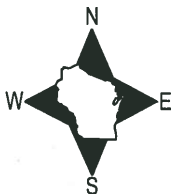


DATA SHOWN HERE ON THIS TIE SHEET IS CORRECT AND COMPLETE TO THE BEST OF MY KNOWLEDGE AND BELIEF.

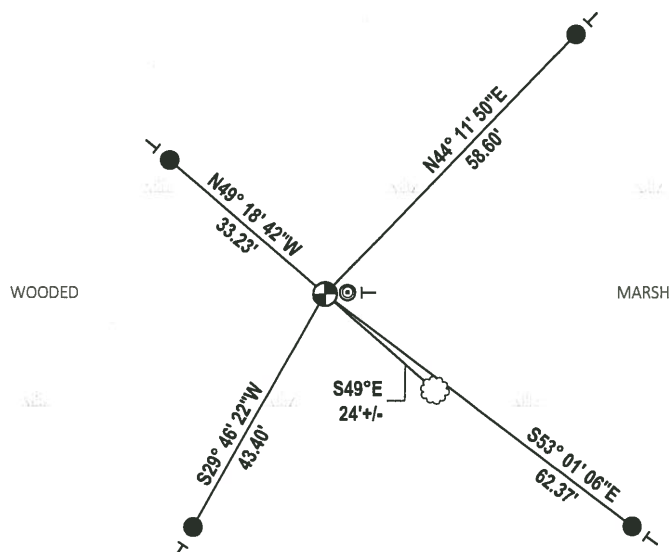
PROFESSIONAL LAND SURVEYOR

DATE 3/12/19

### TIE SKETCH



- SET 3/4" x 48" IRON REBAR, 1.50#/FT
- ⊙ FOUND 2-3/8" O.D. IRON PIPE
- ⊕ FOUND HARRISON MONUMENT
- | VINYL "T" POST
- ☼ WITNESS TREE



# ADAMS COUNTY

## Survey Monument Record

TYPE OF MONUMENT: 30" STANDARD HARRISON

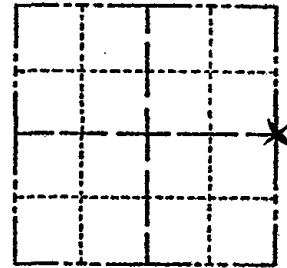
STATE PLANE COORDINATES: N \_\_\_\_\_  
E \_\_\_\_\_

ELEVATION — M.S.L. DATUM: \_\_\_\_\_

THETA ANGLE: \_\_\_\_\_

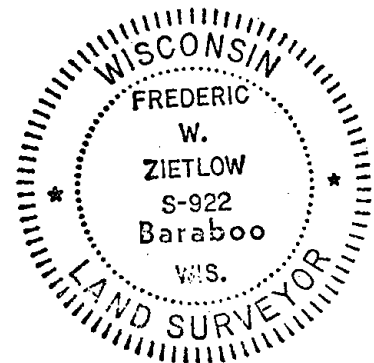
FIELD BOOK: \_\_\_\_\_ PAGE \_\_\_\_\_

CORNER NO. 79  
SECTION 23  
TOWN 17N  
RANGE 5E



LOCATION  
(Indicated by 'X')

SEAL:



CERTIFIED CORRECT:

*Frederic W. Zietlow*

Registered Land Surveyor

DATE: DECEMBER 30, 1976

### BASIS FOR MONUMENT LOCATION

(Use reverse side if necessary)

Show info such as: History of corner, with reference to Vol. and pg, dates, surveyor; exact description of monument replaced; if location computed, by taped or EDM traverse; landowner remarks, etc.

RESEARCHED ADAMS COUNTY SURVEY RECORDS AND NO RESURVEYS WERE ON FILE. RAN AN EXTENSIVE EDM TRAVERSE AND MADE A THOROUGH FIELD SEARCH SET CORNER ON LINE BETWEEN NE COR. & SE COR. OFF FROM OLD NON-MAINTAINED E-W FENCE. FIT OCCUPATION OF SECTION GOOD.

MON. & TIES OK 11-8K 1/14/81

MON. O.K. - NEEDS TIES - NOTHING AVAILABLE FOR TIES - 10-21-85 M.B.

3-GONE, 3-NEW 8-24-90 SG

ALL OK 1-6-95 JG-BS  
OK - 1-6-00 SJS

**TIE SKETCH** 2-NEW TIES MON. UNDERWATER, 2-21-05, JG-DA  
OK 2-12-10 SS

(Show at least four ties)

