

22 SECTION 17 TOWN 05 RANGE

ADAMS COUNTY

COUNTY CORNER NO: 89
ROMPORTOL ID: 41705220000

PUBLIC LAND SURVEY MONUMENT RECORD

TYPE OF MONUMENT: HARRISON
ADAMS COUNTY COORDINATES, NAD 83 (2007)

N. 202788.578

E. 515300.895

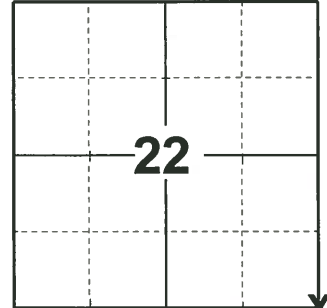
ELEVATION- _____ DATUM _____

FIELD WORK DATE: 01/17/2019

BASIS FOR MONUMENT LOCATION

1976 - PLS-1103 RAN EDM TRAVERSE AROUND SECTIONS 25 AND 26, TYING INTO THE TRAVERSE ACROSS THE SOUTH SIDE OF THESE SECTIONS BY MIDSTATES ASSOCIATES. EXCAVATION WITH BACKHOE YIELDED NO EVIDENCE OF THE ORIGINAL CORNER OR ANY REMONUMENTATION. VERY LIKELY THAT THIS CORNER WAS DESTROYED BY ROAD CONSTRUCTION. SET HARRISON MONUMENT ON EXTENSION OF VERY OLD FENCE TO THE SOUTH, AND AFTER EVALUATING POSSESSION EVIDENCE TO THE WEST, NORTH, SOUTH AND EAST, SET CORNER ON CENTER LINE OF CTH "F".

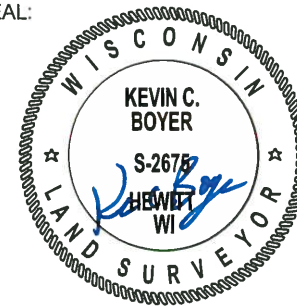
2019 - PLS-2675 FOUND MAG NAIL IN THE ROAD SURFACE, REMOVED AND FOUND HARRISON MONUMENT 4" BELOW, 1 TIE, AND 1 PROPERTY CORNER. THE MONUMENT AGREES WITH THE EXISTING TIE. ACCEPTED THE HARRISON MONUMENT AS THE CORNER LOCATION. SET 3 NEW TIES AND MEASURED TO THE TIES, PROPERTY IRON, AND WELL POINT.



LOCATION

(INDICATE CORNER BY "X")

SEAL:



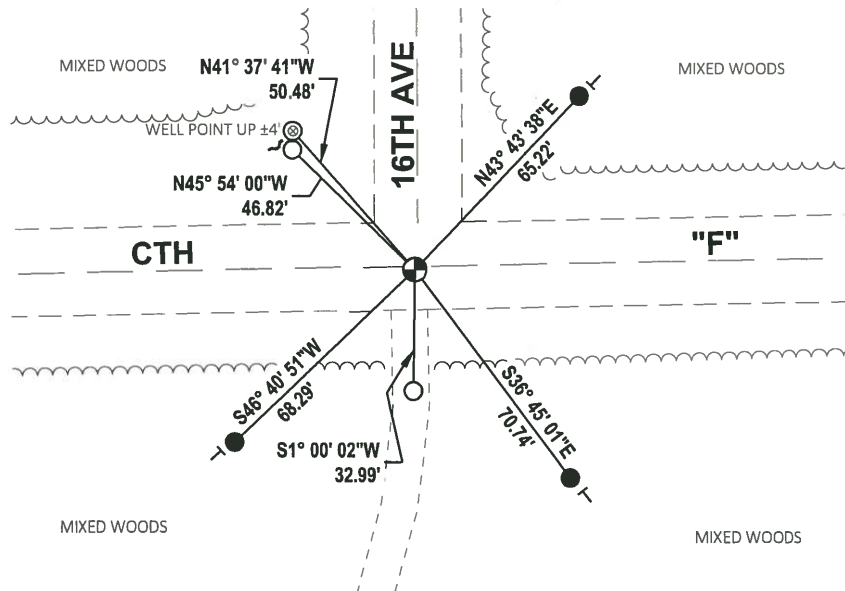
DATA SHOWN HERE ON THIS TIE SHEET IS CORRECT AND COMPLETE TO THE BEST OF MY KNOWLEDGE AND BELIEF.

PROFESSIONAL LAND SURVEYOR

DATE 3/12/19

TIE SKETCH

NOTE: THE CORNER FALLS 1½ SOUTH OF CTH "F" CENTER LINE.



- SET 3/4" x 18" IRON REBAR, 1.50#/FT
- FOUND 3/4" IRON ROD
- ⊙ FOUND 1-1/2" O.D. IRON PIPE
- ⊕ FOUND HARRISON MONUMENT
- ↗ STEEL FENCE POST
- ↖ VINYL "T" POST

ADAMS COUNTY

Survey Monument Record

TYPE OF MONUMENT: Harrison Monument

STATE PLANE COORDINATES: N _____

E _____

ELEVATION — M.S.L. DATUM: _____

THETA ANGLE: _____

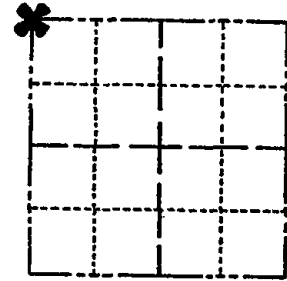
FIELD BOOK: 37 PAGE 41

CORNER NO. 1020

SECTION 26

TOWN 17

RANGE 5



LOCATION (Indicated by 'X')



BASIS FOR MONUMENT LOCATION

(Use reverse side if necessary)

Show info such as: History of corner, with reference to Vol. and pg, dates, surveyor; exact description of monument replaced; if location computed, by taped or EDM traverse; landowner remarks, etc.

SEAL:



Ran EDM/T2 traverse around Sections 25 and 26, tying into the traverse across the South side of these sections by Midstates, Assoc.

Excavation with backhoe yielded no evidence of the original corner or any remonumentation. Very likely that this corner was destroyed by road construction.

Set corner on extension of very old fence to the South, and after evaluating possession evidence to the West, North, South and East, set corner on centerline of C.T.H. 'F'.

Corner set 6-8-76.

CERTIFIED CORRECT:

Dale C. Hagen
Registered Land Surveyor

DATE: Sept. 20, 1976.

MON OK RN-TH 8/27/80
" " 5/28/85 O.K

TIE SKETCH ALL OK 2-5-90 KZ

(Show at least four ties) 1-GONE 1-NEW TIE, 2-7-00 JLSS
OK, 2-7-05-JG
OK 2-12-10 SS 16" Blk Oak/8T

11/21/2010 GA-SS OK

NOTE:

Ties in trees to nail in disc in blaze.

