

23 SECTION 17 TOWN 05 RANGE

ADAMS COUNTY

COUNTY CORNER NO: 91
ROMPORTOL ID: 41705230000

PUBLIC LAND SURVEY MONUMENT RECORD

TYPE OF MONUMENT: HARRISON (BROKEN-TOP)
ADAMS COUNTY COORDINATES, NAD 83 (2007)

N. 202881.063

E. 520548.821

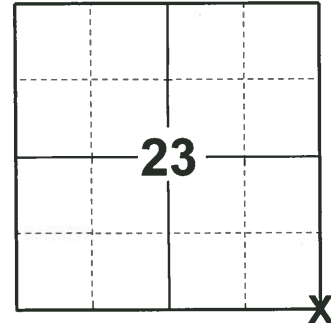
ELEVATION- _____ DATUM _____

FIELD WORK DATE: 01/17/2019

BASIS FOR MONUMENT LOCATION

1975 - PLS 1894 COMPUTED FROM TAPED TRAVERSE. FOUND NO EVIDENCE OF OLD CORNER WHEN DUG BY BACKHOE. FOUND EXISTING FENCE LINE WHICH EXTENDS BACK APPROXIMATELY 300 FT. FROM EDGE OF ROAD.

2019 - PLS 2675 FOUND MAGNAIL IN ROAD SURFACE, REMOVED, FOUND HARRISON BROKEN TOP 20" BELOW, AND 2 TIES. THE MONUMENT AGREES WITH THE 2 TIES. ACCEPTED THE HARRISON BROKEN TOP AS THE CORNER. SET 4 NEW TIES AND MEASURED TO THE EXISTING TIES.



LOCATION

(INDICATE CORNER BY "X")

SEAL:



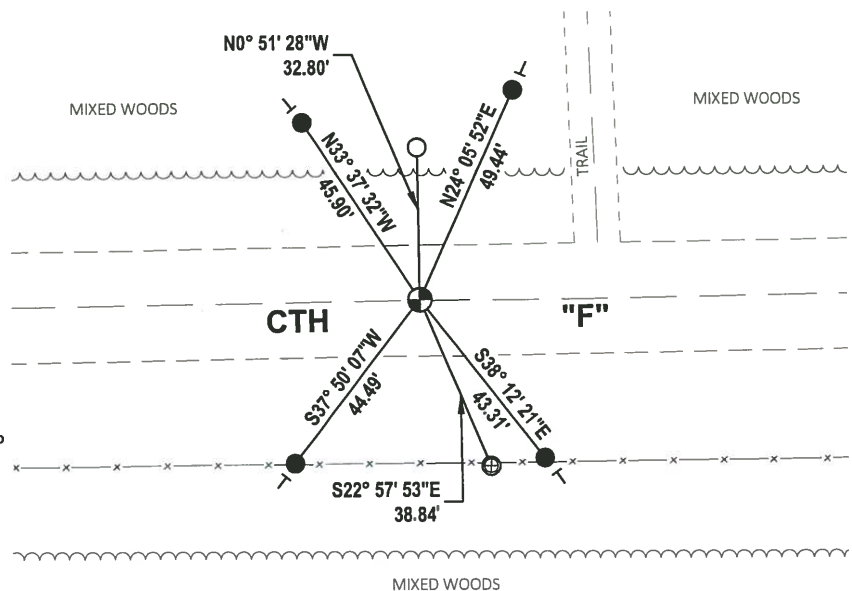
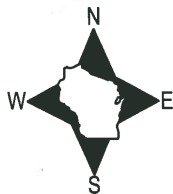
DATA SHOWN HERE ON THIS TIE SHEET IS CORRECT AND COMPLETE TO THE BEST OF MY KNOWLEDGE AND BELIEF.

PROFESSIONAL LAND SURVEYOR

DATE 3/12/19

- TIE SKETCH -

NOTE: THE CORNER LANDS 1.5± NORTH OF CENTERLINE OF CTH "F"



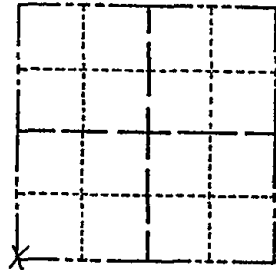
- SET 3/4" x 18" IRON REBAR, 1.50#/FT
- FOUND 3/4" IRON ROD
- ⊕ FOUND 1" O.D. IRON PIPE W/90° ELBOW
- ⊙ FOUND HARRISON MONUMENT BROKEN TOP
- VINYL "T" POST

ADAMS COUNTY

Survey Monument Record

TYPE OF MONUMENT: HARRISON
 STATE PLANE COORDINATES: N _____
 E _____
 ELEVATION — M.S.L. DATUM: _____
 THETA ANGLE: _____
 FIELD BOOK: 86 PAGE 122

CORNER NO. 595
 SECTION 24
 TOWN 17
 RANGE 5



LOCATION
(Indicated by 'X')

SEAL:



BASIS FOR MONUMENT LOCATION

(Use reverse side if necessary)

Show info such as: History of corner, with reference to Vol. and pg, dates, surveyor; exact description of monument replaced; if location computed, by taped or EDM traverse; landowner remarks, etc.

Computed from taped traverse.
 Found no evidence of old corner
 when dug by backhoe. Found existing
 fence line which extends back
 approximately 300 ft. from edge
 of road.

11-22-70 2 NEW TIES GR-SS
 CORNER O.K. 10/30/75 D.M. - S.E.
 MON OK, NEW TIES 8/27/80 RN-TH
 " " 9-30-85 MB-SS
 1-GONE, 3-NEW 6-20-90 JG

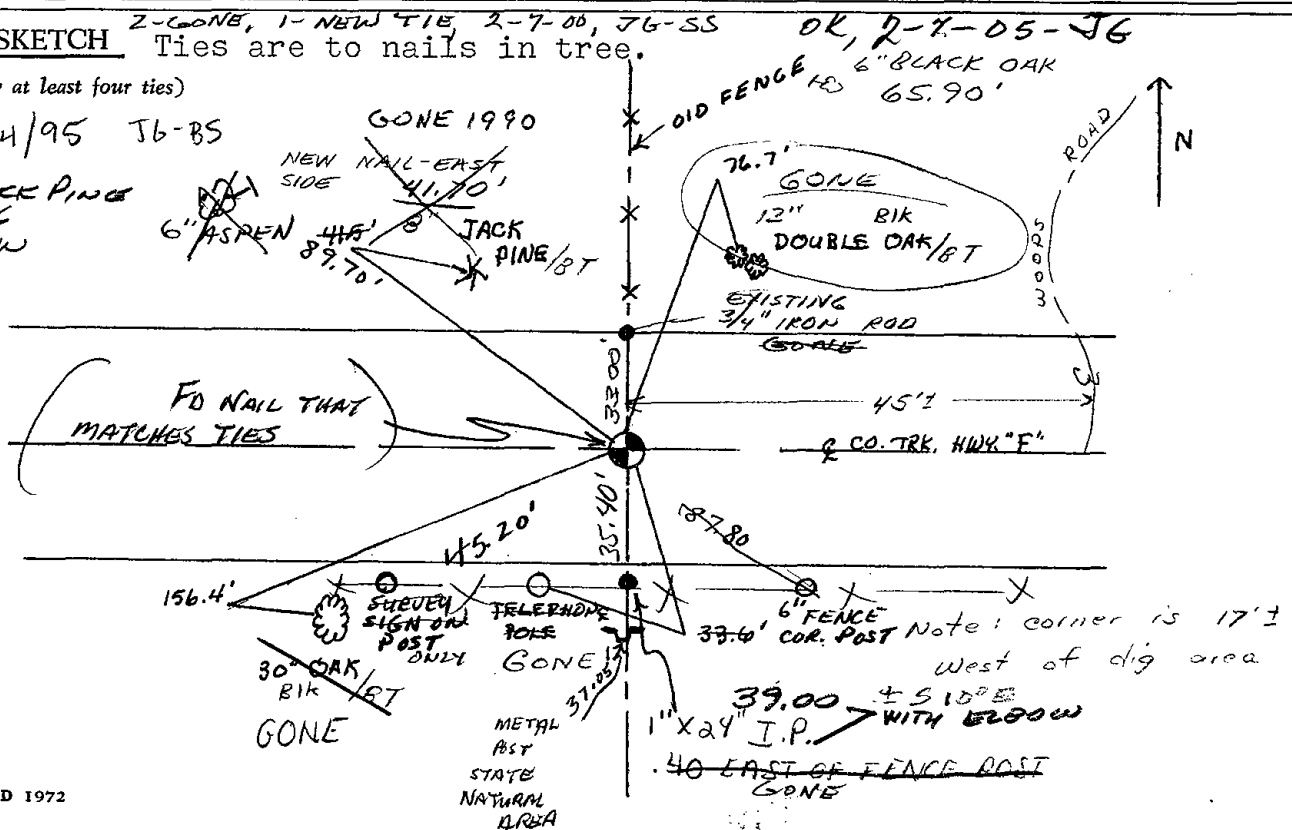
CERTIFIED CORRECT:

R. K. Saylor
 Registered Land Surveyor

DATE: 2/5/15

TIE SKETCH

(Show at least four ties)



11-22-10 GR-SS FO NAIL

6" BLK OAK
OK '10
FB

6" JACK
PINE 2010
68.06
± N 30° W

65.90



45.20

FO STEEL POST '2010
± 12" EXPOSED

39.0
± 10° E
FO 1" IP/ELBOW
2010

note
from
RK Saylor
re # # 595

SW Corner----Sec. 24, T.17N., R.5E. Adams County

We did find the old fence wire and marked same with surveyor's tape. It extended back approximately 300 ft. from the edge of the road. Our monument is set on this fence line. The trail you marked on the tie sheet is a new one that the present owner bulldozed.