

30
SECTION

17
TOWN

05
RANGE

ADAMS COUNTY

COUNTY CORNER NO: 95

ROMPORTOL ID: 41705302000

PUBLIC LAND SURVEY MONUMENT RECORD

TYPE OF MONUMENT: HARRISON (BROKEN-TOP)
ADAMS COUNTY COORDINATES, NAD 83 (2007)

N. 199940.646

E. 499436.114

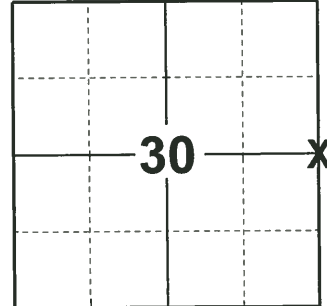
ELEVATION- - - - DATUM - - - -

FIELD WORK DATE: 02/21/2019

BASIS FOR MONUMENT LOCATION

1975 - PLS-976 FOUND BRASS TABLET IN CONCRETE MONUMENT AS CALLED BY R.K. SAYLER, L.S. 9/6/73. TIED EXISTING MONUMENT, REMOVED SAME AND REPLACED WITH HARRISON STD. MONUMENT.

2019 - PLS-2675 FOUND HARRISON MONUMENT (BROKEN-TOP) 12" BELOW THE GROUND, AND 3 WITNESSES. THE MONUMENT AGREES WITH THE WITNESSES. ACCEPTED THE HARRISON MONUMENT (BROKEN-TOP) AS THE CORNER. SET 2 NEW TIES. MEASURED TO 2 FOUND PROPERTY IRONS AND WITNESSES.



LOCATION
(INDICATE CORNER BY "X")

SEAL:



DATA SHOWN HERE ON THIS TIE SHEET IS CORRECT AND COMPLETE TO THE BEST OF MY KNOWLEDGE AND BELIEF.

PROFESSIONAL LAND SURVEYOR

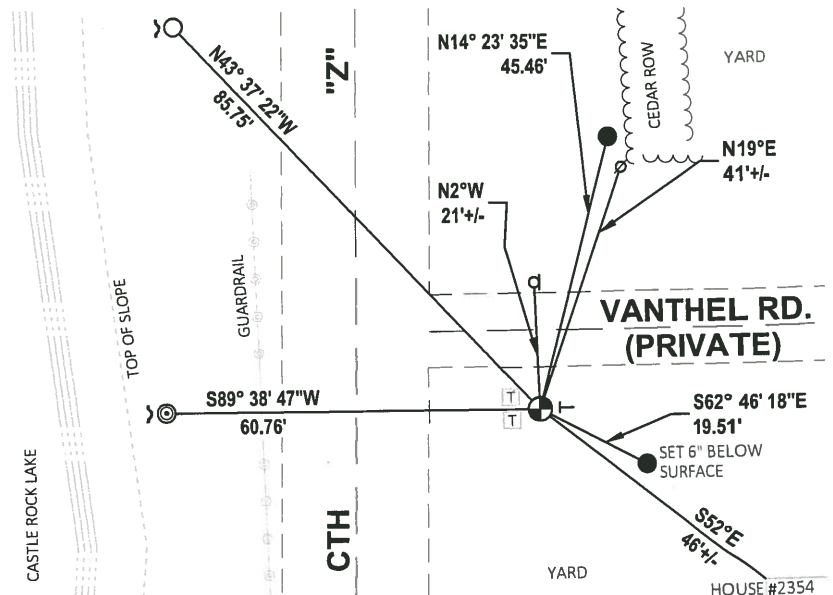
DATE 3/12/19

- TIE SKETCH

NOTE: THE CORNER LANDS 30'± EAST OF CENTERLINE OF CTH "Z" AND 13'± SOUTH OF CENTERLINE OF VANTHEL RD.



- SET 3/4" x 18" IRON REBAR, 1.50#/FT
- FOUND 3/4" IRON ROD
- ⊙ FOUND 2-3/8" O.D. IRON PIPE
- ⊕ FOUND HARRISON MONUMENT (BROKEN-TOP)
- ∅ WITNESS LIGHT POLE
- ┘ STEEL FENCE POST
- VINYL "T" POST
- ⊠ TELEPHONE PEDESTAL



ADAMS COUNTY

Survey Monument Record

TYPE OF MONUMENT: HARRISON STD

STATE PLANE COORDINATES: N _____

E _____

ELEVATION — M.S.L. DATUM: _____

THETA ANGLE: _____

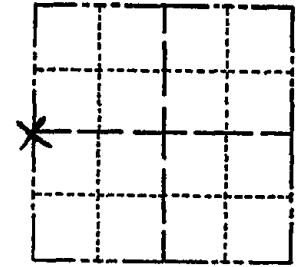
FIELD BOOK: LL. PAGE _____

CORNER NO. 847 ⁹⁵

SECTION 29

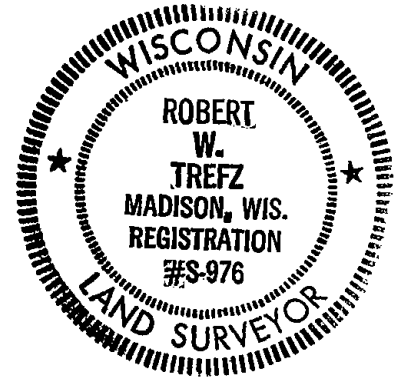
TOWN 17N

RANGE 5E



LOCATION
(Indicated by 'X')

SEAL:



BASIS FOR MONUMENT LOCATION

(Use reverse side if necessary)

Show info such as: History of corner, with reference to Vol. and pg, dates, surveyor; exact description of monument replaced; if location computed, by taped or EDM traverse; landowner remarks, etc.

FOUND BRASS TABLET IN CONC. MONUMENT AS CALLED BY R.K. SAYLER, L.S. 9/6/73. TIED EXISTING MONUMENT, REMOVED SAME & REPLACED WITH HARRISON STD. MONUMENT

- MON OK 4/8/80 BS-SS
- ALL OK 5/30/85 D.K.
- ALL OK 6-25-90 JG
- 2-NEW 8-24-94 JG-SS
- ALL OK 3-28-00 JG-M.T.
- OK 2-14-05 DA/JG
- " 12-16-10 SS

CERTIFIED CORRECT:

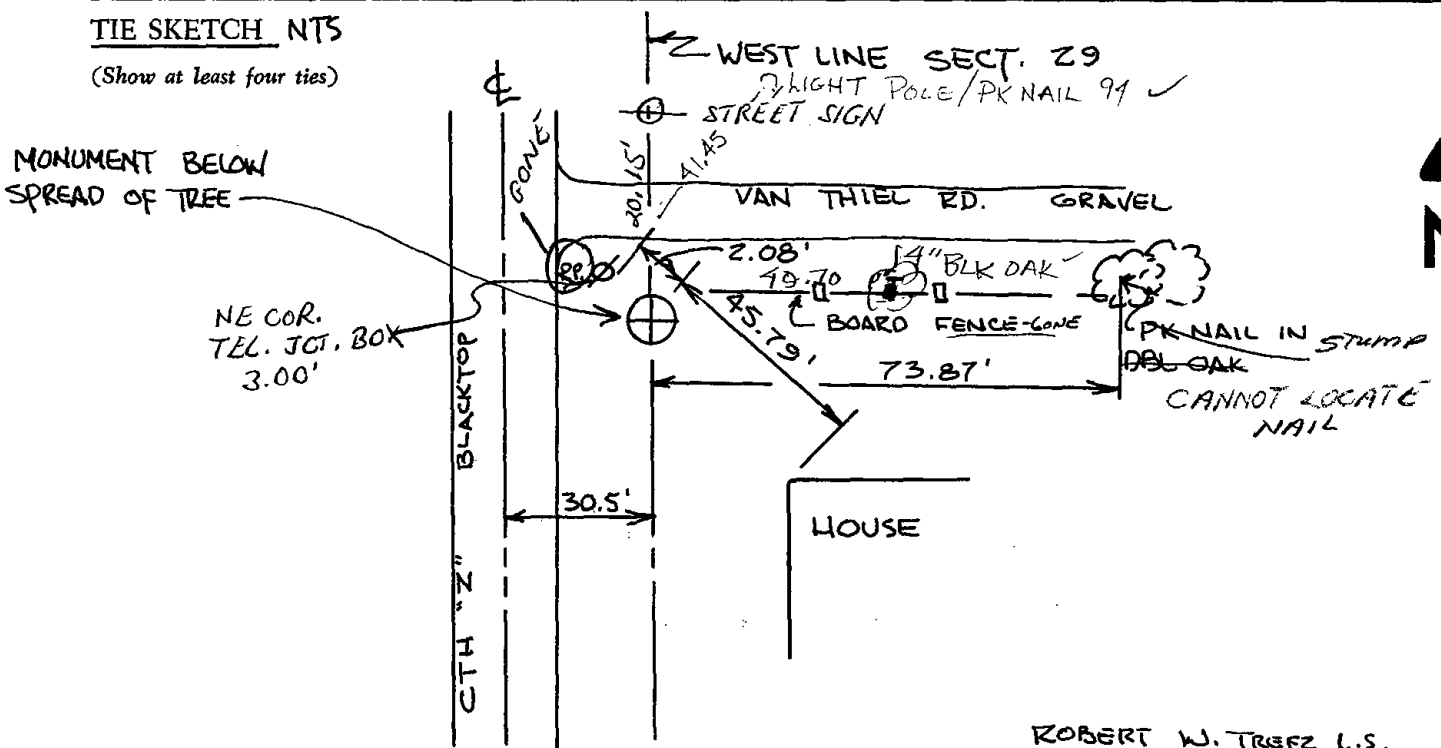
Robert W. Trefz

Registered Land Surveyor

DATE: 10/20/75

TIE SKETCH NTS

(Show at least four ties)



ROBERT W. TREFZ L.S.
3644 LAKE MENDOTA DR
MADISON, WI 53705