

ADAMS COUNTY

PUBLIC LAND SURVEY MONUMENT RECORD

TYPE OF MONUMENT: 2-1/2" O.D. IRON PIPE
ADAMS COUNTY COORDINATES, NAD 83 (2007)

N. 200076.375

E. 509978.275

ELEVATION- DATUM

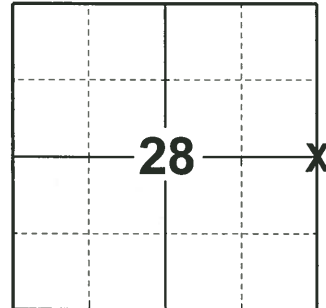
FIELD WORK DATE: 01/08/2019

BASIS FOR MONUMENT LOCATION

1979 - PLS-1478 SET EQUIDISTANT AND ON LINE BETWEEN ADJACENT SECTION CORNERS.

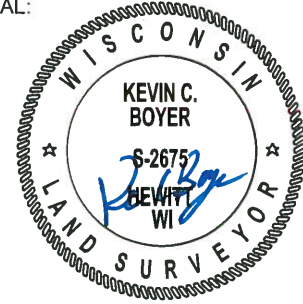
2010 - PLS-1478 THE ADAMS COUNTY SURVEY MONUMENT RECORD CURRENTLY ON FILE REFERENCED A HARRISON STANDARD PLACED EQUIDISTANT AND ON LINE BETWEEN ADJACENT SECTION CORNERS. SEVERAL SURVEYS ABUTTING SECTIONS 27 AND 28 HAVE USED THE EQUIDISTANT LOCATION. DURNING A SURVEY FOR JAMES AND JUDITH KANE, PATRICK VERAGUTH FOUND THE MONUMENT TO HAVE BEEN PLACED 224.7 FT. SOUTH OF INTENDED LOCATION. THE CORRECT LOCATION FOR THE CORNER IS THE 2-1/2" PIPE SHOWN ON CSM #5293. REMOVED THE HARRISON STANDARD.

2019 - PLS-2675 FOUND 2-1/2" O.D. IRON PIPE 12" ABOVE THE WATER LINE AND 4 WITNESS TREES. THE MONUMENT AGREES WITH ALL 4 WITNESS TREES. ACCEPTED THE 2-1/2" O.D. IRON PIPE AS THE CORNER. SET 4 NEW TIES AND MEASURED TO THE WITNESS TREES.



LOCATION
(INDICATE CORNER BY "X")

SEAL:

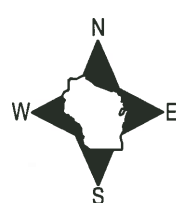


DATA SHOWN HERE ON THIS TIE SHEET IS CORRECT AND COMPLETE TO THE BEST OF MY KNOWLEDGE AND BELIEF.

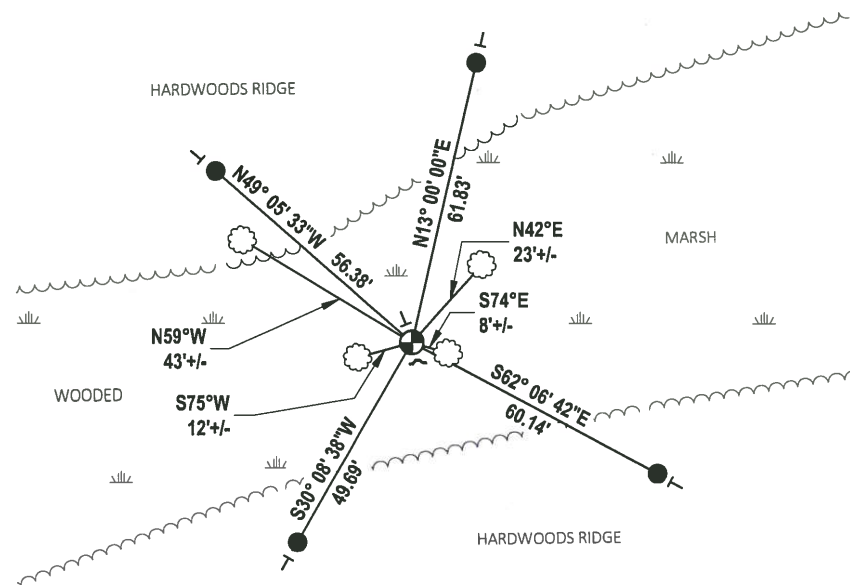
PROFESSIONAL LAND SURVEYOR

DATE 3/12/19

TIE SKETCH



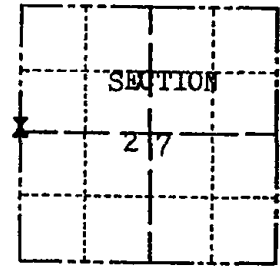
- SET 3/4" x 18" IRON REBAR, 1.50#/FT
- ⊕ FOUND 2-1/2" O.D. IRON PIPE
- ~ STEEL FENCE POST
- VINYL "T" POST
- ☼ WITNESS TREE



Government Land Corner Certificate

ADAMS County
 TYPE OF MONUMENT: Harrison Standard
 STATE PLANE COORDINATES: N _____
 E _____
 ELEVATION — M.S.L. DATUM: _____
 THETA ANGLE: _____
 FIELD BOOK: 54 PAGE 52
 DRAWN BY: G. Rhinehart

CORNER NO. 97 97
 SECTION 27
 TOWN 17
 RANGE 5



LOCATION
(Indicated by 'X')

BASIS FOR MONUMENT LOCATION

Show info such as: History of corner, with reference to Vol. and pg., dates, surveyor; exact description of monument replaced; if location computed, by taped or EDM traverse; landowner remarks, etc. (Use reverse side if necessary)

Set Equidistant and on line between adjacent Section Corners.

*HARRISON IN WRONG
 LOCATION - SEE TIE SHEET
 DATED 12-14-10*

SEAL:



DATA SHOWN HERE ON CERTIFIED CORRECT:

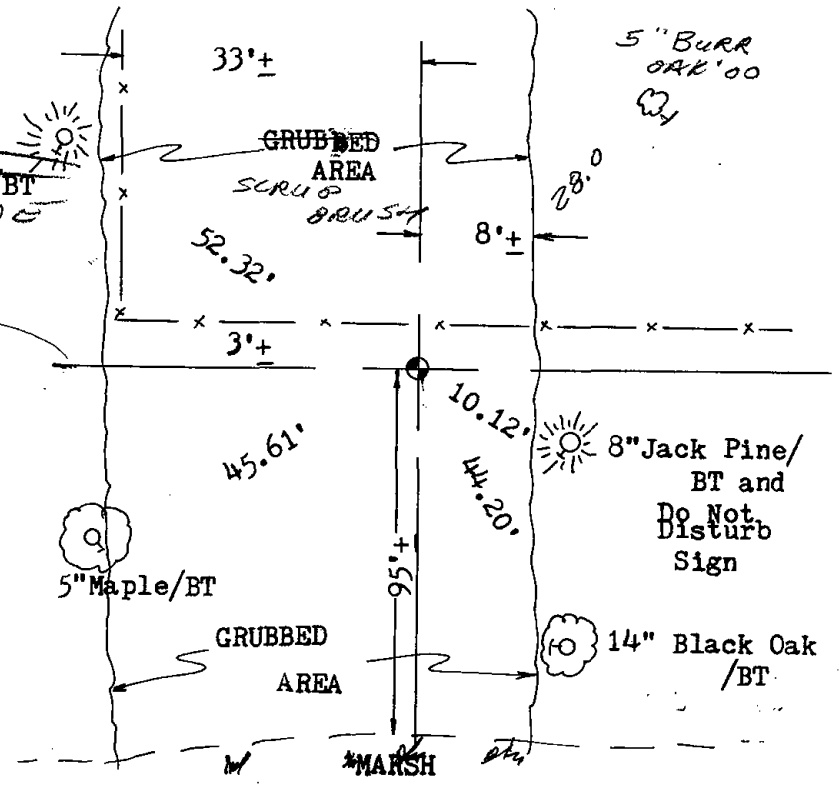
Gregory P Rhinehart
 Registered Land Surveyor

DATE: 4-30 -79

TIE SKETCH

Show at least four ties, also fence lines, roads, topo, size and type of witness trees' and if off road - best way to arrive at corner.

*HARRISON ±145' South
 From SIGNS MARKING
 STATE NATURAL AREA*



MAINTENANCE RECORD

Date	Init.	Remarks
8/27/80	RN-TH	MON OK
5/29/85	DK	ALL OK
2-14-00	SS	1 GONG - 1 NEW
1-13-06	SG-SS	OK