

28 SECTION 17 TOWN 05 RANGE

ADAMS COUNTY

COUNTY CORNER NO: 107
ROMPORTOL ID: 41705280000

PUBLIC LAND SURVEY MONUMENT RECORD

TYPE OF MONUMENT: HARRISON
ADAMS COUNTY COORDINATES, NAD 83 (2007)

N. 197432.452

E. 509978.058

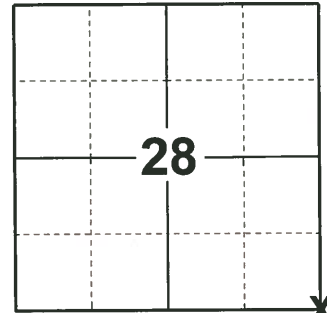
ELEVATION- - - - DATUM - - - -

FIELD WORK DATE: 01/09/2019

BASIS FOR MONUMENT LOCATION

1975 - PLS-1191 CORNER ESTABLISHED WITH DISTANCES AND BEARING'S FROM THE PLAT OF PINEORAMA CORNER NOT MONUMENTED. BOUNDARY SURVEY BY ROBERT KLEIN LOTS SURVEY BY FIRM OF PERRY-CURRINGTON FOUND ERROR IN ORIGINAL LOT STAKE OUT AND DOUBLE MONUMENTATION. ALL DISTANCES TAPED AND VERIFIED.

2019 - PLS-2675 FOUND HARRISON MONUMENT FLUSH WITH THE GROUND AND 2 WITNESS TREES. THE MONUMENT AGREES WITH BOTH WITNESS TREES. ACCEPTED THE HARRISON MONUMENT AS THE CORNER. SET 4 NEW TIES AND MEASURED TO THE EXISTING WITNESS.



LOCATION
(INDICATE CORNER BY "X")

SEAL:



DATA SHOWN HERE ON THIS TIE SHEET IS CORRECT AND COMPLETE TO THE BEST OF MY KNOWLEDGE AND BELIEF.

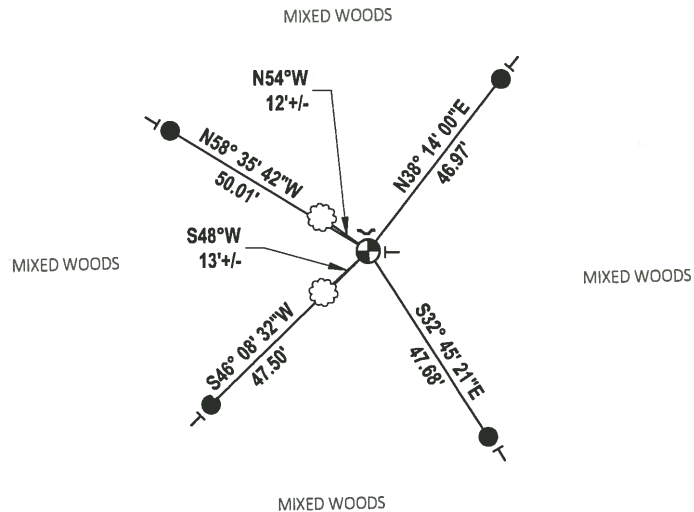
PROFESSIONAL LAND SURVEYOR

DATE 3/12/19

TIE SKETCH



- SET 3/4" x 18" IRON REBAR, 1.50#/FT
- ⊕ FOUND HARRISON MONUMENT
- ┌ STEEL FENCE POST
- └ VINYL "T" POST
- ☉ WITNESS TREE



ADAMS COUNTY

Survey Monument Record Set Harrison 5-7-75

TYPE OF MONUMENT: 2" x 30" PIPE

STATE PLANE COORDINATES: N _____

E _____

ELEVATION - M.S.L. DATUM: _____

THETA ANGLE: _____

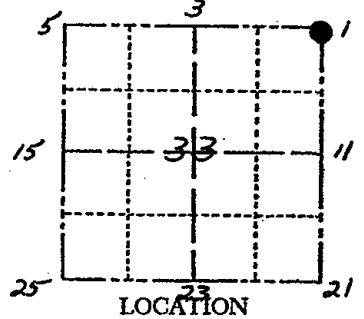
FIELD BOOK: 454 PAGE 71

CORNER NO. 608

SECTION 33

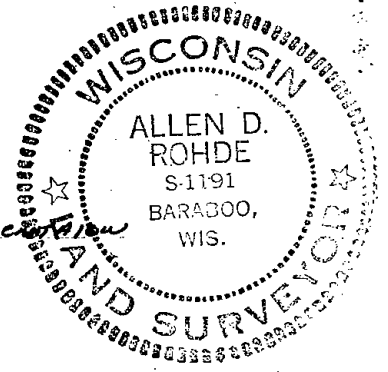
TOWN 17 N

RANGE 5 E



LOCATION (Indicated by 'X')

SEAL:



BASIS FOR MONUMENT LOCATION

(Use reverse side if necessary)

Show info such as: History of corner, with reference to Vol. and pg. dates, surveyor; exact description of monument replaced; if location computed, by taped or EDM traverse; landowner remarks, etc.

Corner established with distances & Brg's from the Plat of Pincorama

Corner Not Monumented

Boundary Survey by Robert Klein

lots Survey by firm of Perry-Carrington

Found error in Orig Lot STR OUT & double Monumented

All distances taped & Verified

OK NOV 2010 SS

1 GONE - 1 NEW 2-14-00 SS

2-NEW 2-5-90 SS

Harrison in - O.K. - 10/30/75 P.M. - S.S.

Trees painted & flagged

COR. OK 4/8/80 BS-SS

ALL OK 5/29/85 O.K.

CERTIFIED CORRECT:

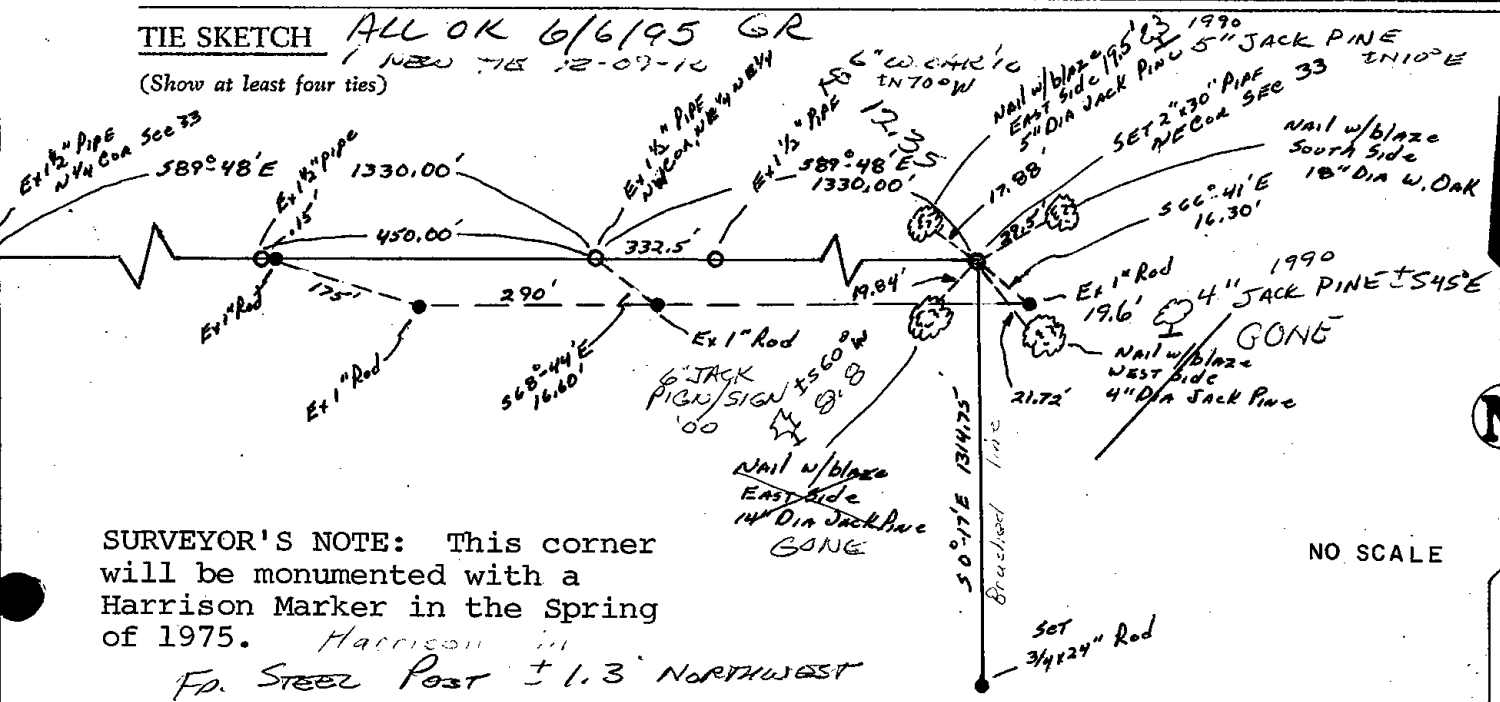
Allen Rohde

Registered Land Surveyor

DATE: 1-6-75

TIE SKETCH ALL OK 6/6/95 GR

(Show at least four ties)



SURVEYOR'S NOTE: This corner will be monumented with a Harrison Marker in the Spring of 1975.

Harrison in
FD. STEEL POST ± 1.3' NORTHWEST FROM HARRISON

NO SCALE