

26 SECTION 17 TOWN 05 RANGE

ADAMS COUNTY

COUNTY CORNER NO: 110
ROMPORTOL ID: 41705260020

PUBLIC LAND SURVEY MONUMENT RECORD

TYPE OF MONUMENT: HARRISON
ADAMS COUNTY COORDINATES, NAD 83 (2007)

N. 197550.407

E. 517879.283

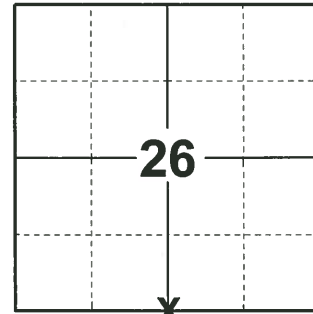
ELEVATION- - - - - DATUM - - - - -

FIELD WORK DATE: 01/10/2019

BASIS FOR MONUMENT LOCATION

1976 - PLS 922-SEARCHED IN FIELD FOR EVIDENCE OF COUNTY SURVEYOR HUGH HURLEY'S CORNER AND BEARING TREES FROM 1904. ALL EVIDENCE IS OBLITERATED. THIS CORNER WAS SET EQUIDISTANT ON LINE BETWEEN THE NE AND NW CORNERS. (SINGLE PROPORTION METHOD VIA E.D.M TRAVERSE)

2019 - PLS-2675 FOUND HARRISON MONUMENT FLUSH WITH THE GROUND AND 2 WITNESS TREES. THE MONUMENT AGREES WITH THE WITNESS TREES. ACCEPTED THE HARRISON MONUMENT AS THE CORNER. SET 4 NEW TIES AND MEASURED TO THE EXISTING WITNESS TREES.



LOCATION

(INDICATE CORNER BY "X")

SEAL:



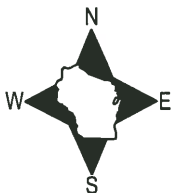
DATA SHOWN HERE ON THIS TIE SHEET IS CORRECT AND COMPLETE TO THE BEST OF MY KNOWLEDGE AND BELIEF.

PROFESSIONAL LAND SURVEYOR

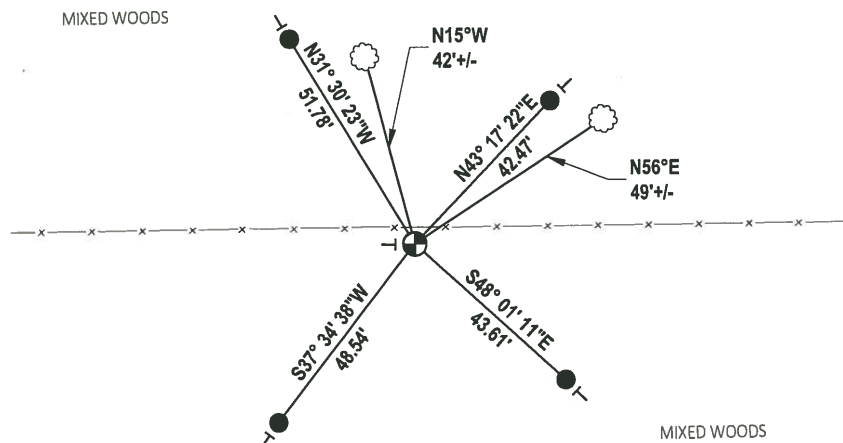
DATE 3/12/19

TIE SKETCH

NOTE: THE CORNER LANDS 3.5'± SOUTH OF FENCE.



- SET 3/4" x 18" IRON REBAR, 1.50#/FT
- ⊕ FOUND HARRISON MONUMENT
- ┌ VINYL "T" POST
- ☼ WITNESS TREE



ADAMS COUNTY

Survey Monument Record

CORNER NO. 876
 SECTION 35
 TOWN 17N
 RANGE 5E

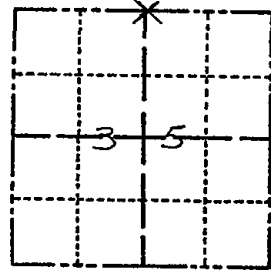
TYPE OF MONUMENT: 30" HARRISON MONUMENT

STATE PLANE COORDINATES: N 43° 54' 31.1"
 HAND HELD GPS E 089° 52' 03.6"

ELEVATION — M.S.L. DATUM: _____

THETA ANGLE: _____

FIELD BOOK: _____ PAGE _____

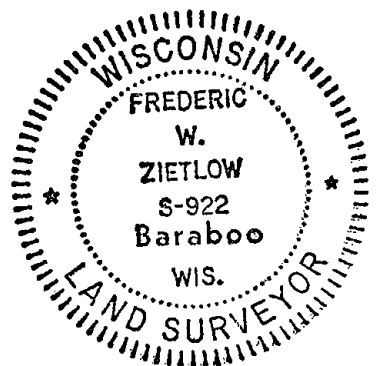


BASIS FOR MONUMENT LOCATION

(Use reverse side if necessary)

Show info such as: History of corner, with reference to Vol. and pg, dates, surveyor; exact description of monument replaced; if location computed, by taped or EDM traverse; landowner remarks, etc.

SEAL: _____
 LOCATION (Indicated by 'X')



SEARCHED IN FIELD FOR EVIDENCE OF COUNTY SURVEYOR HUGH HURLEY'S CORNER & BEARING TREES FROM 1904. ALL EVIDENCE IS OBLITERATED. THIS CORNER WAS SET EQUA-DISTANT ON LINE BETWEEN THE NE & NW CORN. (SINGLE PROPORTION METHOD VIA EDM. TRAVERSE)

1 NEW TIE 10-24-85 M.B.

ALL OK 2-5-90 SS

2 NEW TIES 11-29-10 GR

CERTIFIED CORRECT:

Frederic W. Zietlow
 Registered Land Surveyor

DATE: FEBRUARY 25, 1976

TIE SKETCH

(Show at least four ties)

ALL TIES P.K. NAIL WITH SHINER BLAZES 5'± ABOVE GROUND, FENCE LINES ARE NEW, INSCRIBED "B.T."

