

Section 31 Town 17 Range 5

County Corner No. 115

Romportol ID 417053012000

# ADAMS COUNTY

## PUBLIC LAND SURVEY MONUMENT RECORD

Type of Monument Berntsen Survey Nail

Adams County Coordinates (NAD 83, 2007)

Northing 194663.635

Easting 499405.599

		31	X

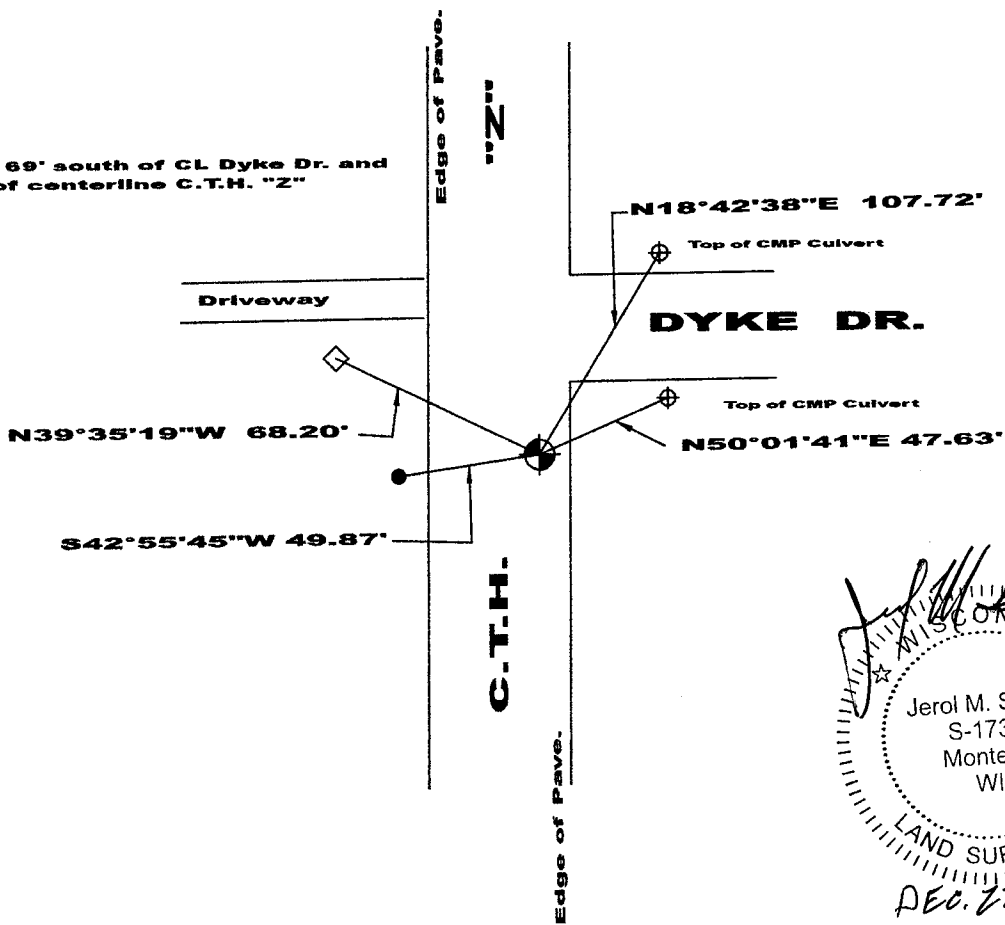
### Corner History and Basis for Location

1975 - PLS 606 set Harrison monument and ties.

2019 - PLS 2675 found and excepted Harrison mon. and 2 ties and set 2 new ties.

2022 - PLS 1739 set Berntsen Survey Nail in previously established position of Harrison monument destroyed by road construction. Set 3 new ties and 1 found and measured all.

Corner is 69' south of CL Dyke Dr. and 10' East of centerline C.T.H. "2"



*Jerol M. Smart*  
 WISCONSIN  
 Jerol M. Smart  
 S-1739  
 Montello  
 WI  
 LAND SURVEYOR  
 DEC. 22, 2022

- Set Bernsten Survey Nail
- Set 3/4"x 24" rebar
- Found broken conc. Ref. Mon.
- Set cross cut in top of CMP Culvert

I, Jerol M. Smart, P.L.S., Adams County Surveyor, do hereby certify that the information shown hereon is correct and that I have fully complied with Wisconsin Statutes and Admin. code to the best of my knowledge and belief.

31 SECTION 17 TOWN 05 RANGE

# ADAMS COUNTY

COUNTY CORNER NO: 115  
 ROMPORTOL ID: 41705312000

## PUBLIC LAND SURVEY MONUMENT RECORD

TYPE OF MONUMENT: HARRISON  
 ADAMS COUNTY COORDINATES, NAD 83 (2007)

N. 194663.635

E. 499405.599

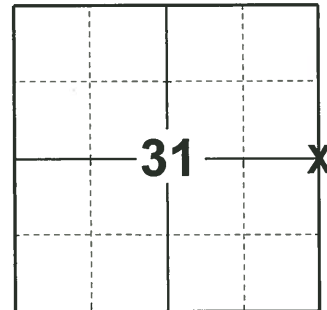
ELEVATION-      DATUM     

FIELD WORK DATE: 02/19/2019

### BASIS FOR MONUMENT LOCATION

1976 - PLS-606 E.D.M TRAVERSE. THIS CORNER WAS SET BY EXTENDING THE LINE FROM THE NW CORNER THROUGH THE PK NAIL REFERENCED AS THE CORNER AND DOUBLING THE WEST LINE DISTANCE OF HOLIDAY HEIGHTS SUBDIVISION AND EXTENDING A LINE FROM THE E1/4 CORNER THROUGH SAID POINT TO THE INTERSECTION AT THE W1/4 CORNER. 2" REF. PIPE PUT CORNER AT P.K. SHOWN. A.B.K. (COUNTY SURVEYOR) DUG BACKHOE AT HIS (P.K.) LOCATION AND FOUND NOTHING. DID NOT DIG AT HARRISON LOCATION. MEASUREMENTS INDICATED LOCATION OK. DID NOT ACCEPT P.K. LOCATION. A.B.K. COUNTY SURVEYOR.

2019 - PLS-2675 FOUND HARRISON MONUMENT 4" BELOW THE ROAD SURFACE, 2 TIES, AND 1 WITNESS. THE MONUMENT AGREES WITH BOTH TIES AND WITNESS. ACCEPTED THE HARRISON MONUMENT AS THE CORNER. SET 1 NEW TIE. MEASURED TO A FOUND RIGHT-OF-WAY IRON, EXISTING TIES, AND WITNESS.



### LOCATION

(INDICATE CORNER BY "X")

SEAL:



DATA SHOWN HERE ON THIS TIE SHEET IS CORRECT AND COMPLETE TO THE BEST OF MY KNOWLEDGE AND BELIEF.

PROFESSIONAL LAND SURVEYOR

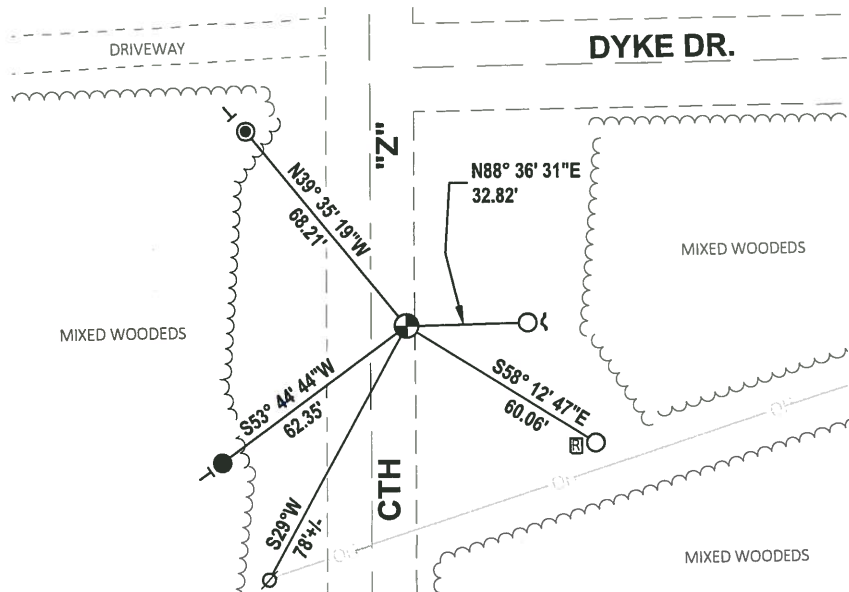
DATE 3/12/19

### - TIE SKETCH

NOTE: THE CORNER LANDS 10'± EAST OF THE CENTERLINE OF CTH "Z" AND 69'± SOUTH OF CENTERLINE OF DYKE DR .



- SET 3/4" x 18" IRON REBAR, 1.50#/FT
- FOUND 3/4" IRON ROD
- ⊙ FOUND REF. MONUMENT
- ⊕ FOUND HARRISON MONUMENT
- ⊗ WITNESS POWER POLE
- ~ STEEL FENCE POST
- VINYL "T" POST
- ⊞ RIGHT-OF-WAY GUARD POST



**ADAMS COUNTY**

**Survey Monument Record**

TYPE OF MONUMENT: HARRISON

STATE PLANE COORDINATES: N \_\_\_\_\_

E \_\_\_\_\_

ELEVATION — M.S.L. DATUM: \_\_\_\_\_

THETA ANGLE: \_\_\_\_\_

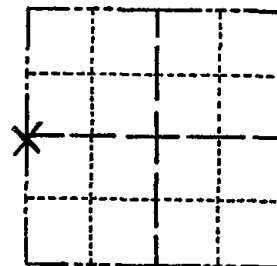
FIELD BOOK: \_\_\_\_\_ PAGE \_\_\_\_\_

CORNER NO. 1011 (115)

SECTION Sec. 32

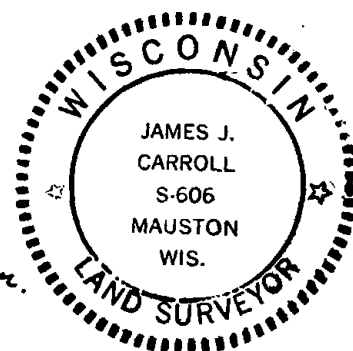
TOWN T17N

RANGE R5E



LOCATION  
(Indicated by 'X')

SEAL:



**BASIS FOR MONUMENT LOCATION**

(Use reverse side if necessary)

Show info such as: History of corner, with reference to Vol. and pg. dates, surveyor; exact description of monument replaced; if location computed, by taped or EDM traverse; landowner remarks, etc.

**E.D.M. Traverse**

This corner was set by extending the line from the NW corner through the PK nail referenced as the corner and doubling the west line distance of Holiday Heights Subdivision and extending a line from the E $\frac{1}{4}$  corner through said point to the intersection at the W $\frac{1}{4}$  corner.

2" Ref pipe put corner at P.K. shown.  
A PK dug/backhoe at this (P.K.) location - found nothing. Did not dig at Harrison location - measurements indicate location OK. Did not accept PK location.

CERTIFIED CORRECT.

*James J. Carroll*  
Registered Land Surveyor

DATE: Aug. 23, 1976

OK 5128185 OK

A.B.H.  
Co. Surveyor

**TIE SKETCH**

OK 2-5-98 K2-SS  
ALL OK 8-24-94-56-SS

(Show at least four ties)

