

33
SECTION

17
TOWN

05
RANGE

ADAMS COUNTY

COUNTY CORNER NO: 117
ROMPORTOL ID: 41705332000

PUBLIC LAND SURVEY MONUMENT RECORD

TYPE OF MONUMENT: HARRISON
ADAMS COUNTY COORDINATES, NAD 83 (2007)

N. 194801.432

E. 509996.046

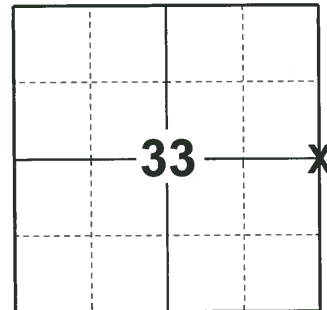
ELEVATION- _____ DATUM _____

FIELD WORK DATE: 01/31/2019

BASIS FOR MONUMENT LOCATION

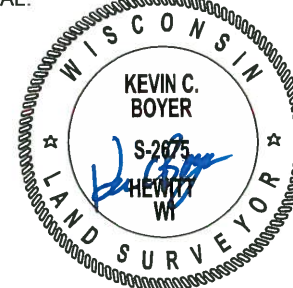
1975 - PLS-1191 CORNER ESTABLISHED WITH DISTANCES AND BEARING'S FROM THE PLAT OF PINEORAMA. CORNER NOT MONUMENT. BOUNDARY SURVEYED BY ROBERT KLEIN, LOTS SURVEYED BY FIRM PERRY & CARRINGTON. ALL DISTANCES TAPED AND VERIFIED.

2019 - PLS-2675 FOUND HARRISON MONUMENT FLUSH WITH THE GROUND. 2 TIES AND 2 WITNESS TREE. THE MONUMENT AGREES WITH ALL THE TIES AND WITNESS TREES. ACCEPTED THE HARRISON MONUMENT AS THE CORNER. SET 3 NEW TIES AND MEASURED TO THE EXISTING TIES AND WITNESS TREES.



LOCATION
(INDICATE CORNER BY "X")

SEAL:



DATA SHOWN HERE ON THIS TIE SHEET IS CORRECT AND COMPLETE TO THE BEST OF MY KNOWLEDGE AND BELIEF.

PROFESSIONAL LAND SURVEYOR

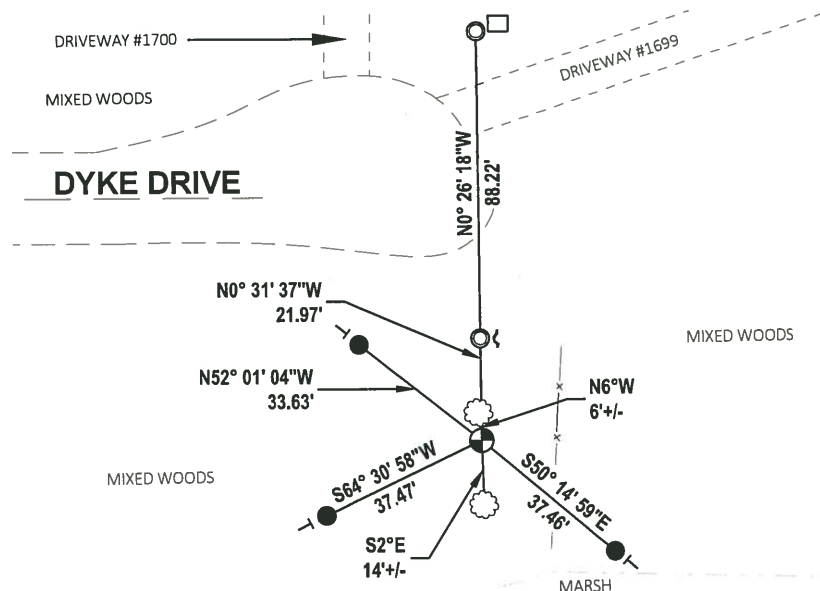
DATE 3/12/19

TIE SKETCH

NOTE: THE CORNER LANDS 67'± SOUTH OF DRIVEWAY #1699



- SET 3/4" x 18" IRON REBAR, 1.50#/FT
- FOUND 1-1/4" O.D. IRON PIPE
- ⊙ FOUND HARRISON MONUMENT
- 1" ALUM. SQ. TUBE UP 2'
- ↖ STEEL FENCE POST
- VINYL "T" POST
- ☼ WITNESS TREE



ADAMS COUNTY

Survey Monument Record

Set. Harrison 5-7-75

TYPE OF MONUMENT: 2" x 30" PIPE

STATE PLANE COORDINATES: N _____

E _____

ELEVATION — M.S.L. DATUM: _____

THETA ANGLE: _____

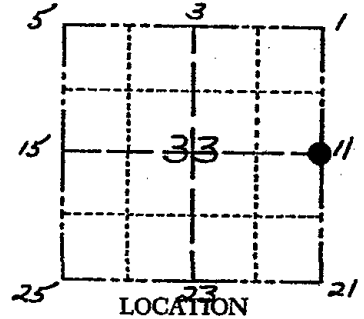
FIELD BOOK: 454 PAGE 71

CORNER NO. 606

SECTION 33

TOWN 17 N

RANGE 5 E



SEAL:



BASIS FOR MONUMENT LOCATION

(Use reverse side if necessary)

Show info such as: History of corner, with reference to Vol. and pg. dates, surveyor; exact description of monument replaced; if location computed, by taped or EDM traverse; landowner remarks, etc.

Corner Established with distances & Brg's
 From the Plat of PINGRAM
 Corner Not Monumented
 Boundary Surveyed by Robert Klein
 Lots Surveyed by FIRM PERRY & CARRINGTON
 All distances Taped & Verified

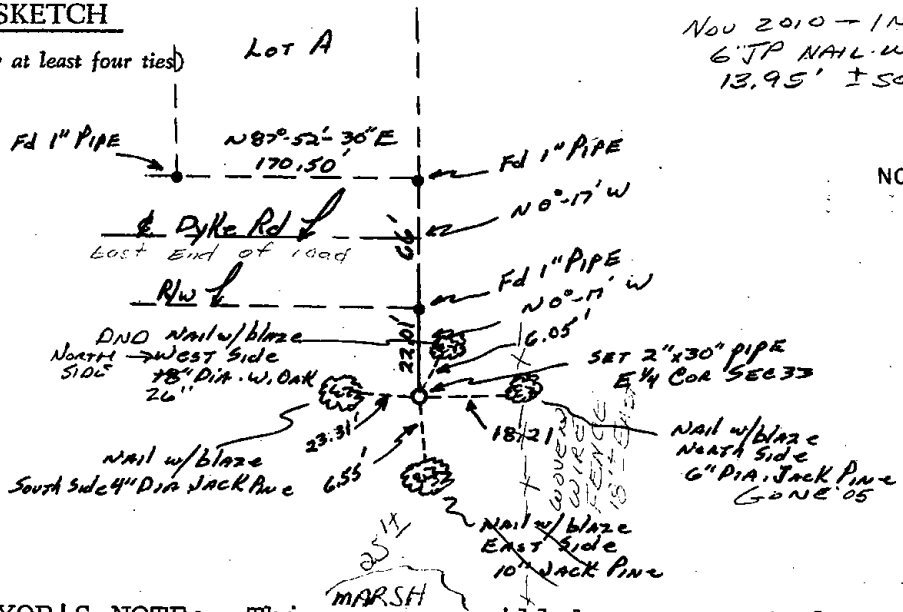
- 1-GONE, OK 2-14-05 DA/JS
- OK 3-14-00 SS
- Harrison O.K. 10/30/75 D.M. C.S.
- " OK 4/8/80 BS-SS
- " OK 5/28/85 D.K.
- " OK 1-30-90 KZ-SS
- " OK 1-11-95 JG-SS

CERTIFIED CORRECT:

Allen Rohde
 Registered Land Surveyor
 DATE: 1-6-75

TIE SKETCH

(Show at least four ties)



Nov 2010 - 1 NEW TIE
 6" JP NAIL WEST SIDE
 13.95' ± SOUTH

NO SCALE



SURVEYOR'S NOTE: This corner will be monumented with a Harrison Marker in the Spring of 1975.