

Section 31 Town 17 Range 5

County Corner No. 123

Romportol ID 41705310000

ADAMS COUNTY

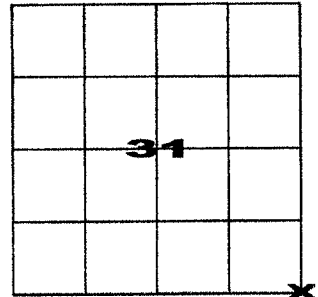
PUBLIC LAND SURVEY MONUMENT RECORD

Type of Monument 3/4" x 24" Rebar

Adams County Coordinates (NAD 83, 2011)

Northing 192012.755

Easting 499397.744

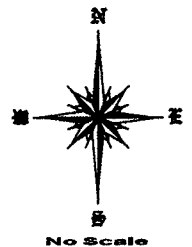
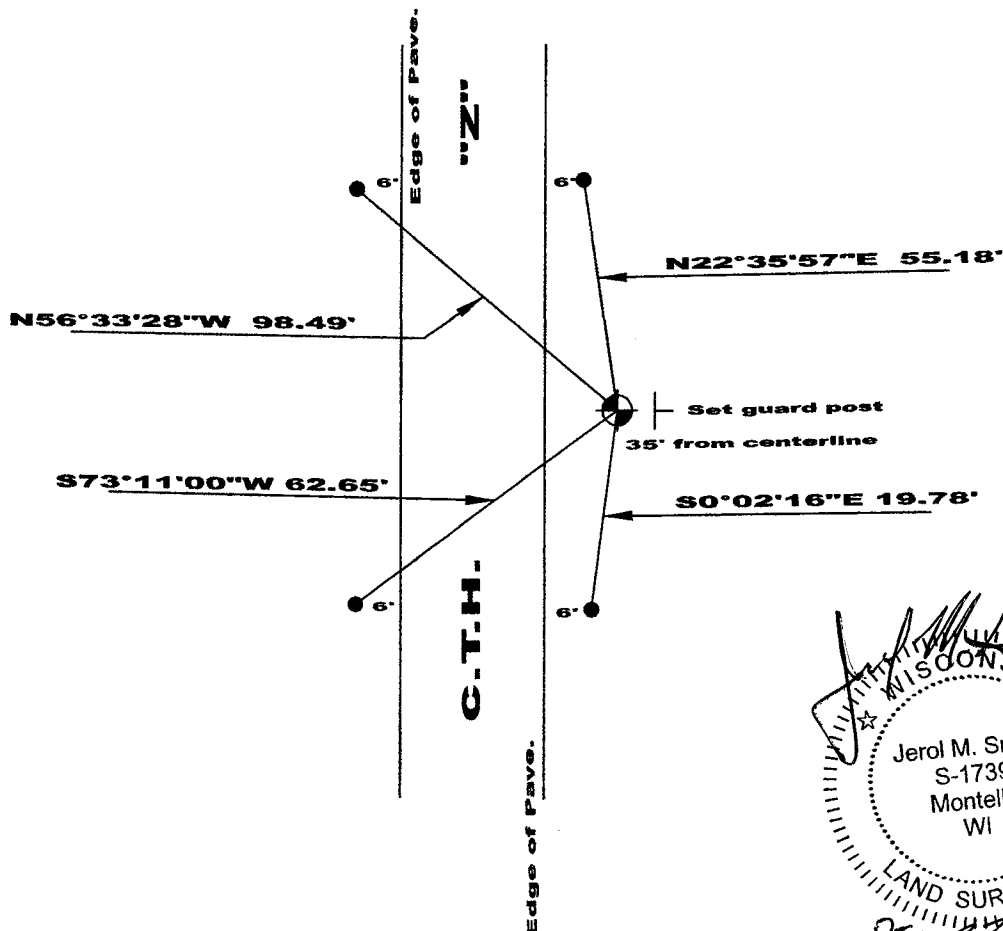


Corner History and Basis for Location

1981 - PLS 1444 set Harrison monument and ties.

2017 - PLS 2994 found and excepted Harrison monument and set four new ties,

2022 - PLS 1739 found Harrison mon. and ties destroyed by highway construction. Set 3/4" x 24" rebar at coordinates previously established for monument and set four new ties.



Jerol M. Smart
 WISCONSIN
 Jerol M. Smart
 S-1739
 Montello
 WI
 LAND SURVEYOR
 Dec. 22, 2022

- Set 3/4" x 24" Rebar
- Set 3/4" x 24" rebar

I, Jerol M. Smart, P.L.S., Adams County Surveyor, do hereby certify that the information shown hereon is correct and that I have fully complied with Wisconsin Statutes and Admin. code to the best of my knowledge and belief.