

32
SECTION

17
TOWN

05
RANGE

ADAMS COUNTY

COUNTY CORNER NO: 125

ROMPORTOL ID: 41705320000

PUBLIC LAND SURVEY MONUMENT RECORD

TYPE OF MONUMENT: HARRISON (BROKEN-TOP)
ADAMS COUNTY COORDINATES, NAD 83 (2007)

N. 192164.479

E. 504669.557

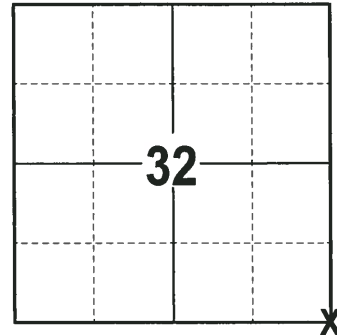
ELEVATION- DATUM

FIELD WORK DATE: 01/03/2018

BASIS FOR MONUMENT LOCATION

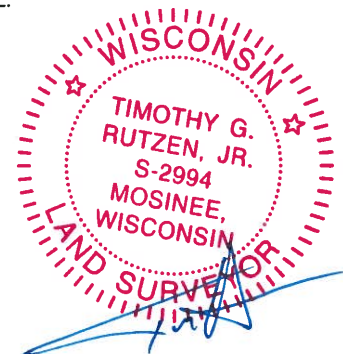
1977 - PLS 878 CALCULATED LOCATION OF CORNER BY RETRACEMENT OF A SURVEY BY PERRY-CARRINGTON CORP. FOR PINEORAMA. SET A 30" HARRISON MONUMENT AT THE CORNER LOCATION AND TIED OUT.

2017 - PLS 2994 FOUND A HARRISON MONUMENT WITH A BROKEN-TOP 12" BELOW THE GROUND SURFACE AND 2 PROPERTY IRONS. ALL OF THE TIES OR WITNESSES HAVE BEEN DESTROYED DUE TO RECENT R/W CLEARING AND DITCHING. ACCEPTED THE HARRISON MONUMENT WITH A BROKEN-TOP AS THE BEST EVIDENCE OF THE CORNER LOCATION. SET 3 NEW TIES AND MEASURED TO THE TIES AND PROPERTY IRONS.



LOCATION
(INDICATE CORNER BY "X")

SEAL:



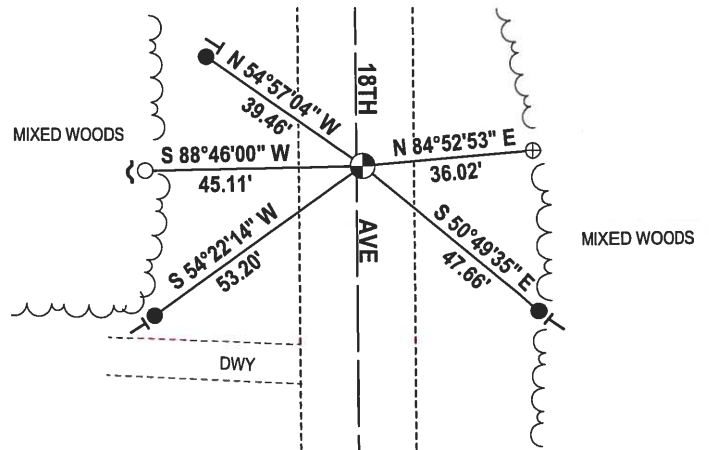
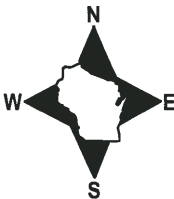
DATA SHOWN HERE ON THIS TIE SHEET IS CORRECT AND COMPLETE TO THE BEST OF MY KNOWLEDGE AND BELIEF.

PROFESSIONAL LAND SURVEYOR

DATE 2-2-18

- TIE SKETCH

NOTE: THE CORNER FALLS 1½ EAST OF THE CENTERLINE OF 18TH AVE.



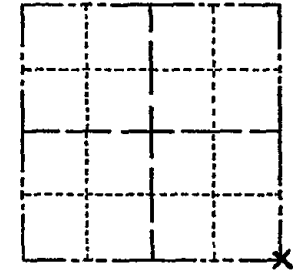
- 3/4" x 18" IRON REBAR SET, 1.50#/FT
- 3/4" IRON ROD FOUND
- ⊕ 1-1/2" O.D. IRON PIPE FOUND
- ⊗ HARRISON (BROKEN-TOP) FOUND
- ✓ STEEL FENCE POST
- VINYL "T" POST

ADAMS COUNTY

Survey Monument Record

TYPE OF MONUMENT: 30" HARRISON
STATE PLANE COORDINATES: N
E
ELEVATION - M.S.L. DATUM:
THETA ANGLE:
FIELD BOOK: 106 PAGE ?

CORNER NO. 201
SECTION 32
TOWN 17
RANGE 5



LOCATION (Indicated by 'X')

SEAL:



BASIS FOR MONUMENT LOCATION

(Use reverse side if necessary)
Show info such as: History of corner, with reference to Vol. and pg. dates, surveyor; exact description of monument replaced; if location computed, by taped or EDM traverse; landowner remarks, etc.

Set bym retracement of survey by Perry-Carrington Corp. for Pineorama.

Harrison O.K. - remeasured ties 10-30-75
Appears more east than called for D.M. - S.S.

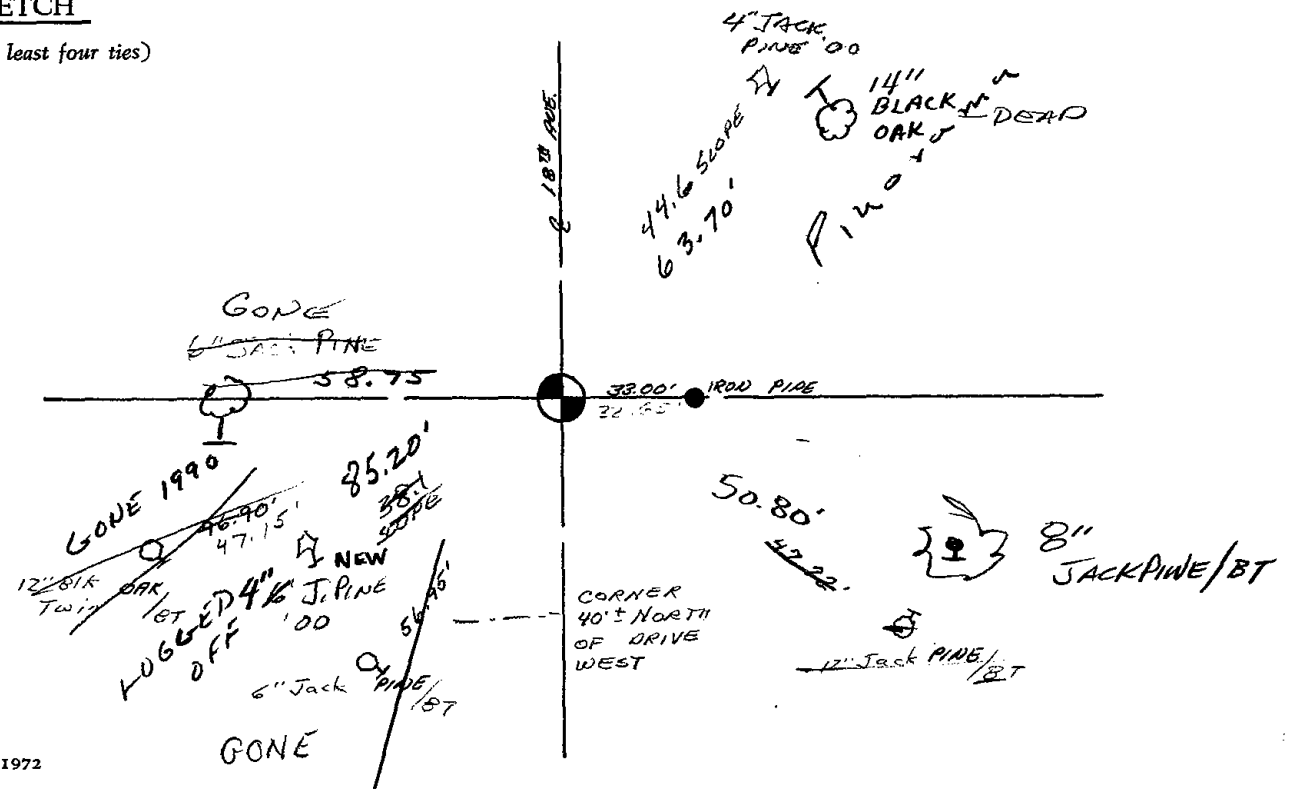
COR OK 4/8/80 BS-SS
ALL OK 5/23/85 A.K.
2-NEW 9-5-90 SS-JG
ALL OK 8-24-94 SS-SS
1 GONE - 2 NEW 2-14-00 SS
2- GONE 2-NEW TOP BROKEN OFF, 2-14-05 JG-DA
OK NOV 2010 SS

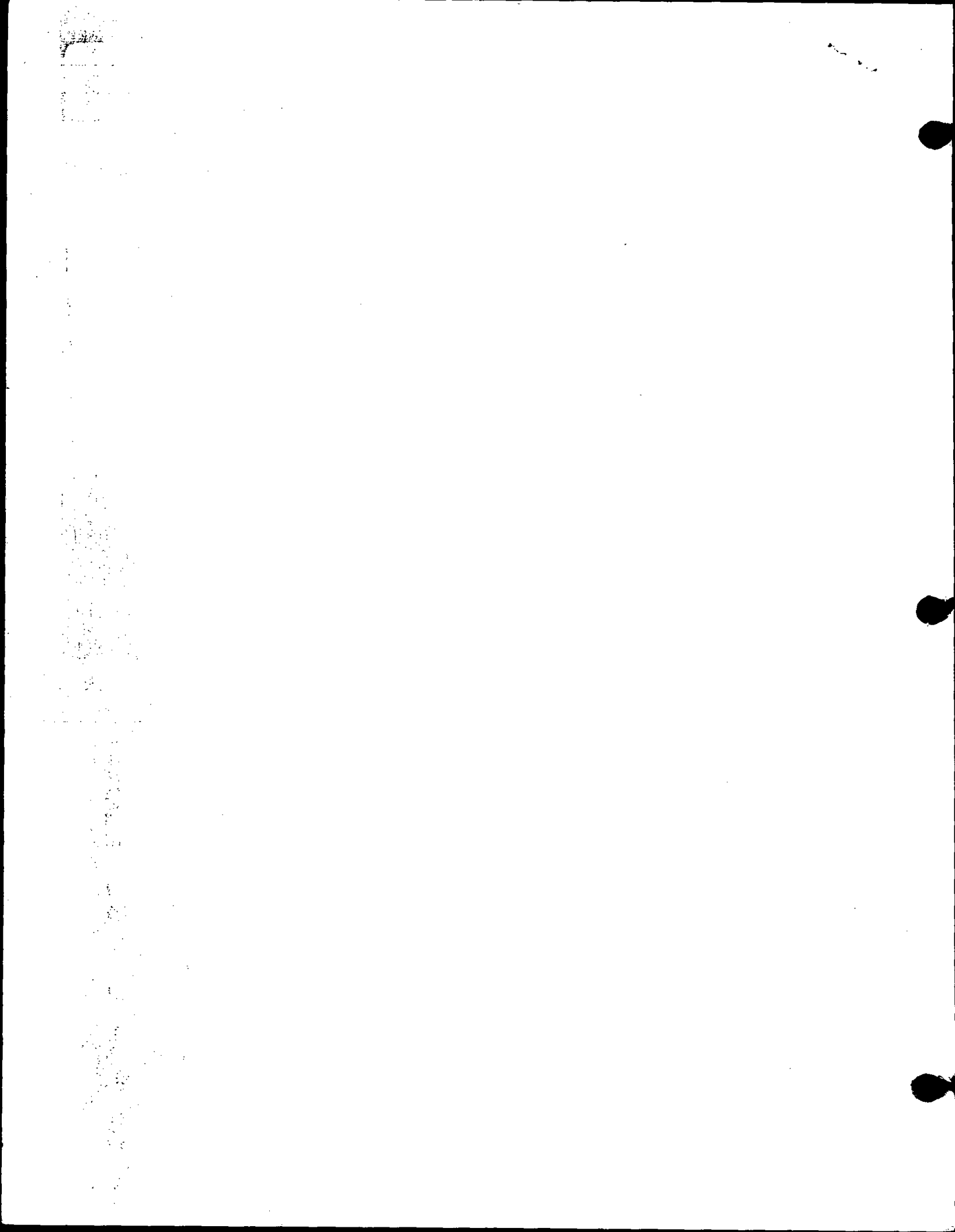
CERTIFIED CORRECT:

Signature of Anthony B. Kiedrowski
Registered Land Surveyor
DATE: 2-22-77

TIE SKETCH

(Show at least four ties)





ADAMS COUNTY

Survey Monument Record

TYPE OF MONUMENT: 30" IRON PIN

STATE PLANE COORDINATES: N _____

ELEVATION — M.S.L. DATUM: _____

THETA ANGLE: _____

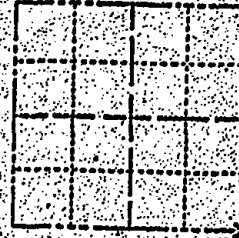
FIELD BOOK: 106 PAGE 2

CORNER NO. 201

SECTION 32

TOWN 17

RANGE 5



BASIS FOR MONUMENT LOCATION

(Use reverse side if necessary)

Show info such as: History of corner, with reference to Vol. and pg. dates; surveyor; exact description of monument replaced; if location computed, by taped or EDM traverse; landowner remarks, etc.

SEAL:

LOCATION
(Indicated by 'X')

Set by retriacement of survey by Perry-Carwington Corp. for Pineorama.



Handwritten notes:
18.23-15
D. 11-55
COR. ON 4/3/80 23-55

Top Broken off

May 87 Ken Carlson

CERTIFIED CORRECT:

Anthony B. Kiedrowski
Registered Land Surveyor

DATE: 7-27-77

THE SKETCH

(Show at least four ties)

