

35
SECTION

17
TOWN

05
RANGE

ADAMS COUNTY

COUNTY CORNER NO: 130

ROMPORTOL ID: 41705350020

PUBLIC LAND SURVEY MONUMENT RECORD

TYPE OF MONUMENT: HARRISON
ADAMS COUNTY COORDINATES, NAD 83 (2007)

N. 192270.073

E. 517896.291

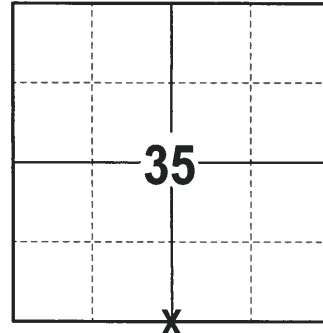
ELEVATION- DATUM

FIELD WORK DATE: 01/04/2018

BASIS FOR MONUMENT LOCATION

1976 - PLS 922 CHECKED COUNTY SURVEY RECORDS FOR RESURVEYS AND NONE WERE ON FILE. THIS CORNER WAS SET EQUA DISTANT ON A LINE BETWEEN THE SW AND THE SE CORNERS (SINGLE PROPORTION METHOD, VIA E.D.M. TRAVERSE OF SECTION 35). SET A 30" HARRISON MONUMENT AT THE CORNER LOCATION AND TIED OUT.

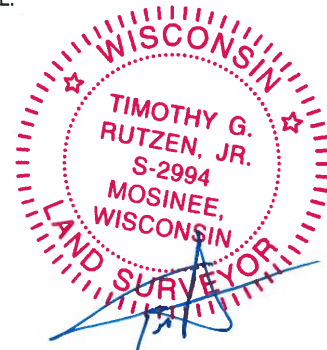
2017 - PLS 2994 FOUND A HARRISON MONUMENT FLUSH WITH THE GROUND SURFACE AND 2 WITNESS TREES. THE MONUMENT AGREES WITH THE EXISTING WITNESS TREES. ACCEPTED THE HARRISON MONUMENT AS THE CORNER LOCATION. SET 4 NEW TIES AND MEASURED TO THE TIES AND WITNESS TREES.



LOCATION

(INDICATE CORNER BY "X")

SEAL:

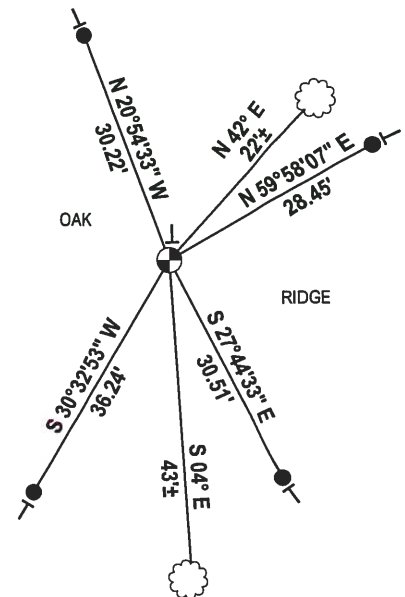
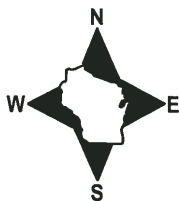


DATA SHOWN HERE ON THIS TIE SHEET IS CORRECT AND COMPLETE TO THE BEST OF MY KNOWLEDGE AND BELIEF.

PROFESSIONAL LAND SURVEYOR

DATE 2-2-18

- TIE SKETCH -



- 3/4" x 18" IRON REBAR SET, 1.50#/FT
- ⊕ HARRISON FOUND
- VINYL "T" POST
- ☁ WITNESS TREE FOUND

ADAMS COUNTY

Survey Monument Record

CORNER NO. 875
 SECTION 35
 TOWN 17 N.
 RANGE 5 E

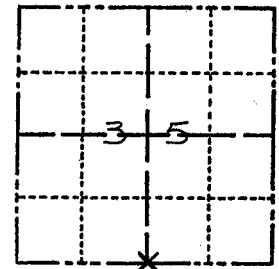
TYPE OF MONUMENT: 30" HARRISON MONUMENT

STATE PLANE COORDINATES: N 43° 53' 38.6"
 HAND HELD GPS E 89° 52' 03.7"

ELEVATION — M.S.L. DATUM: _____

THETA ANGLE: _____

FIELD BOOK: _____ PAGE _____



LOCATION (Indicated by 'X')

BASIS FOR MONUMENT LOCATION

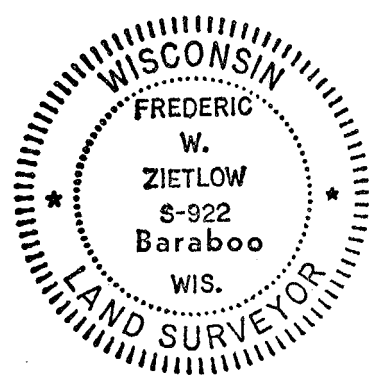
(Use reverse side if necessary)

Show info such as: History of corner, with reference to Vol. and pg, dates, surveyor; exact description of monument replaced; if location computed, by taped or EDM traverse; landowner remarks, etc.

CHECKED COUNTY SURVEY RECORDS FOR RESURVEYS AND NONE WERE ON FILE. THIS CORNER WAS SET EQUA DISTANT ON LINE BETWEEN THE SW & SE CORNERS (SINGLE PROPORTION METHOD VIA E.D.M. TRAVERSE OF SECTION 35)

- MON/TIES OK RN-JH 11/29/81
- " " 11-7-85 GR-SS
- ALL OK 10-4-90 JG-SS
- " " 6-06-95 GR
- " " 1-9-06, JG-SS
- 1 NEW TIE 12-06-10 SS

SEAL:



CERTIFIED CORRECT:
Frederic W. Zietlow
 Registered Land Surveyor
 DATE: FEBRUARY 25, 1976

TIE SKETCH

(Show at least four ties)

ALL TIES P.K. NAIL WITH SHINER, BLAZE INSCRIBED "B.T."

WALK NORTH FROM P.P. # 2015
500± NORTH

