

33 SECTION 18 TOWN 06 RANGE

ADAMS COUNTY

COUNTY CORNER NO: 127
ROMPORTOL ID: 41806330000

PUBLIC LAND SURVEY MONUMENT RECORD

TYPE OF MONUMENT: HARRISON (BROKEN-TOP)
ADAMS COUNTY COORDINATES, NAD 83 (2007)

N. 224329.901

E. 541494.873

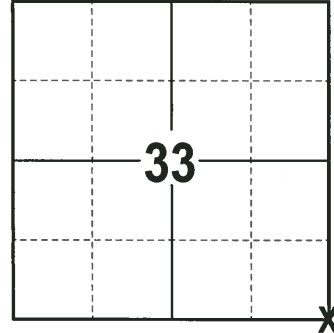
ELEVATION- DATUM

FIELD WORK DATE: 01/08/2018

BASIS FOR MONUMENT LOCATION

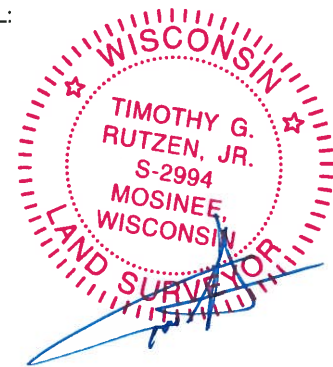
1972 - PLS 878 LOCATION DETERMINED FROM A RETRACEMENT OF A PERRY-CARRINGTON SURVEY. SET A 30" HARRISON MONUMENT AND TIED OUT.

2017 - PLS 2994 FOUND A HARRISON MONUMENT WITH A BROKEN-TOP 8" BELOW THE ROAD SURFACE AND 1 TIE. THE MONUMENT AGREES WITH THE EXISTING TIE. ACCEPTED THE HARRISON MONUMENT WITH A BROKEN-TOP AS THE CORNER LOCATION. SET 3 NEW TIES AND MEASURED TO THE TIES.



LOCATION
(INDICATE CORNER BY "X")

SEAL:



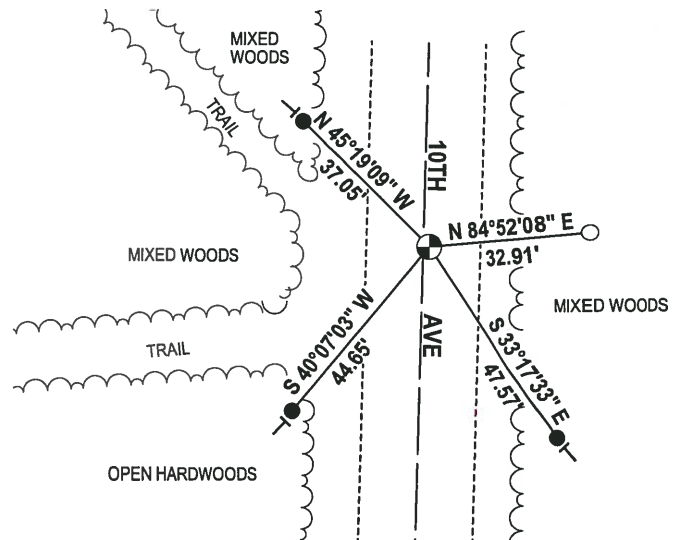
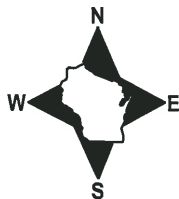
DATA SHOWN HERE ON THIS TIE SHEET IS CORRECT AND COMPLETE TO THE BEST OF MY KNOWLEDGE AND BELIEF.

PROFESSIONAL LAND SURVEYOR

DATE 2-2-18

- TIE SKETCH -

NOTE: THE CORNER FALLS 1½ EAST OF THE CENTERLINE OF 10TH AVE.



- 3/4" x 18" IRON REBAR SET, 1.50#/FT
- 1-1/2" O.D. IRON PIPE FOUND
- ⊕ HARRISON (BROKEN-TOP) FOUND
- VINYL "T" POST

ADAMS COUNTY

Survey Monument Record

TYPE OF MONUMENT: 30" HARRISON

STATE PLANE COORDINATES: N _____ E _____

ELEVATION — M.S.L. DATUM: _____

THETA ANGLE: _____

FIELD BOOK: 106? PAGE ?

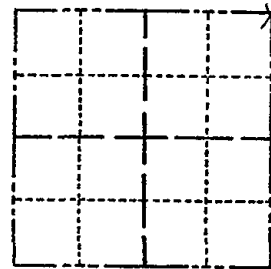
CORNER NO. 197

SECTION 4

TOWN 17

RANGE 6

7



LOCATION (Indicated by 'X')

SEAL:



BASIS FOR MONUMENT LOCATION

(Use reverse side if necessary)

Show info such as: History of corner, with reference to Vol. and pg, dates, surveyor; exact description of monument replaced; if location computed, by taped or EDM traverse; landowner remarks, etc.

Set 30" Harrison monument on July 3, 1972.

by Anthony B. Kiedrowski R.L.S. 878

Location determined from a retracement of a Perry-Carrington survey. See file.

Note: F.B. 106 lost.

COR. O.K. 9-20-75 SS
11 1122100 A

ALL OK 7-12-85 SS-DK

ALL OK 2-6-90 LZ-GR

ALL OK 7-27-94 JG-BS

CERTIFIED CORRECT:

Anthony B. Kiedrowski
Registered Land Surveyor

DATE: 1-27-73

TIE SKETCH

ALL OK 1-6-00, JG

ALL OK 1-24-05-JG

(Show at least four ties) 1-21-10 SS

