

PUBLIC LAND SURVEY MONUMENT RECORD

TYPE OF MONUMENT: HARRISON
 ADAMS COUNTY COORDINATES, NAD 83 (2007)

N. 221468.182

E. 530916.489

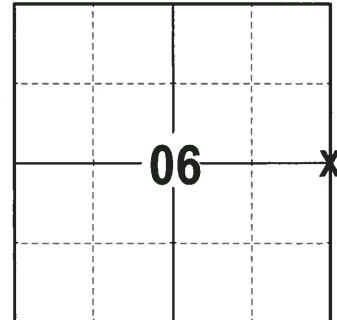
ELEVATION- _____ DATUM _____

FIELD WORK DATE: 06/15/2017

BASIS FOR MONUMENT LOCATION

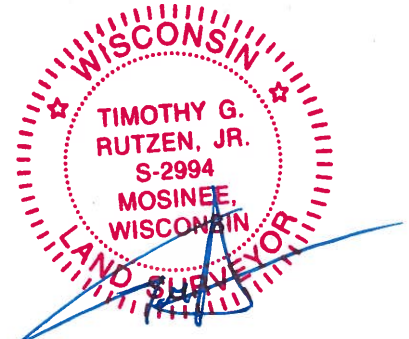
1976- PLS 1103 RAN TRAVERSE ON ADJACENT SECTION CORNERS AND VERIFIED THE LOCATION WITH THE SUBDIVISIONS IN FRIENDSHIP TO THE SOUTH AND WEST. REPLACED EXISTING 1" IRON PIPE WITH HARRISON MONUMENT AND SET 3 WITNESSES.

2017 - PLS 2994 FOUND EXISTING HARRISON MONUMENT 6" BELOW THE SURFACE AND 1 TIE AND 2 WITNESSES. THE MONUMENT AGREES WITH THE EXISTING TIE AND WITNESSES. ACCEPTED HARRISON AS CORNER LOCATION AND SET 4 NEW TIES. RE-MEASURED TO THE TIES AND WITNESSES.



LOCATION
 (INDICATE CORNER BY "X")

SEAL:



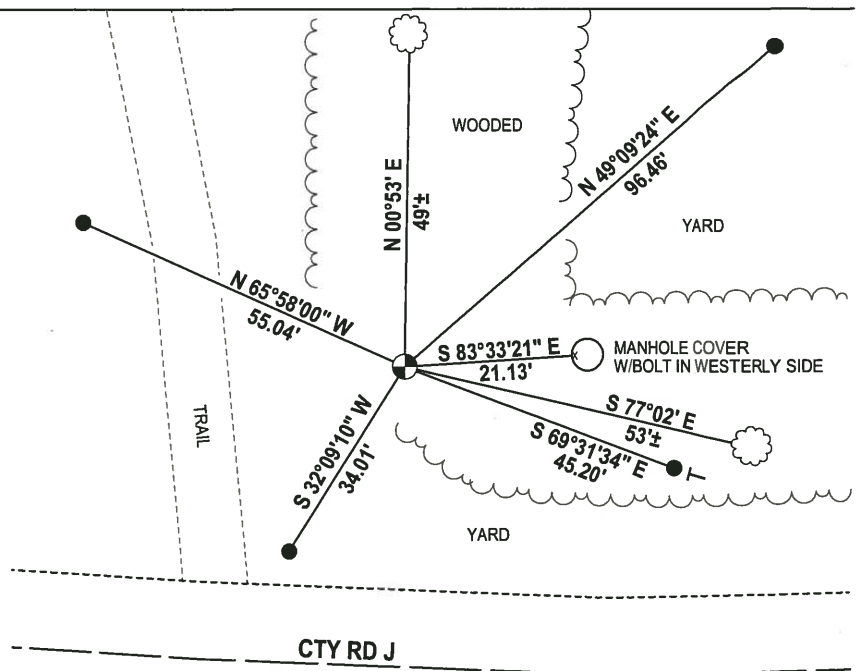
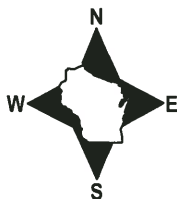
DATA SHOWN HERE ON THIS TIE SHEET IS CORRECT AND COMPLETE TO THE BEST OF MY KNOWLEDGE AND BELIEF.

PROFESSIONAL LAND SURVEYOR

DATE 6/26/17

- TIE SKETCH -

NOTE: THE CORNER FALLS 47± NORTH OF THE CENTERLINE OF CTY RD J.



- 3/4" x 18" IRON REBAR SET, 1.50#/FT
- ⊙ HARRISON FOUND
- ⊥ VINYL "T" POST
- ☼ WITNESS TREE FOUND

ADAMS COUNTY

Survey Monument Record

TYPE OF MONUMENT: Harrison

STATE PLANE COORDINATES: N _____

E _____

ELEVATION — M.S.L. DATUM: _____

THETA ANGLE: _____

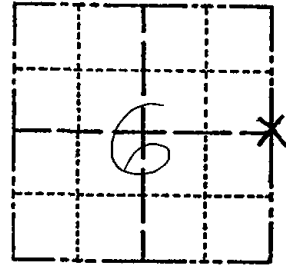
FIELD BOOK: _____ PAGE _____

CORNER NO. 15

SECTION 6

TOWN 17

RANGE 6



LOCATION
(Indicated by 'X')

SEAL:

BASIS FOR MONUMENT LOCATION

(Use reverse side if necessary)

Show info such as: History of corner, with reference to Vol. and pg, dates, surveyor; exact description of monument replaced; if location computed, by taped or EDM traverse; landowner remarks, etc.

Replaced existing 1" Iron Pipe with Harrison Monument after running traverse to adjacent section corners and verifying the location of this corner with subdivisions in Friendship to the South and West.

2 NEW 2-6-90 KZ-GR
ALL OK 7/27/94 JG-BS



OK 1/23/80 RN-SS
NOT BT'D - IN PARK
OK 7-26-85 DK

2-GONE, 2-NEW TIES, 2-10-80, JG-82
1-GONE, 5-LEFT, 1-25-05-JG

CERTIFIED CORRECT:

Dale C. Hagen
Registered Land Surveyor
DATE: 6-1-1976

TIE SKETCH

(Show at least four ties)

NOTE

Ties in trees to nail in disc.

