

04
SECTION

17
TOWN

06
RANGE

ADAMS COUNTY

COUNTY CORNER NO: 17
ROMPORTOL ID: 41706042000

PUBLIC LAND SURVEY MONUMENT RECORD

TYPE OF MONUMENT: HARRISON
ADAMS COUNTY COORDINATES, NAD 83 (2007)

N. 221487.089

E. 541492.077

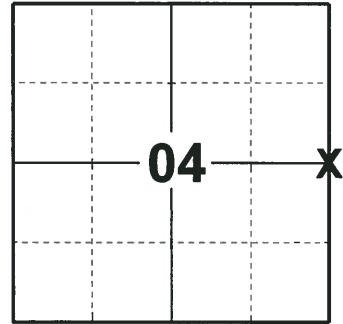
ELEVATION- _____ DATUM _____

FIELD WORK DATE: 08/06/2018

BASIS FOR MONUMENT LOCATION

1973 - PLS 878 CALCULATED THE CORNER POSITION ON A STRAIGHT LINE PROPORTIONATELY BETWEEN SECTION CORNERS. SET A HARRISON AT THE CALCULATED POSITION AND TIED OUT.

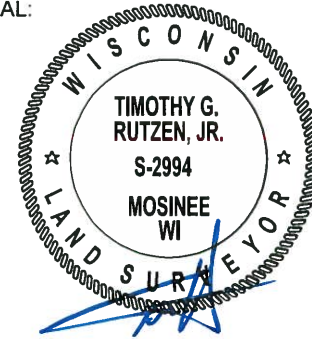
2018 - PLS 2994 FOUND A HARRISON MONUMENT 2" BELOW THE ROAD SURFACE, 1 TIE AND 1 PROPERTY IRON. THE MONUMENT AGREES WITH THE EXISTING TIE. ACCEPTED THE HARRISON MONUMENT AS THE CORNER LOCATION. SET 2 NEW TIES AND MEASURED TO THE TIES AND PROPERTY IRON.



LOCATION

(INDICATE CORNER BY "X")

SEAL:



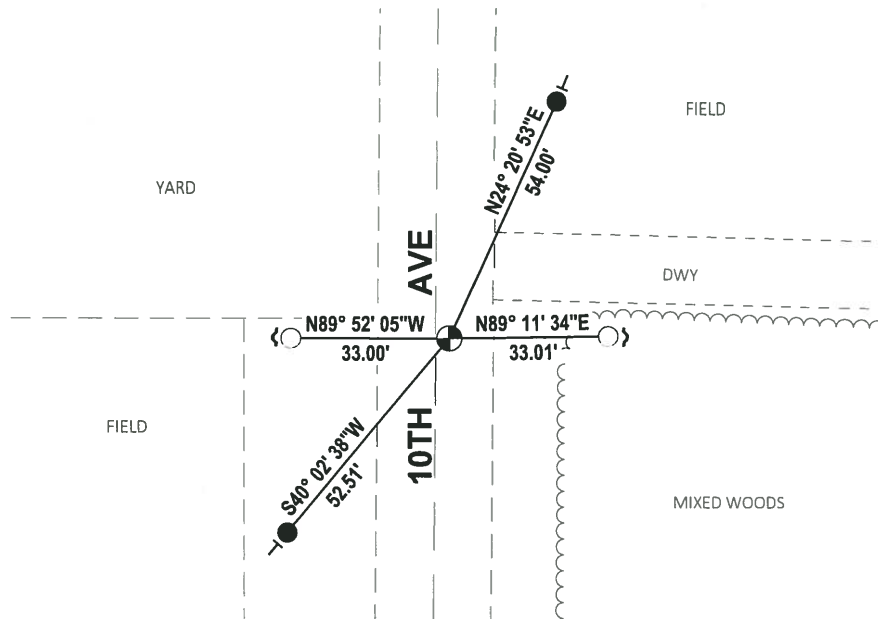
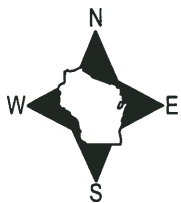
DATA SHOWN HERE ON THIS TIE SHEET IS CORRECT AND COMPLETE TO THE BEST OF MY KNOWLEDGE AND BELIEF.

PROFESSIONAL LAND SURVEYOR

DATE 8-30-18

TIE SKETCH

NOTE: THE CORNER FALLS 3± EAST OF THE CENTERLINE OF 10TH AVE.



- SET 3/4" x 18" IRON REBAR, 1.50#/FT
- FOUND 3/4" IRON ROD
- ⊗ FOUND HARRISON MONUMENT
- ↘ STEEL FENCE POST
- └ VINYL "T" POST

ADAMS COUNTY

Survey Monument Record

TYPE OF MONUMENT: Harrison

STATE PLANE COORDINATES: N _____

E _____

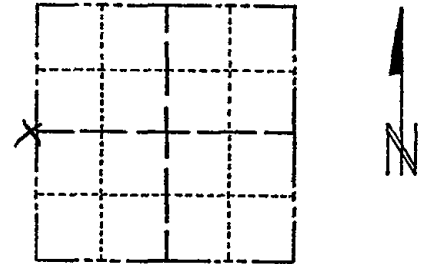
ELEVATION — M.S.L. DATUM: _____

THETA ANGLE: _____

FIELD BOOK: 108 PAGE 127

CORNER NO. 334
SECTION 3
TOWN 17
RANGE 6

17



LOCATION
(Indicated by 'X')

SEAL:



BASIS FOR MONUMENT LOCATION

(Use reverse side if necessary)

Show info such as: History of corner, with reference to Vol. and pg, dates, surveyor; exact description of monument replaced; if location computed, by taped or EDM traverse; landowner remarks, etc.

Set on a straight line proportionately between section corners.

COR O.K. 9-20-75 S.S.
COR BELLS 1/23/80 RA-S.S

See Reverse side for Drawing
1 GONE IN NEW 2-6-90

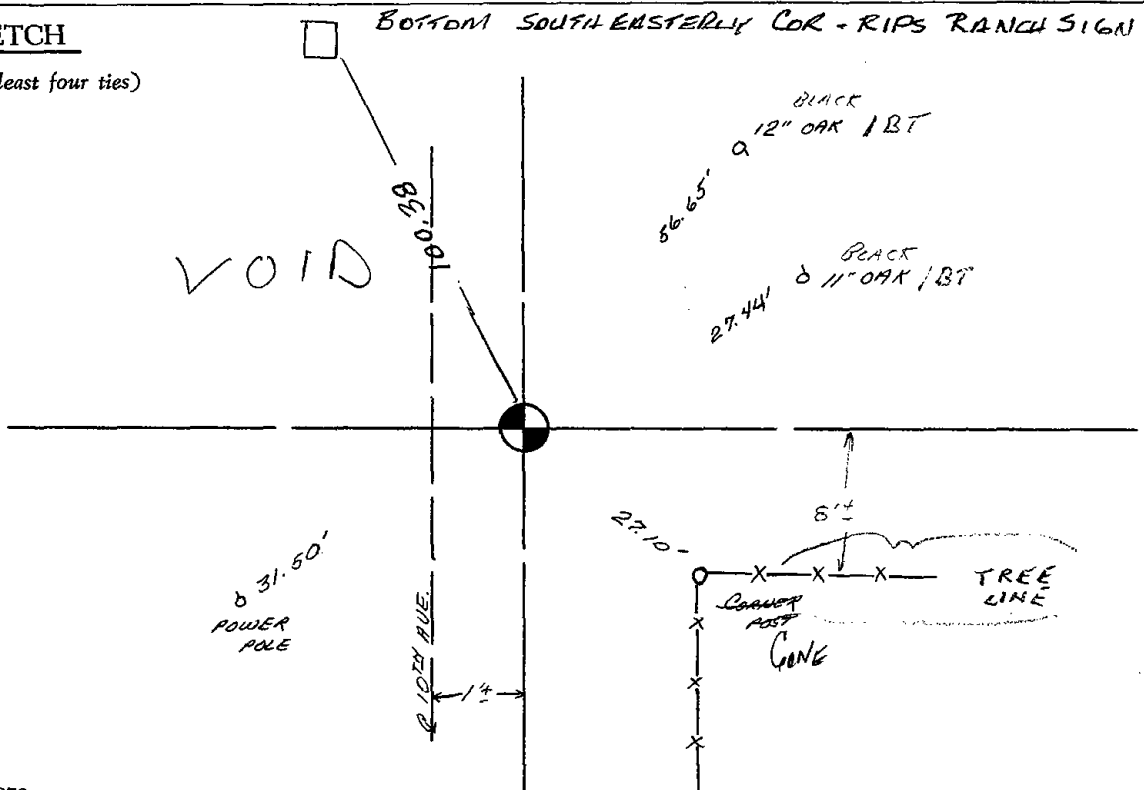
CERTIFIED CORRECT:

Anthony B. Kiedrowski
Registered Land Surveyor

DATE: July 1973

TIE SKETCH

(Show at least four ties)



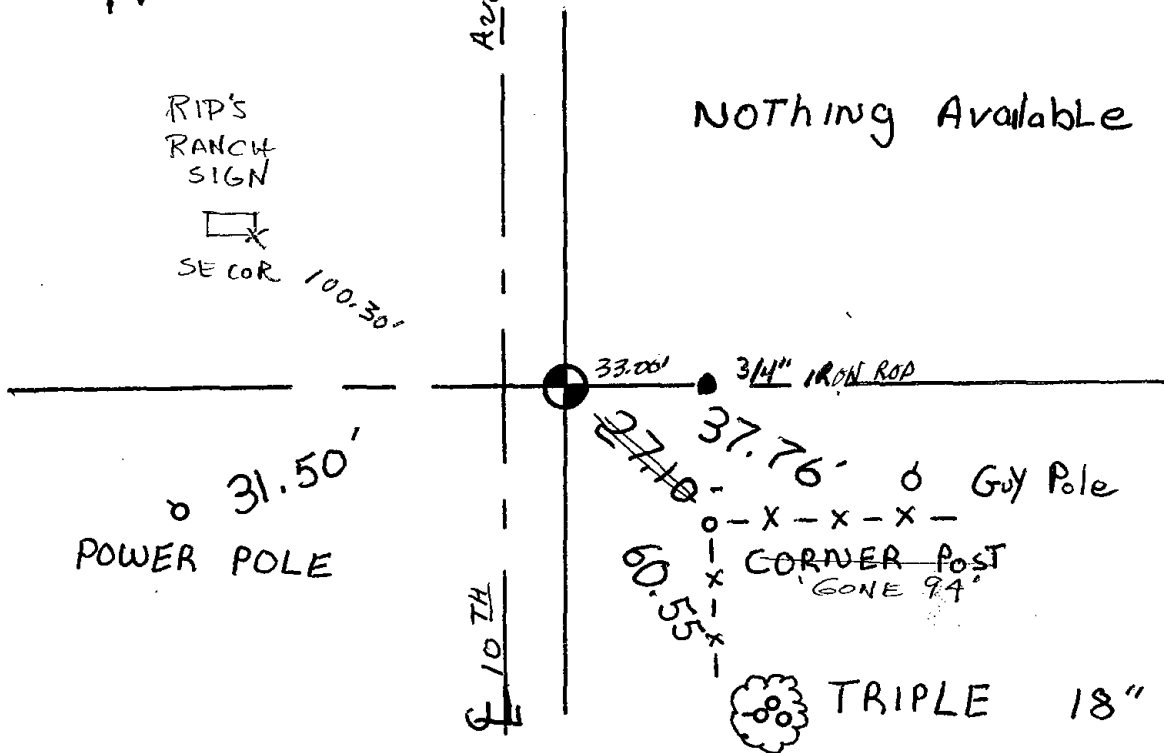


Ave.

RIP'S
RANCH
SIGN

SE COR 100.30'

NOTHING Available



COR OK 7-12-85 DK-SS

1-GONE, 1-NEW 7-27-94 JG-BS

ALL OK, 2-10-00, JG-BZ

1-NEW 1-24-05 JG

OK 1-21-10 'SS