

01 SECTION 17 TOWN 06 RANGE

# ADAMS COUNTY

COUNTY CORNER NO: 20  
ROMPORTOL ID: 41706012000

## PUBLIC LAND SURVEY MONUMENT RECORD

TYPE OF MONUMENT: HARRISON  
ADAMS COUNTY COORDINATES, NAD 83 (2007)

N. 221644.459

E. 557362.151

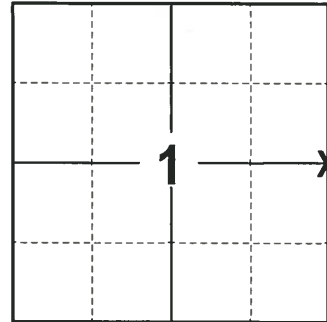
ELEVATION- \_\_\_\_\_ DATUM \_\_\_\_\_

FIELD WORK DATE: 12/05/2017

### BASIS FOR MONUMENT LOCATION

1974 - PLS 878 CALCULATED POINT ESTABLISHED BY TRAVERSING THE ENTIRE SECTION AND TAKING INTO ACCOUNT VARIOUS SURVEYS IN THE AREA. THE PERRY-CARRINGTON SURVEY IN THE SOUTHWEST QUARTER OF THE SECTION APPEARED TO BE THE MOST NEARLY CORRECT. SET A HARRISON MONUMENT AT THE CALCULATED LOCATION AND TIED OUT.

2017 - PLS 2994 FOUND A HARRISON MONUMENT FLUSH WITH THE GROUND SURFACE AND 2 WITNESS TREES. THE MONUMENT AGREES WITH THE EXISTING WITNESS TREES. ACCEPTED THE HARRISON MONUMENT AS THE CORNER LOCATION. SET 4 NEW TIES AND MEASURED TO THE TIES AND WITNESS TREES.



LOCATION  
(INDICATE CORNER BY "X")

SEAL:



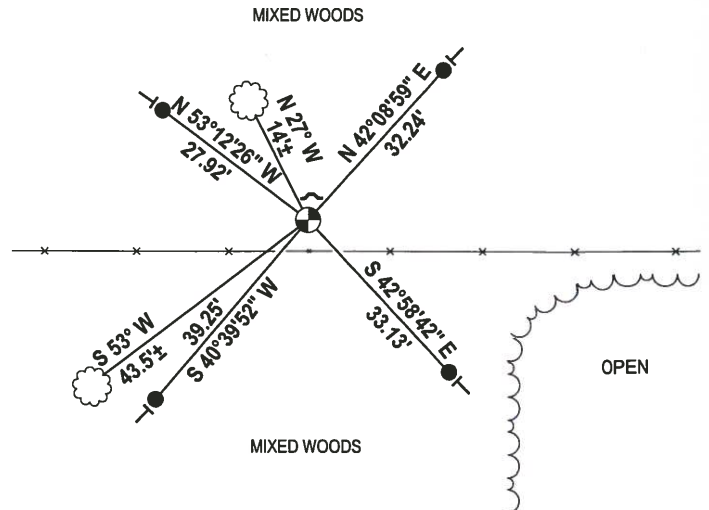
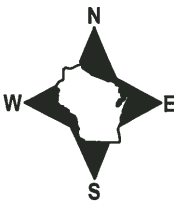
DATA SHOWN HERE ON THIS TIE SHEET IS CORRECT AND COMPLETE TO THE BEST OF MY KNOWLEDGE AND BELIEF.

PROFESSIONAL LAND SURVEYOR

DATE 1-4-18

### - TIE SKETCH

NOTE: THE CORNER FALLS 6± NORTH OF THE FENCE LINE.



- 3/4" x 18" IRON REBAR SET, 1.50#/FT
- ⊙ HARRISON FOUND
- ✓ STEEL FENCE POST
- VINYL "T" POST
- ☁ WITNESS TREE FOUND

ADAMS COUNTY

CORNER NO. 401  
SECTION 1  
TOWN 17  
RANGE 6

Survey Monument Record

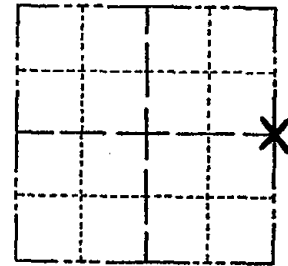
TYPE OF MONUMENT: Harrison Standard

STATE PLANE COORDINATES: N \_\_\_\_\_  
E \_\_\_\_\_

ELEVATION — M.S.L. DATUM: \_\_\_\_\_

THETA ANGLE: \_\_\_\_\_

FIELD BOOK: \_\_\_\_\_ PAGE \_\_\_\_\_



LOCATION  
(Indicated by 'X')

SEAL:

BASIS FOR MONUMENT LOCATION

(Use reverse side if necessary)

Show info such as: History of corner, with reference to Vol. and pg, dates, surveyor; exact description of monument replaced; if location computed, by taped or EDM traverse; landowner remarks, etc.

This point established by traversing entire section and taking into account various surveys in the area. The Perry-Carrington survey in the Southwest Quarter of the section appeared to be the most nearly correct. This point monumented to fit that survey.

CORNER O.K. 9.20.75 SS  
OK 11.23.80 KN-SS  
ALL OK 7-12-85 SS-DK  
ALL OK 1-31-90 KZ-GR

CERTIFIED CORRECT:

*Anthony B. Kedrowski*  
Registered Land Surveyor  
DATE: June 14, 1974

TIE SKETCH

ALL OK 7-29-94 JG-BS Ties to nail and disc.  
1-GONE, 3-14-85 - JG-DA

(Show at least four ties) 1-NEW TIE 2-10-00, JG-BZ  
1 NEW TIE 2-4-10 SS

